



**23/10-14 Warburton Street GYMEA NSW**

2 1 1

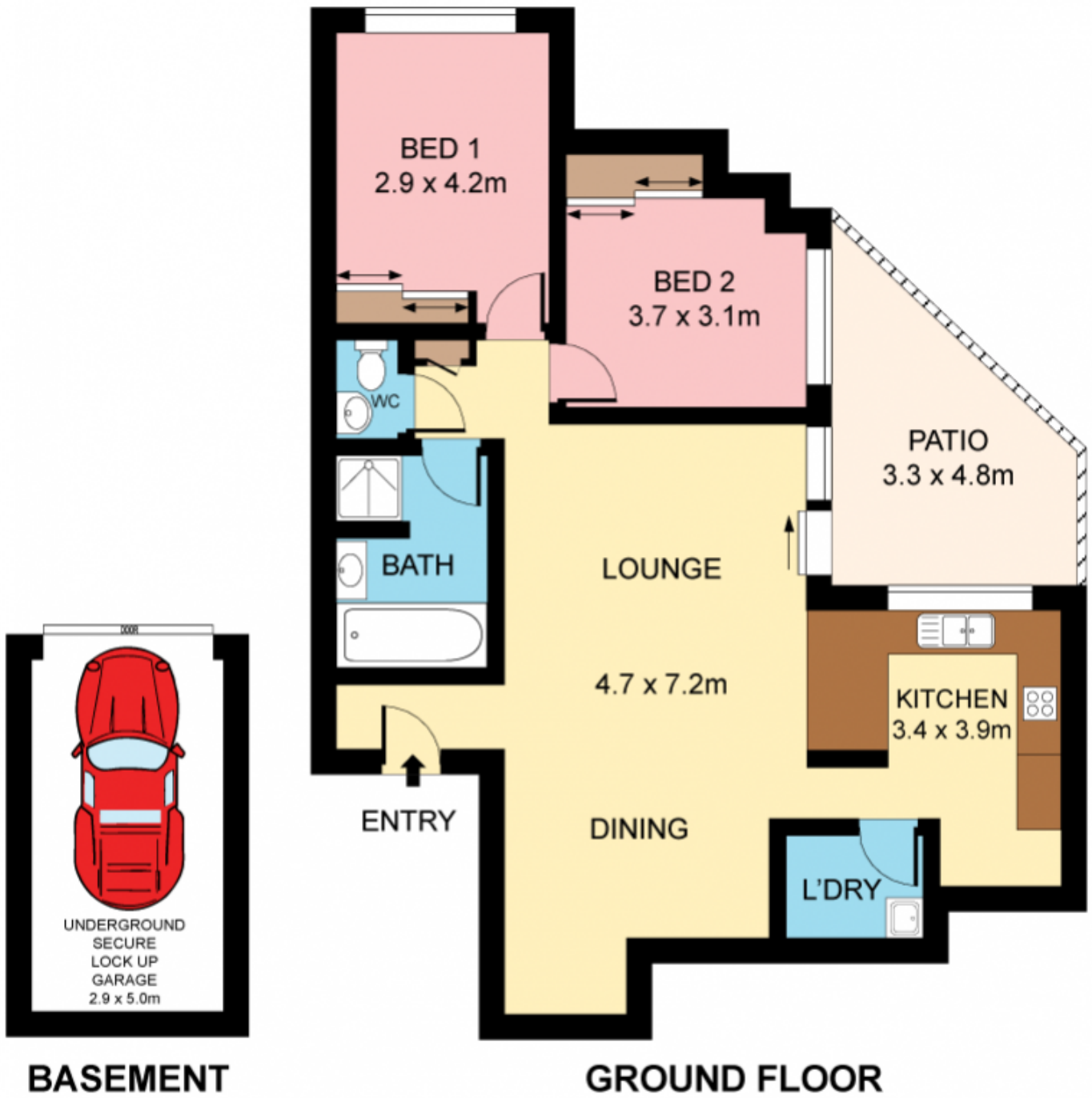
Offering a delightful sense of seclusion, this ground floor apartment is nestled amongst its garden setting providing an exceptionally spacious floor plan with easy access and alfresco deck. Positioned for a lifestyle of unbeatable convenience, its a short walk to a delightful array of village shops and cafes, rail and bus.

**Type** : Unit  
**Land Size** : 115 sqm  
**View** : <https://www.jreproperty.com.au/sale/nsw/sutherlandland/gymea/residential/unit/7488336>

- Appealing and modern well maintained security complex
- Generous living and dining expands onto private deck
- Extremely large entertainers kitchen with breakfast bar
- Two light and bright bedrooms, both with built in robes
- Bathroom with separate toilet, laundry & secure parking
- Beautifully presented, great entry into desirable locale



**Luke Jeffree**  
02 9540 2222



Plans shown are for presentation purposes only and are not part of any legal document or title. They are subject to errors, omissions, inaccuracies and should not be used as a sole and accurate reference. Interested parties should make their own inquiries using independent sources.

23/10 WARBURTON STREET

GYMEA