



17/58 Talara Road GYMEA NSW

2 1 2

Enjoying a leafy seclusion, elevated from the street, this spacious apartment presents an appealing lifestyle with stylish, modern interiors, in/outdoor living and an unbeatable location quietly placed just steps to the rail, school and the thriving hub of Gymea village. Updated fresh and bright, this is spectacular first home or downsizer buying.

Type : Apartment

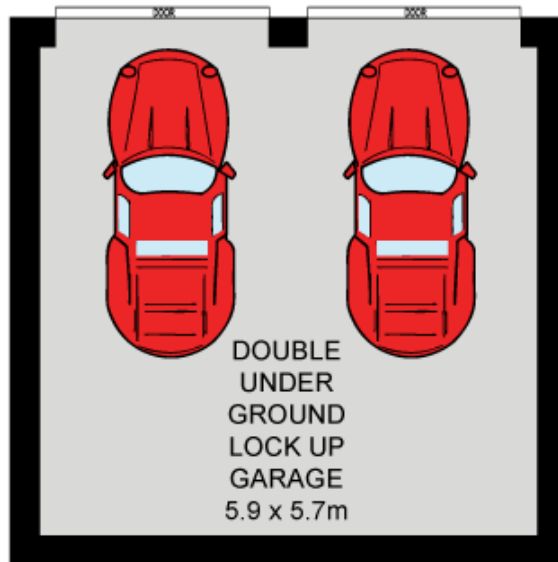
View : <https://www.jreproperty.com.au/sale/nsw/sutherland/gymea/residential/apartment/7488341>

Attractive modern security complex of just ten apartments
 Expansive open plan living incorporates lounge & dining
 Wide covered alfresco deck ideal for year round entertaining
 Modern kitchen is light & bright with new stainless appliances
 Generous beds with BIRs, appealing bath with separate

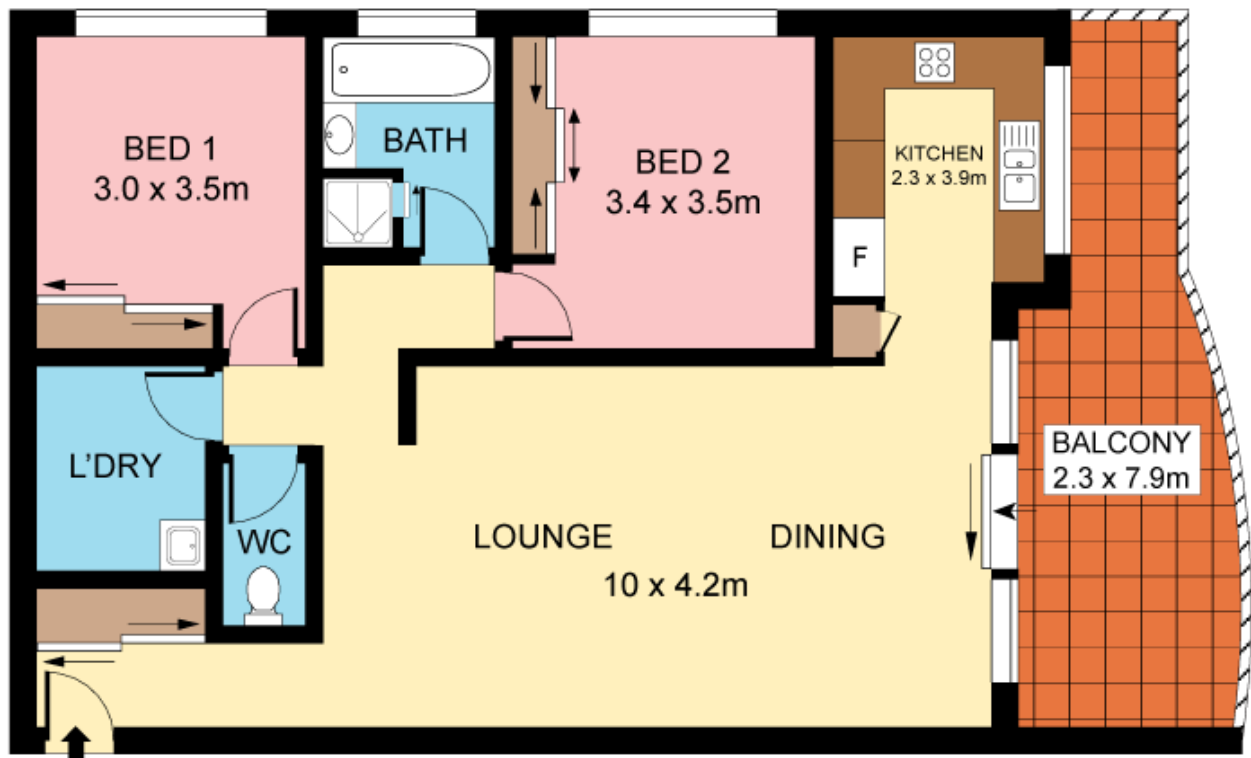


Luke Jeffree
02 9540 2222

[For full version visit the website](https://www.jreproperty.com.au)



BASEMENT



SECOND FLOOR



Plans shown are for presentation purposes only and are not part of any legal document or title. They are subject to errors, omissions, inaccuracies and should not be used as a sole and accurate reference. Interested parties should make their own inquiries using independent sources.

17/58 TALARA ROAD

GYMEA