



16/58 Talara Road GYMEA NSW

2 1 1

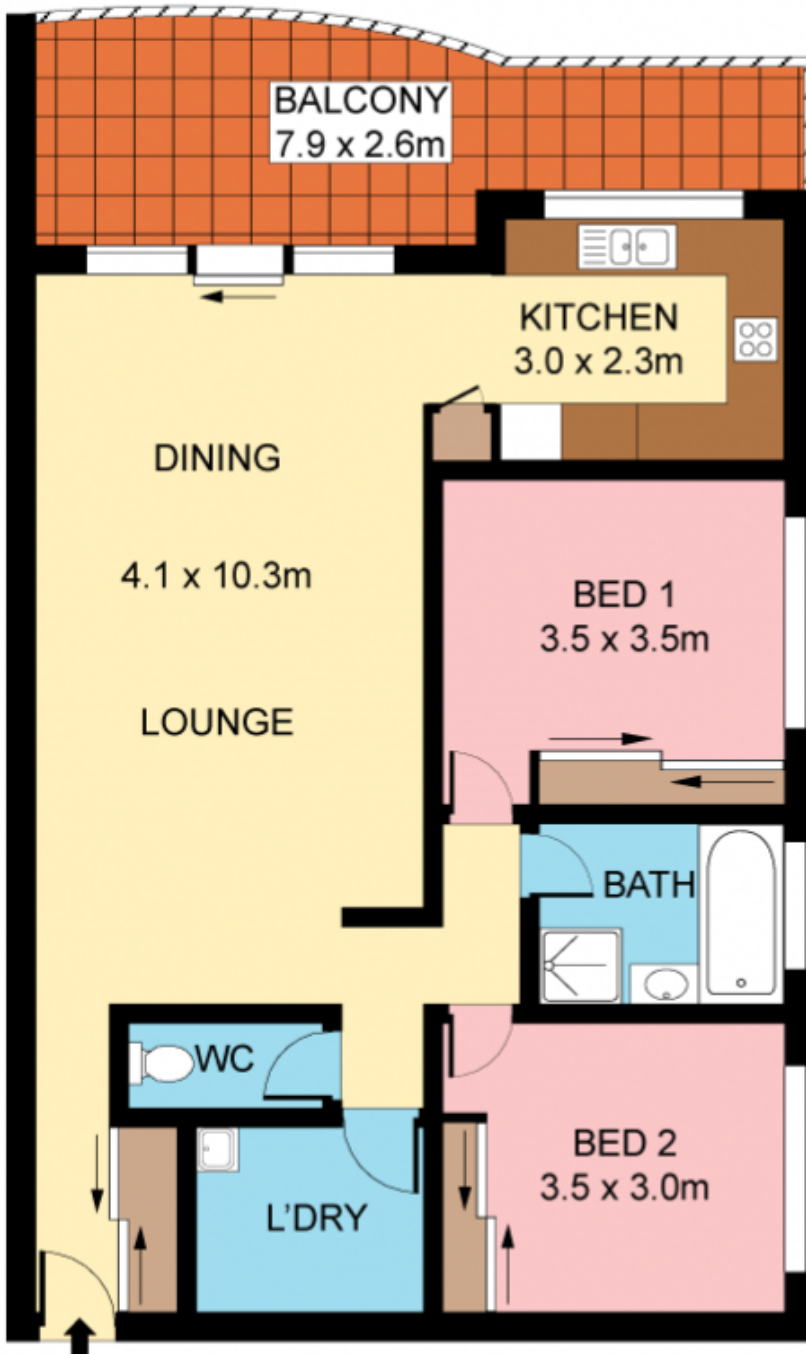
Enjoy an easy care lifestyle of comfort and convenience in this peaceful apartment set on the top level of an appealing low rise modern complex. Offering a sense of unrestricted space, open plan living expands onto the wide balcony ideal to relax or entertain in grand style. Located for lifestyle stroll to shops, cafes, school and rail.

Expansive family living and dining, convenient study niche
 Large modern kitchen with ample storage & gas cook top
 Two light and bright bedrooms both with banks of BIRs
 Stylish bathroom with Federation tiling and separate toilet
 Internal laundry, large storage cupboards & single garage
 Quality security complex, set to rear of block, convenient

Type : Unit
View : <https://www.jreproperty.com.au/sale/nsw/sutherland/gyMEA/residential/unit/7488344>



Luke Jeffree
02 9540 2222



SECOND FLOOR



BASEMENT



Plans shown are for presentation purposes only and are not part of any legal document or title. They are subject to errors, omissions, inaccuracies and should not be used as a sole and accurate reference. Interested parties should make their own inquiries using independent sources.

16/58 TALARA ROAD

GYMEA