



### 11 Rulwalla Place GYMEA NSW

4 3 2

Designed for seamless indoor/outdoor entertaining and quality family living, this refurbished home boasts impressive amenity set within a tranquil, leafy enclave. Multiple living areas offer a wealth of choice designed for all family combinations and enhanced by an inviting pool, covered alfresco cabana and perfectly aspected north to rear 556.4sqm lot.

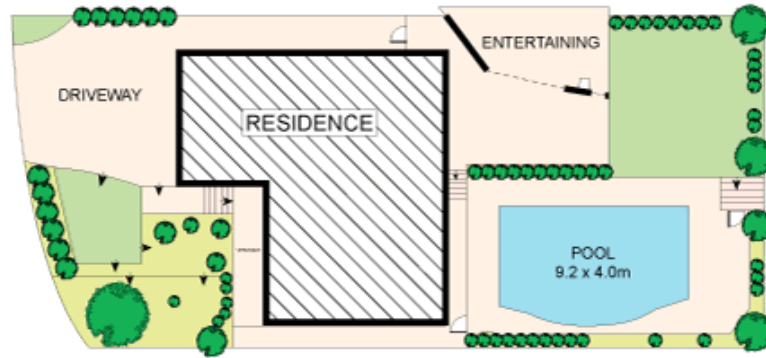
- Open plan living & dining with bi-folds to pool & front deck
- Living with built in projector and screen, rumpus with bar
- Stylish granite kitchen with full range of Smeg appliances
- Timber floors, poolside cabana, four beds, robes in three
- Master bed with ensuite, substantial main bath with spa
- Ducted air, alarm and storage, Kirrawee High catchment

**Land Size** : 556 sqm

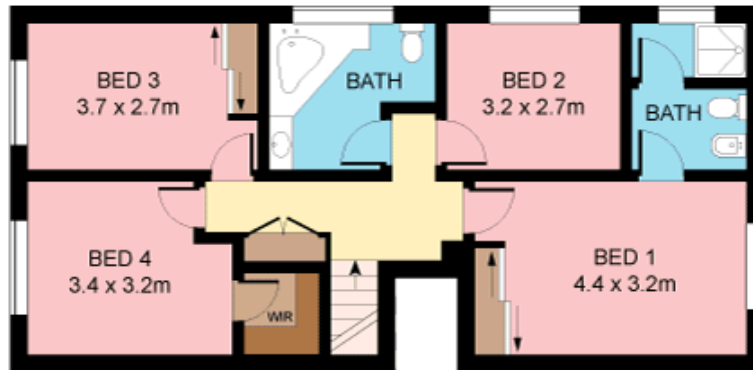
**View** : <https://www.jreproperty.com.au/sale/nsw/sutherland/gymea/residential/house/7488350>



**Luke Jeffree**  
**02 9540 2222**



**SITE PLAN**  
(NOT TO SCALE)



**FIRST FLOOR**



**GROUND FLOOR**



Plans shown are for presentation purposes only and are not part of any legal document or title. They are subject to errors, omissions, inaccuracies and should not be used as a sole and accurate reference. Interested parties should make their own inquiries using independent sources.