



275 Gymea Bay Road GYMEA BAY NSW

3 1 2

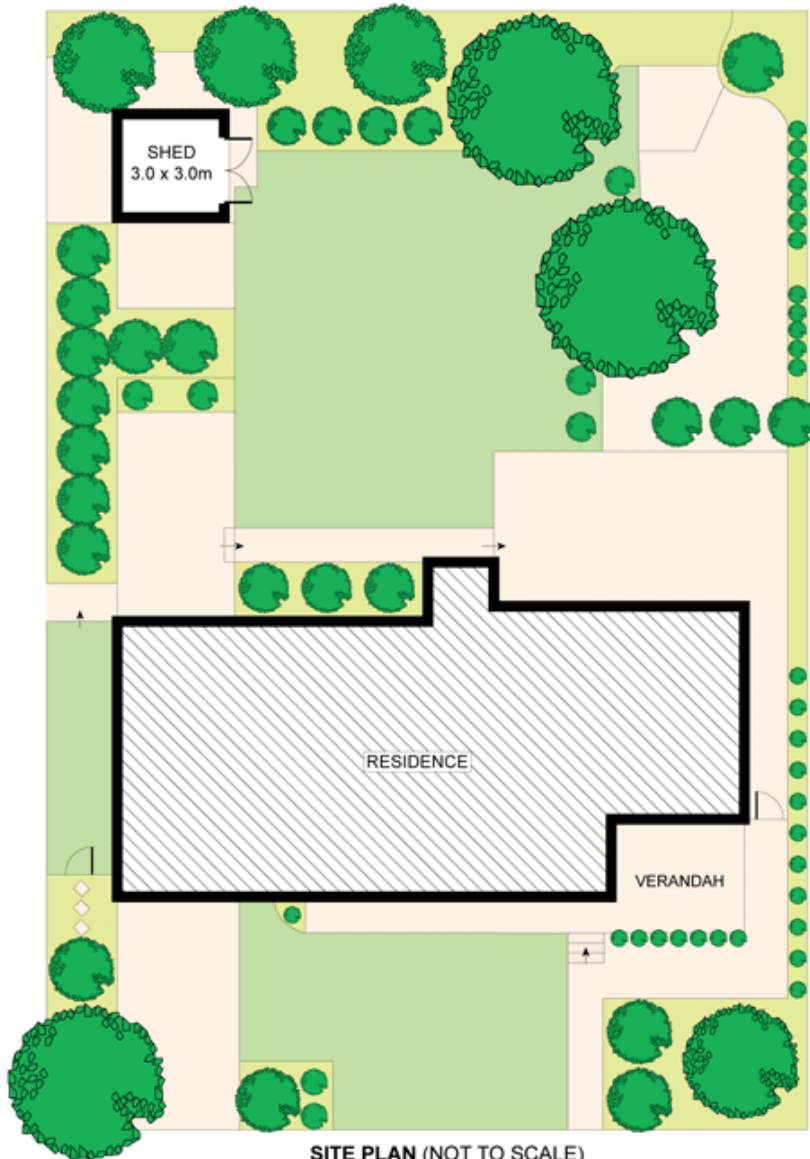
Boasting a picturesque street setting, this well maintained original home enjoys a wide 632sqm site with child friendly lawns and gardens and an easy living level floor plan ideal for young families. Fresh and bright with a choice of spacious living and entertaining areas plus a desirable north aspect enjoy as is or further enhance and capitalise.

- Formal lounge with good separation & decorative cornices
- Casual family living expands to leafy front alfresco terrace
- Central well maintained original kitchen with good storage
- Long entertainers terrace at the rear with shade pergola
- Three beds, original bath, air, single garage plus car space
- Family friendly locale close to shops, bus, school and bay

Type : House
Land Size : 632 sqm
View : <https://www.jreproperty.com.au/sale/nsw/sutherland/gymea-bay/residential/house/7488352>



Luke Jeffree
02 9540 2222



SITE PLAN (NOT TO SCALE)



GROUND FLOOR



Plans shown are for presentation purposes only and are not part of any legal document or title. They are subject to errors, omissions, inaccuracies and should not be used as a sole and accurate reference. Interested parties should make their own inquiries using independent sources.



275 GYMEA BAY ROAD

GYMEA BAY