



4A Avon Place GYMEA NSW

3 2 2

Enjoying a peaceful cul-de-sac location, this brick original home is positioned for a quality family lifestyle, displaying a floor plan that is adaptive to a variety of living configurations. Comfortable as is it offers most affordable entry level buying to purchase a torrens title home in GyMEA, presenting outstanding potential for a contemporary redesign.

- Extra wide frontage with north facing alfresco entertaining
- Formal dining/lounge, large family room with bar and air
- Well maintained original kitchen adjoins the casual dining
- Pizza oven on terrace, 3 beds on upper level with BIRs
- Large lower level retreat with powder, kitchenette and study
- Gated oversized carport, storage, Kirrawee High

Type : House
Land Size : 626 sqm
View : <https://www.jreproperty.com.au/sale/nsw/sutherlandland/gymea/residential/house/7488354>

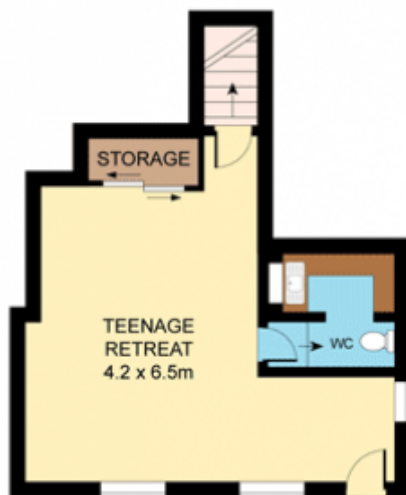


Luke Jeffree
02 9540 2222

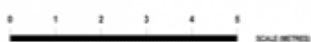
[For full version visit the website](https://www.jreproperty.com.au)



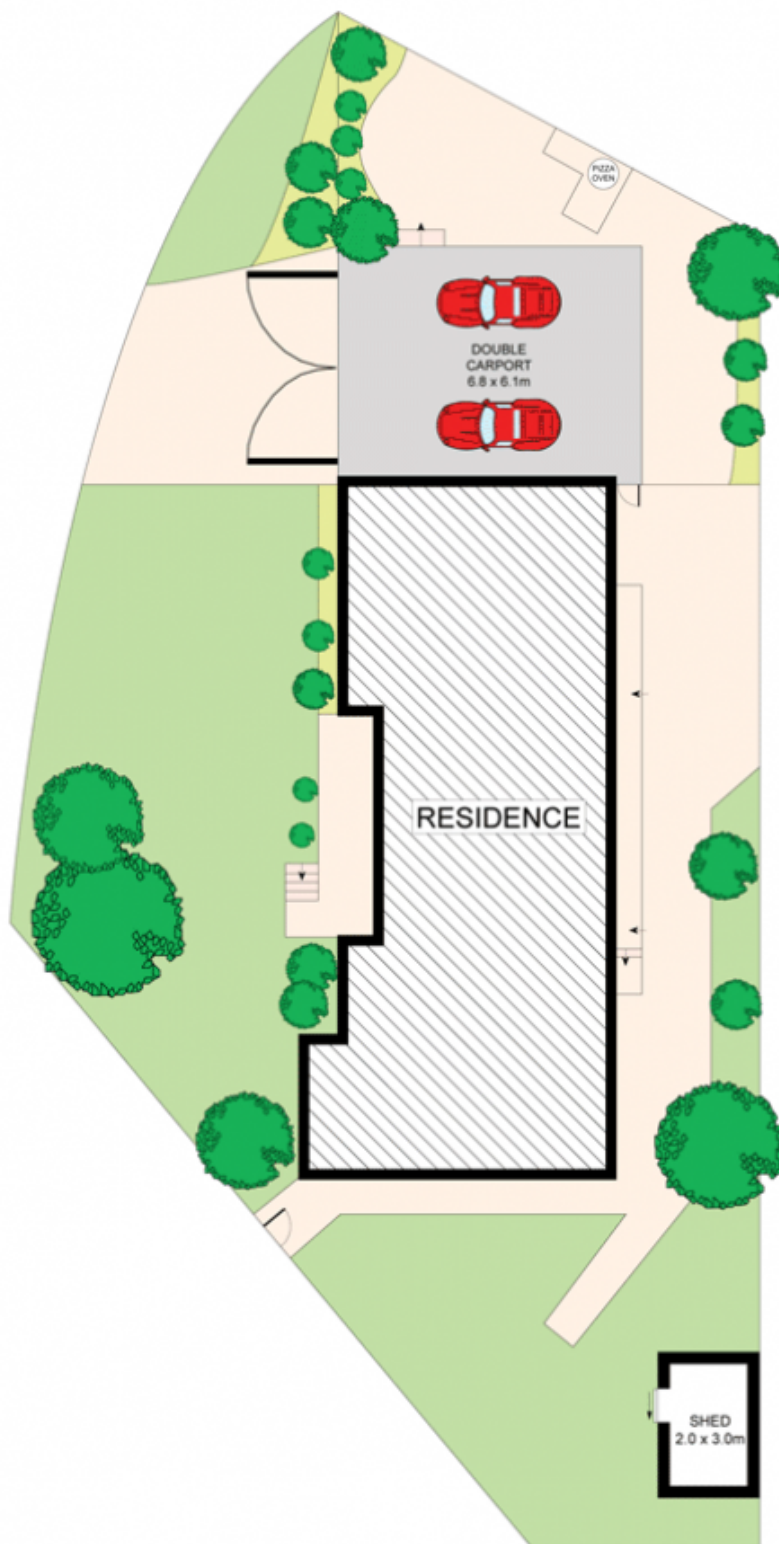
GROUND FLOOR



LOWER GROUND FLOOR



Plans shown are for presentation purposes only and are not part of any legal document or title. They are subject to errors, omissions, inaccuracies and should not be used as a sole and accurate reference. Interested parties should make their own inquiries using independent sources.



SITE PLAN
(NOT TO SCALE)

