



47 Bligh Street KIRRAWEE NSW

4 2 2

Capturing peaceful national parkland vistas from its commanding street position, this solid family home is now being offered for the first time since built in 1966. Fresh and bright with new carpets and modern updates, it displays a versatile floor plan enhanced by an appealing poolside covered alfresco entertaining area and private pool.

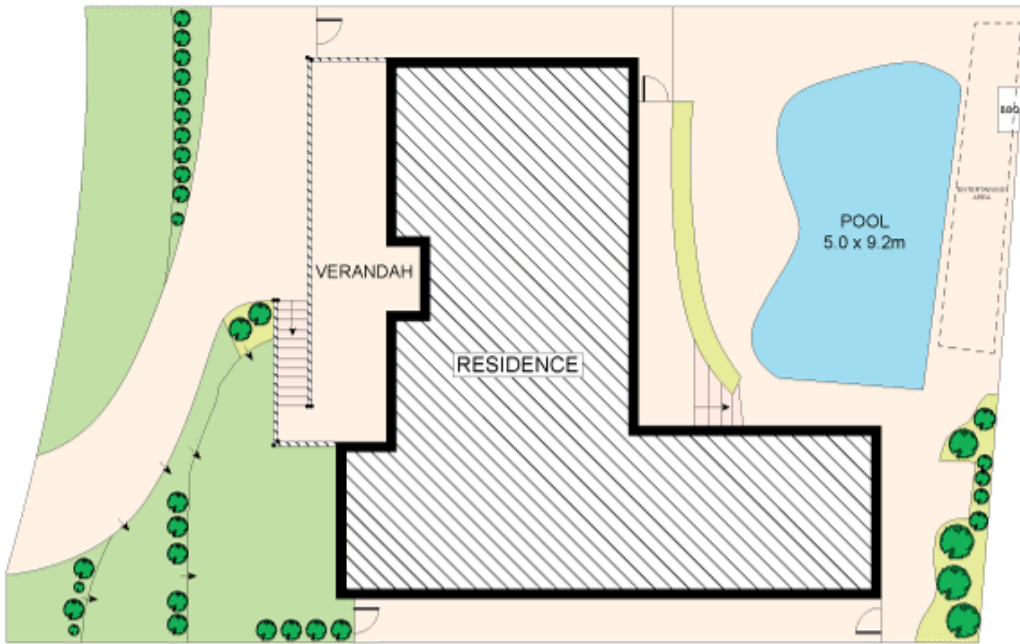
- Generous formal lounge and dining with reverse cycle air
- Wide front verandah, stylish granite kitchen, casual dining
- Large bedrooms all with BIRs, in/outdoor access to toilet
- Flexible 4th bedroom with ensuite or poolside games room
- House frame designed for 2nd level, under house storage
- Oversized 2 car garage, desirable Kirrawee High catchment

[For full version visit the website](https://www.jreproperty.com.au)

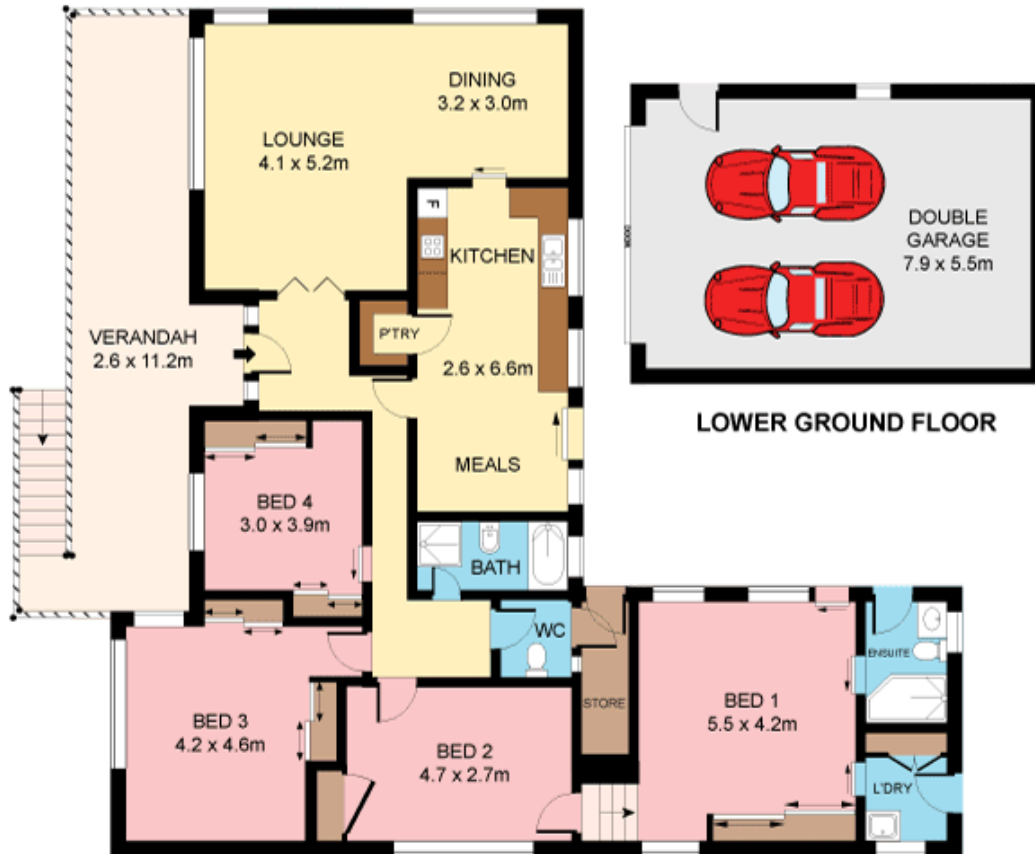
Type : House
Land Size : 556 sqm
View : <https://www.jreproperty.com.au/sale/nsw/sutherland/kirrawee/residential/house/7488357>



Luke Jeffree
02 9540 2222



SITE PLAN (NOT TO SCALE)



GROUND FLOOR



Plans shown are for presentation purposes only and are not part of any legal document or title. They are subject to errors, omissions, inaccuracies and should not be used as a sole and accurate reference. Interested parties should make their own inquiries using independent sources.