



3/8 Premier Street GYMEA NSW

3 2 1

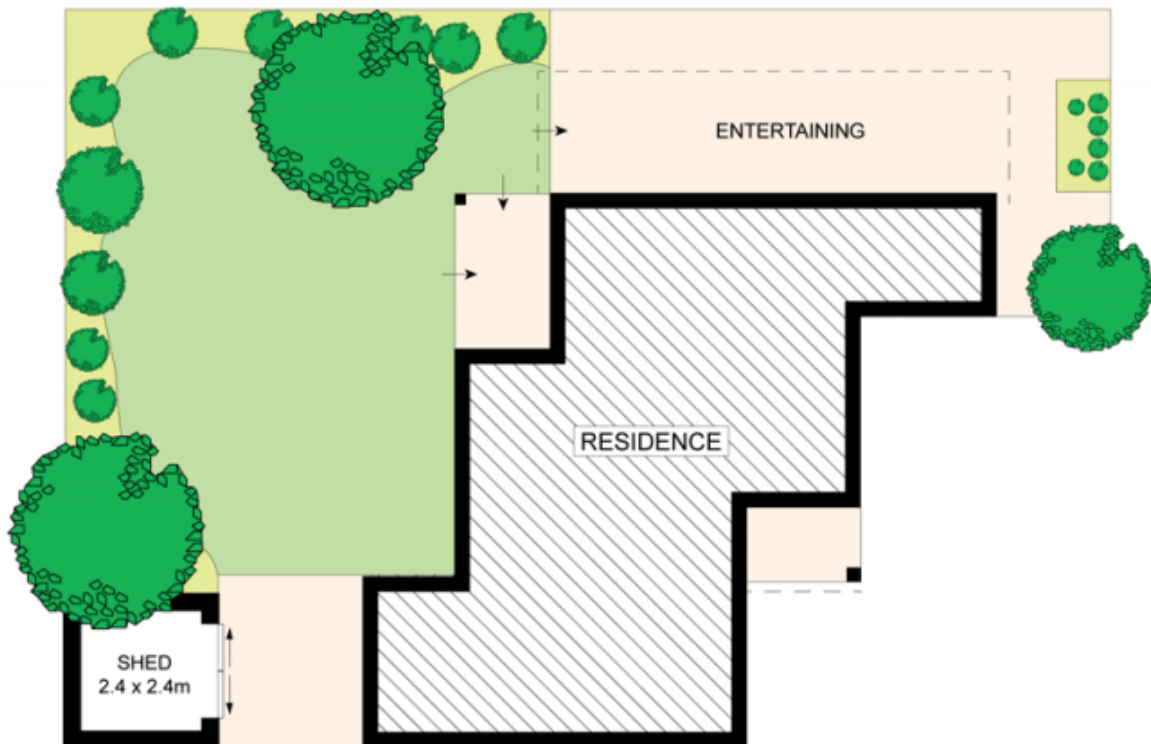
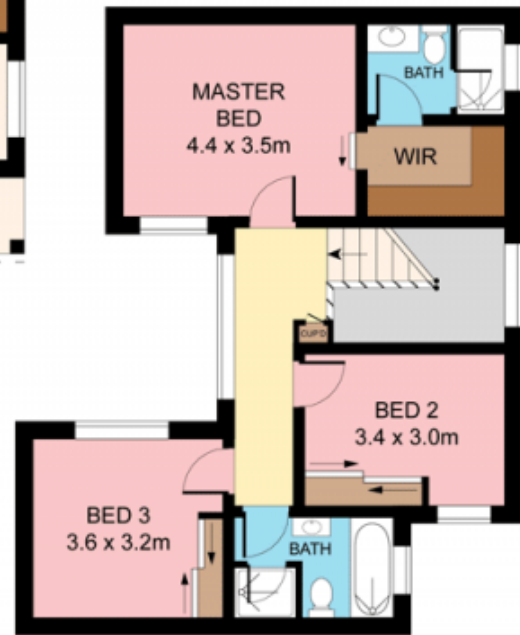
Set to the rear of a boutique complex of just three, this modern north facing townhouse offers an enticing lifestyle choice, wrapped in private gardens with spacious interiors and multiple alfresco areas. Blissfully quiet, stroll to Gymea village, rail, bus and the Tradies club.

- Light timber floors, spacious separate lounge and dining
- Private courtyard retreat plus large covered alfresco terrace
- Stylish stone kitchen with breakfast bar & quality appliances
- 3 spacious beds all with robes, master with WIR & ensuite
- Convenient powder room on lower level, internal laundry
- Reverse cycle air in living, large garage, visitor parking

Type : Townhouse
Building Size : 28 sqm
View : <https://www.jreproperty.com.au/sale/nsw/sutherland/gymea/residential/townhouse/7488359>



Dion Moon
02 9540 2222



Plans shown are for presentation purposes only and are not part of any legal document or title. They are subject to errors, omissions, inaccuracies and should not be used as a sole and accurate reference. Interested parties should make their own inquiries using independent sources.

3/8 PREMIER STREET

GYMEA

