



**12/43 Talara Road GYMEA NSW**

2 1 1

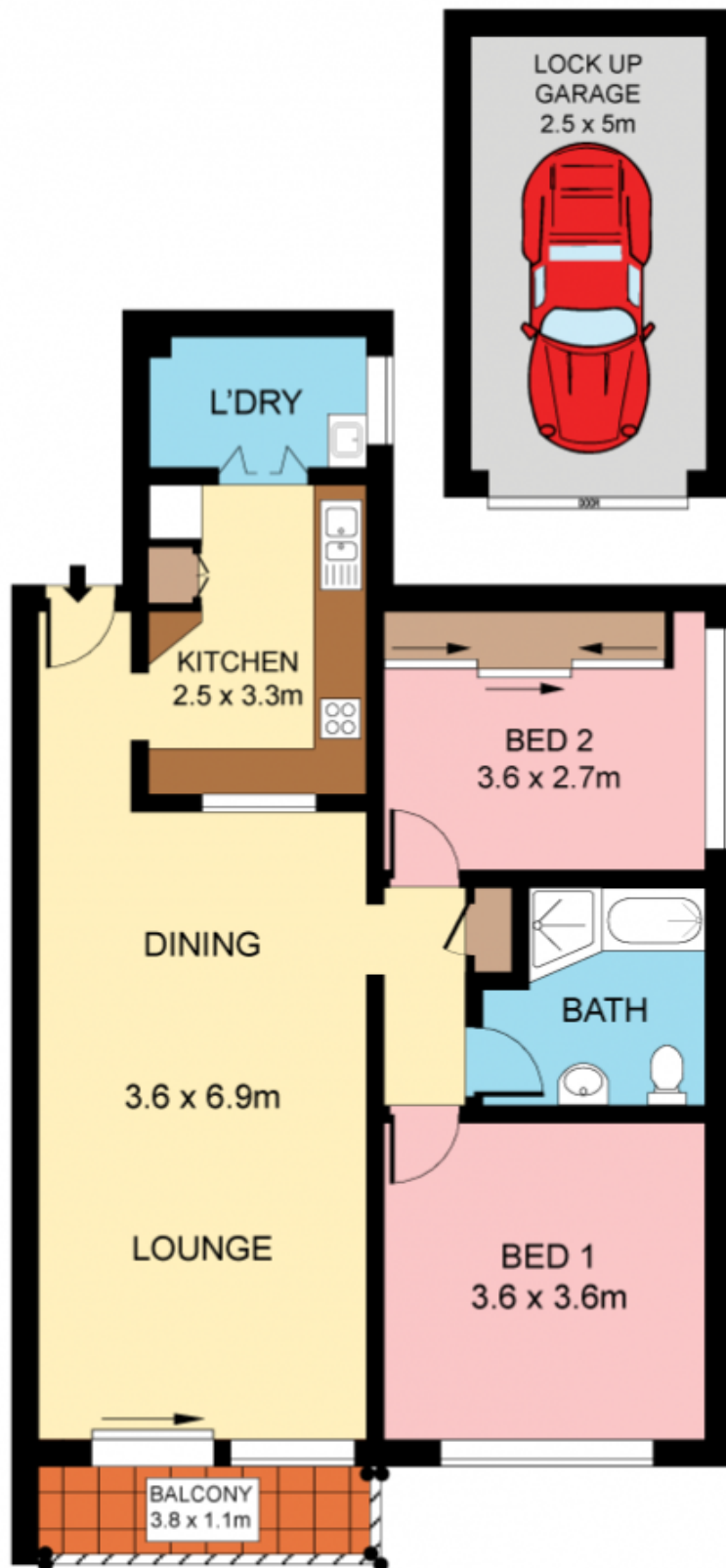
Peacefully set a quick and easy stroll to a host of fantastic amenities, this spacious top floor apartment offers the perfect entry point or investment into a sought after locale. Light filled throughout enjoy its many attributes as is or upgrade and reap the rewards.

- Generous open plan lounge & dining opens to wide deck
- Substantial kitchen with large servery and breakfast bar
- Two well proportioned bedrooms, one with built in robes
- Original tidy bathroom, convenient internal laundry
- Quality full brick security complex, quiet cul-de-sac street
- Lock up garage, walk to Gymea station, bus & village shops

**View :** <https://www.jreproperty.com.au/sale/nsw/sutherland/gymea/residential/unit/7488360>



**Dion Moon**  
02 9540 2222



**TOP FLOOR**



Plans shown are for presentation purposes only and are not part of any legal document or title. They are subject to errors, omissions, inaccuracies and should not be used as a sole and accurate reference. Interested parties should make their own inquiries using independent sources.