



#### 4 Coopernook Avenue GYMEA BAY NSW

5 3 4

Positioned within one of the areas finest streets, this impressive residence is defined by its generously proportioned living and entertaining areas, stylish contemporary finishes and spectacular outdoor entertaining. Stretching across two levels with a family centred design it affords a premium lifestyle within the Kirrawee High catchment a stroll to shops and bay.

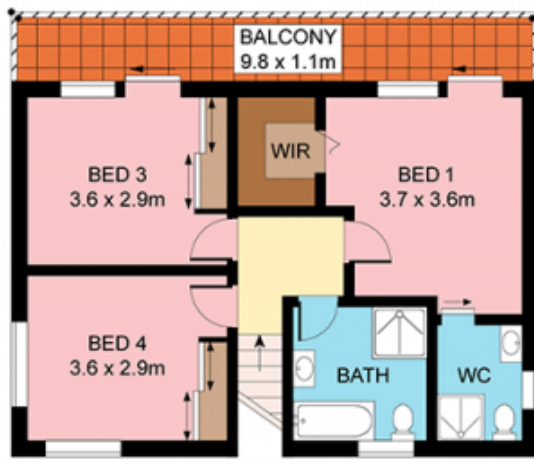
- Sweeping formal zones step down to large family living
- Stylish Caesarstone kitchen with bi-fold servery to deck
- Superb alfresco entertaining, stunning manicured gardens
- Flexible five beds all with BIRs, includes lower level guest
- Master with ensuite accesses verandah, security and air
- Timber floors, covered carport for boat or van, garden shed

[For full version visit the website](https://www.jreproperty.com.au)

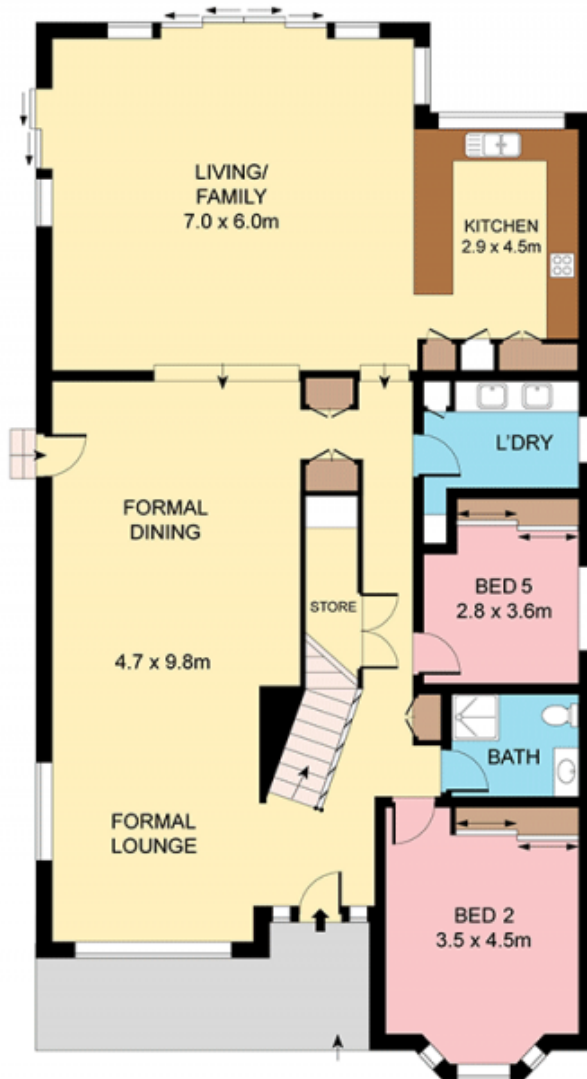
**Type** : House  
**Land Size** : 828 sqm  
**View** : <https://www.jreproperty.com.au/sale/nsw/sutherland/gymea-bay/residential/house/7488361>



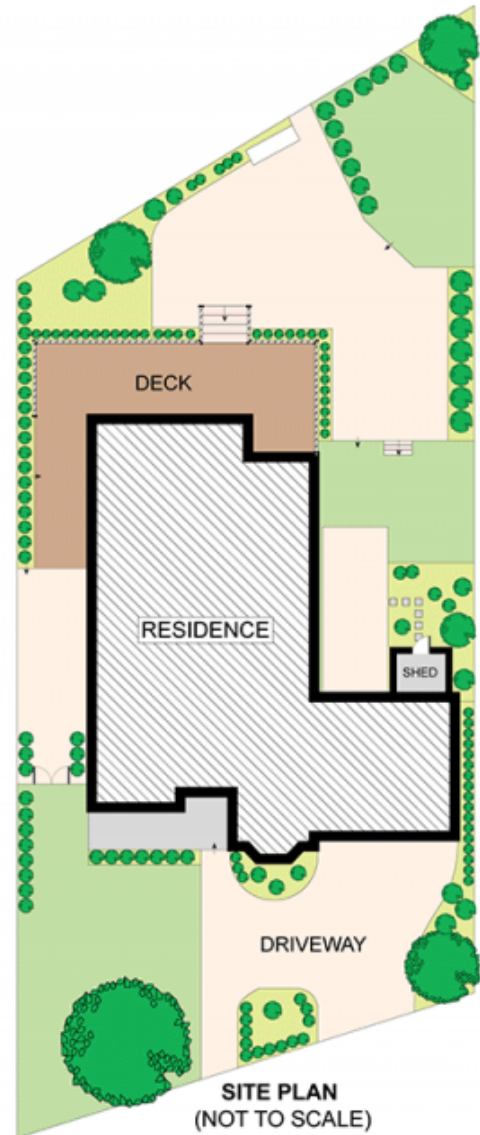
**Luke Jeffree**  
02 9540 2222



**FIRST FLOOR**



**GROUND FLOOR**



Plans shown are for presentation purposes only and are not part of any legal document or title. They are subject to errors, omissions, inaccuracies and should not be used as a sole and accurate reference. Interested parties should make their own inquiries using independent sources.

4 COOPERNOOK AVENUE

GYMEA BAY

