



5/19-23 Koorabel Avenue GYMEA NSW

2 1 2

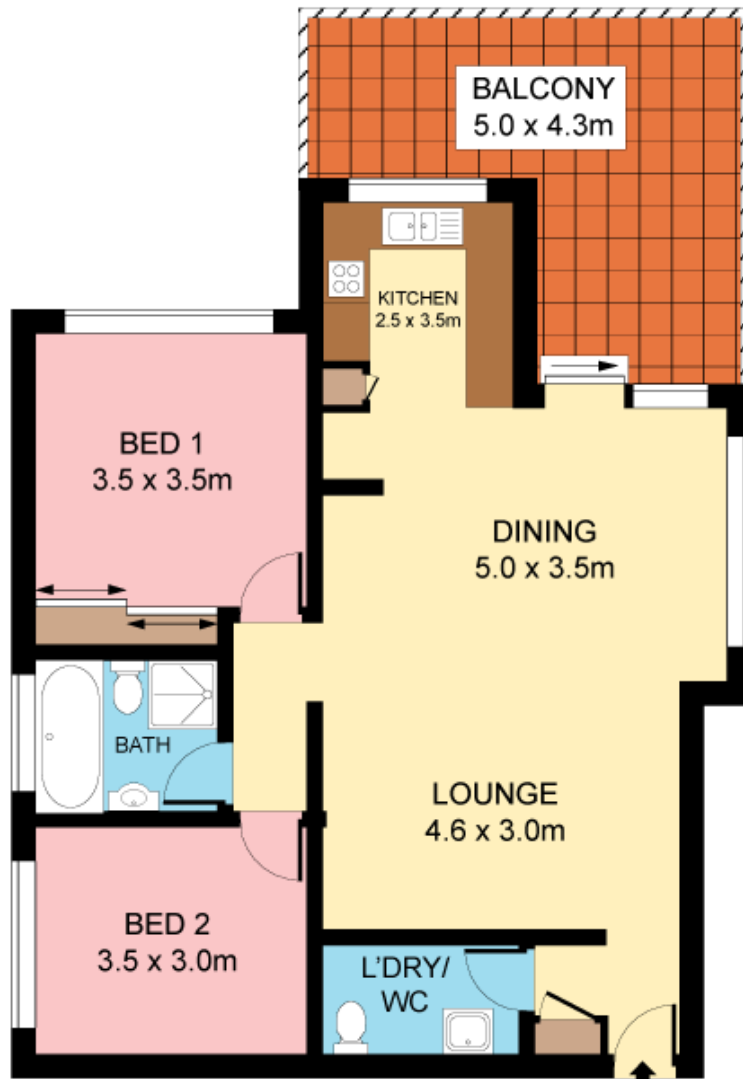
Enjoying the perfect balance of exceptionally convenient location with leafy tranquil surrounds this striking apartment offers abundant space with sprawling living areas and a wide wraparound verandah. Located in an attractive low rise complex its ready to enjoy an easy walk to Gymea Bay Roads shopping and caf? district, rail and bus.

- Generous open plan lounge and dining, light and bright
- Superb wrapround alfresco deck perfect for entertaining
- Modern kitchen with stainless appliances & gas cook top
- Two good sized beds, master with fully fitted built in robes
- Well placed laundry with powder room, intercom entrance
- Secure double lock up garage, fenced communal gardens

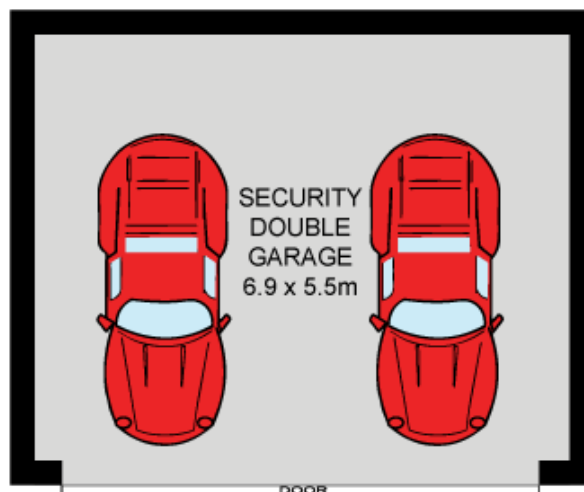
Type : Unit
Land Size : 125 sqm
View : <https://www.jreproperty.com.au/sale/nsw/sutherlandland/gymea/residential/unit/7488367>



Luke Jeffree
02 9540 2222



FIRST FLOOR



BASEMENT



Plans shown are for presentation purposes only and are not part of any legal document or title. They are subject to errors, omissions, inaccuracies and should not be used as a sole and accurate reference. Interested parties should make their own inquiries using independent sources.