



**6/11-13 Warburton Street GYMEA NSW**

2 1 1

Positioned on the second floor of a quality security complex this bright and spacious apartment benefits from its prime corner location and northern exposure. The generous floor plan is well laid out featuring modern updates with easy flowing indoor/outdoor living and entertaining. Located for lifestyle, stroll to local shops and eateries, bus and rail.

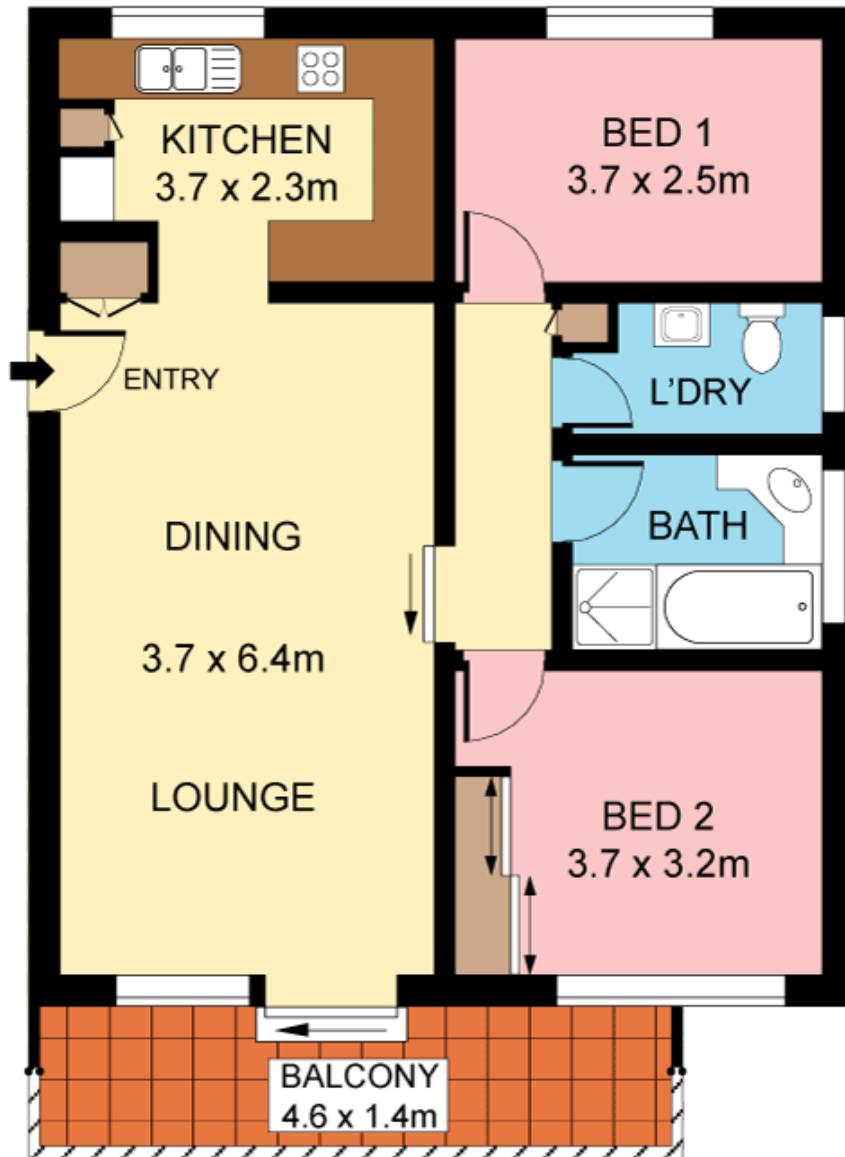
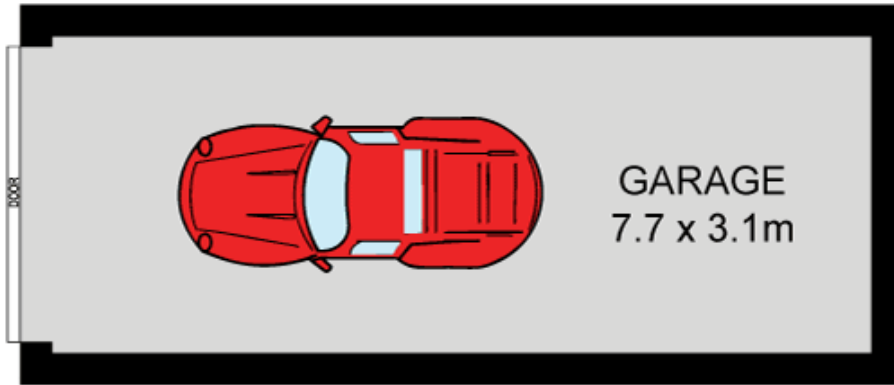
- Fernleigh is a well maintained security complex of just 10
- Open plan lounge and dining extend to the broad balcony
- Large stylish kitchen with new dishwasher & stainless oven
- Two well proportioned bedrooms, master with bank of robes
- Laundry, large single garage with storage, visitor parking
- Fenced barbeque and child friendly lawn, no common

**Type** : Unit  
**Land Size** : 105.2 sqm  
**View** : <https://www.jreproperty.com.au/sale/nsw/sutherlandland/gymea/residential/unit/7488368>



**Luke Jeffree**  
02 9540 2222

[For full version visit the website](https://www.jreproperty.com.au)



**SECOND FLOOR**



Plans shown are for presentation purposes only and are not part of any legal document or title. They are subject to errors, omissions, inaccuracies and should not be used as a sole and accurate reference. Interested parties should make their own inquiries using independent sources.