



16/11-15 Chapman Street GYMEA NSW

2 2 2

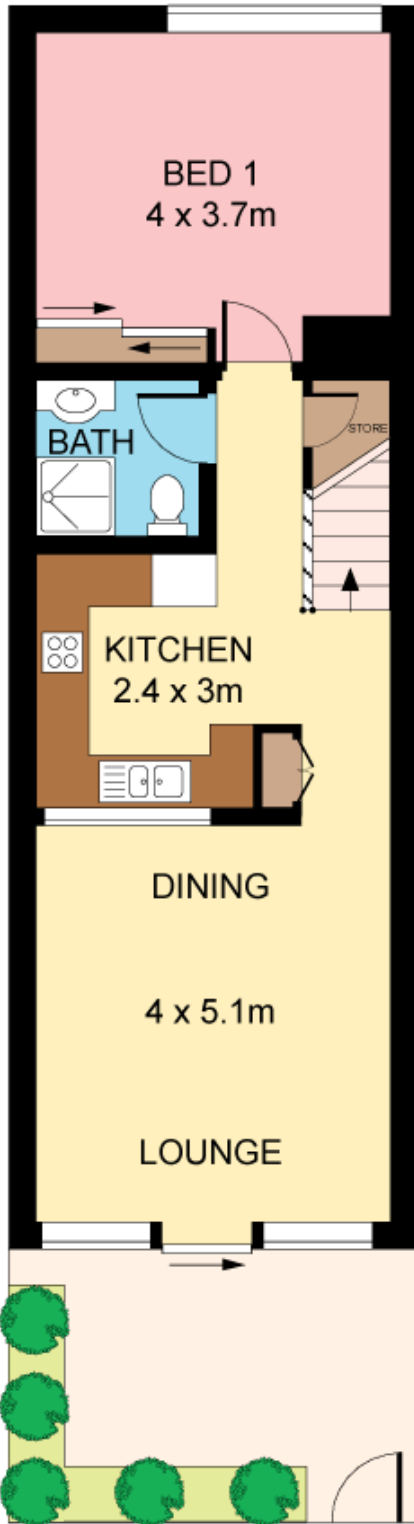
Contemporary design, peaceful setting and outstanding convenience exemplify this striking two level apartment offering immense appeal for the discerning buyer. Stylishly appointed with private courtyard entertaining, a spacious floor plan offers ideal separation and a host of quality amenities. Lock up the car and stroll to rail, shops and cafes.

- Combined lounge and dining extends to alfresco courtyard
- Quality Caesarstone kitchen with stainless appliances
- Two beds set over two levels with excellent separation
- Each level serviced by designer bath, internal laundry
- BIRs, double lock up basement garage, intercom entry
- Exceptional first home, downsizer or investor buying

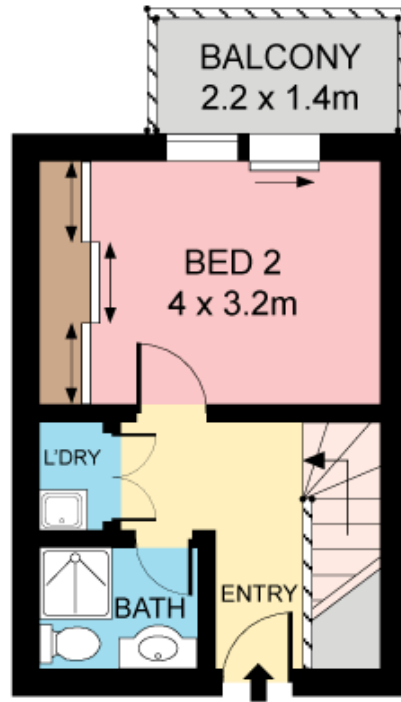
Land Size : 131 sqm
View : <https://www.jreproperty.com.au/sale/nsw/sutherland/gyMEA/residential/unit/7488370>



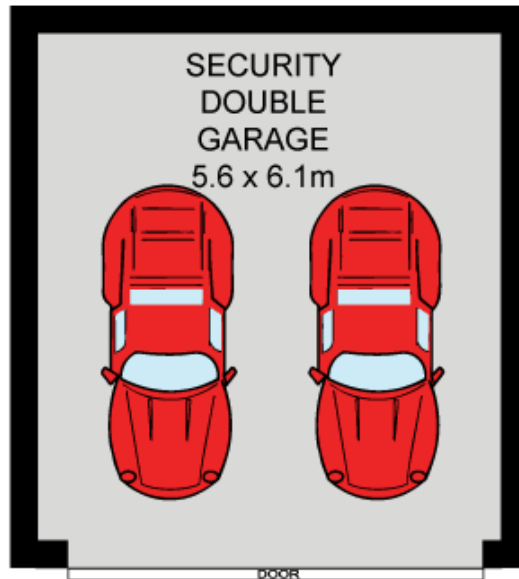
Dion Moon
02 9540 2222



GROUND FLOOR



FIRST FLOOR



LOWER GROUND FLOOR



Plans shown are for presentation purposes only and are not part of any legal document or title. They are subject to errors, omissions, inaccuracies and should not be used as a sole and accurate reference. Interested parties should make their own inquiries using independent sources.