



18 Kanning Avenue GYMEA BAY NSW

4 3 2

Showcasing a just completed comprehensive renovation, this striking home offers the best in contemporary living for the whole family to enjoy. Boasting a preferred north aspect with a generous 954sqm lot, easy care landscaped gardens and pool it enjoys a premium location set in a whisper quiet street walking distance to schools, shops, bus and rail.

- Light filled and inviting with timber floors and neutral tones
- Spacious living, stone kitchen, over-sized oven & cooktop
- Large alfresco deck, partially enclosed for year round use
- 4 generous beds, master with WIR and ensuite, front porch
- Lower level with 2 games rooms, fire, 3rd bath and storage

[For full version visit the website](https://www.jreproperty.com.au)

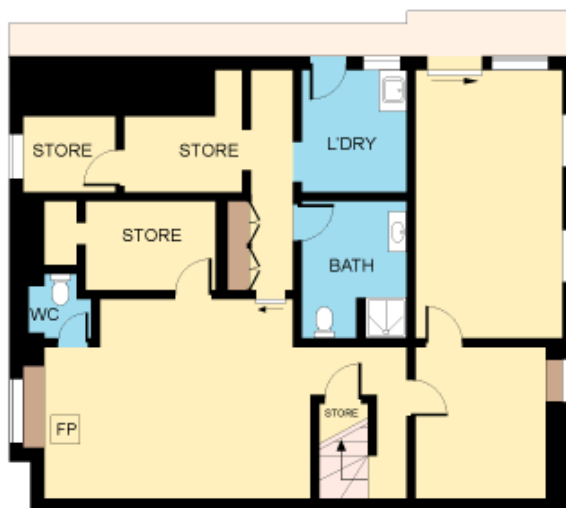
Type : House
Land Size : 954 sqm
View : <https://www.jreproperty.com.au/sale/nsw/sutherland/gymea-bay/residential/house/7488375>



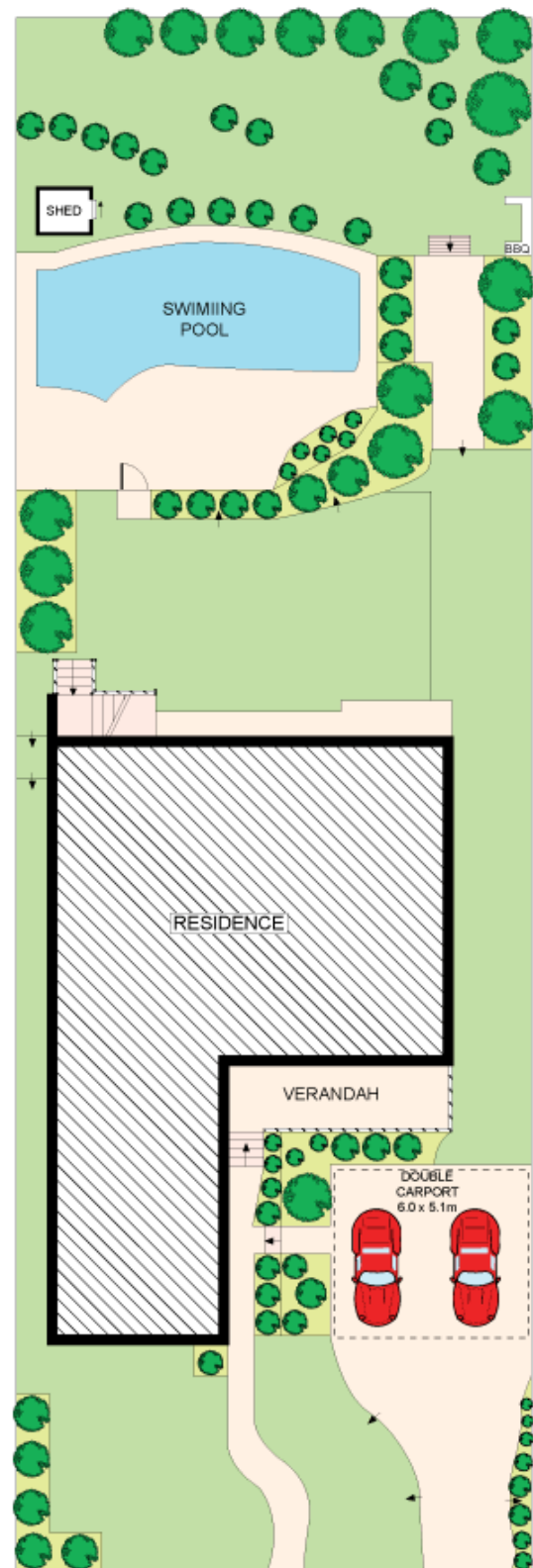
Luke Jeffree
02 9540 2222



GROUND FLOOR



LOWER GROUND FLOOR



**SITE PLAN
(NOT TO SCALE)**



Plans shown are for presentation purposes only and are not part of any legal document or title. They are subject to errors, omissions, inaccuracies and should not be used as a sole and accurate reference. Interested parties should make their own inquiries using independent sources.

18 KANNING AVENUE

GYMEA BAY