



9/13-17 Moani Avenue GYMEA NSW

2 1 1

Immaculate throughout and impressively proportioned, this top floor apartment offers exceptional first home or investor buying further enhanced by its prime street location, an easy walk to Gymeas vibrant hub. Set to the end of a peaceful cul-de-sac its filled with natural light enjoying open, leafy vistas from its generous balcony.

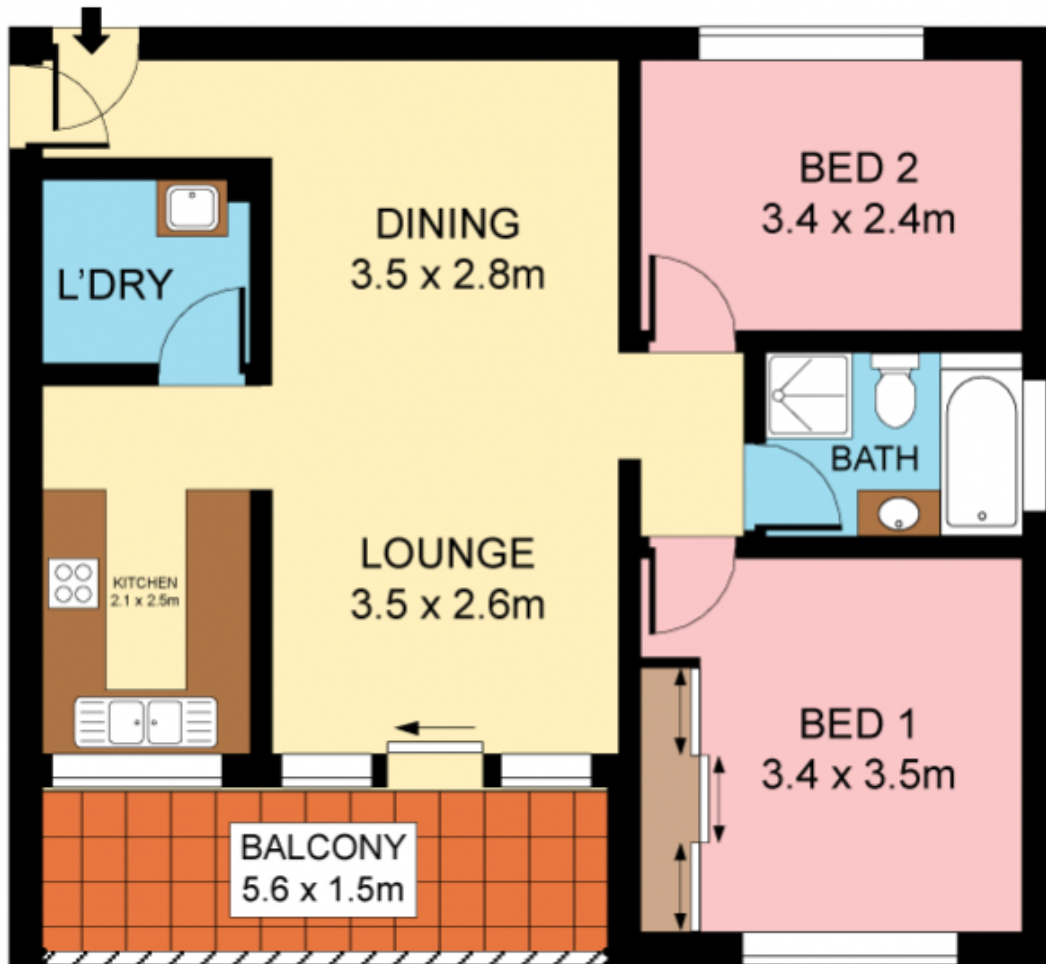
- Generous open plan living areas adjoin wide balcony
- Immaculate original kitchen with pleasing proportions
- Two good sized bedrooms, master with built in robes
- High ceilings, storage cupboards, generous laundry
- Secure basement single car space, lock up storage
- Well maintained building with leafy garden surrounds

All reasonable offers will be considered

Land Size : 95 sqm
View : <https://www.jreproperty.com.au/sale/nsw/sutherland/gymea/residential/unit/7488378>



Dion Moon
02 9540 2222



SECOND FLOOR



BASEMENT



Plans shown are for presentation purposes only and are not part of any legal document or title. They are subject to errors, omissions, inaccuracies and should not be used as a sole and accurate reference. Interested parties should make their own inquiries using independent sources.