



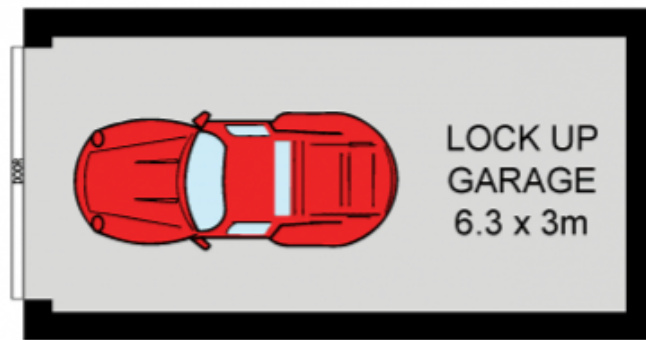
5/76 Talara Road GYMEA NSW

2 1 1

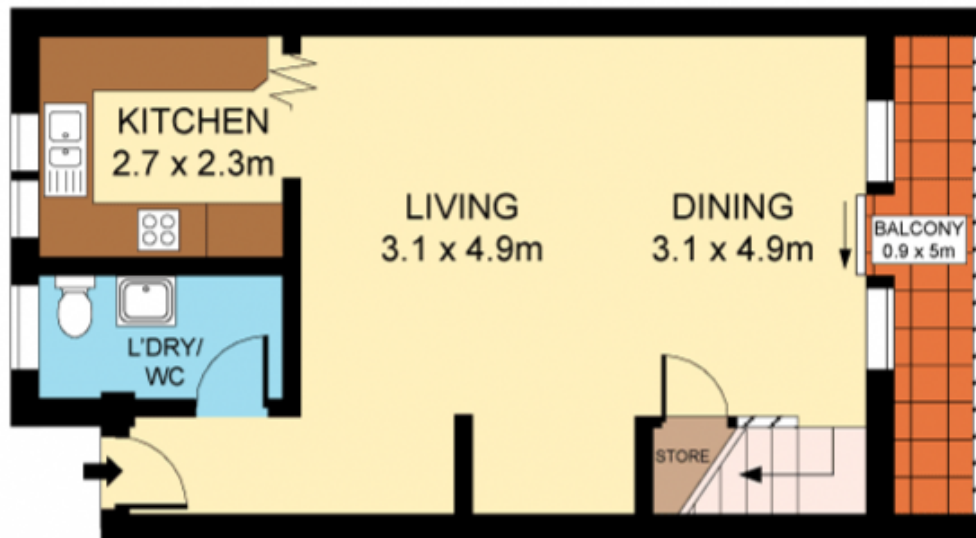
Light, spacious and extremely well located, this modern townhouse offers broad appeal positioned within easy walking distance of village shops and eateries, schools, bus and rail. Quietly placed to the rear of an attractive garden complex it presents a well laid out, two level floor plan with excellent proportions plus two balconies immersed in the leafy surrounds.

- Well maintained throughout, floating timber floors
- Open plan living, intimate balcony, timber kitchen
- 2 spacious beds, master with private balcony, BIRs
- Internal laundry with powder room, fresh bathroom
- Large corner bath, secure single garage, storage
- Ideal easy care 1st home, investors or downsizers

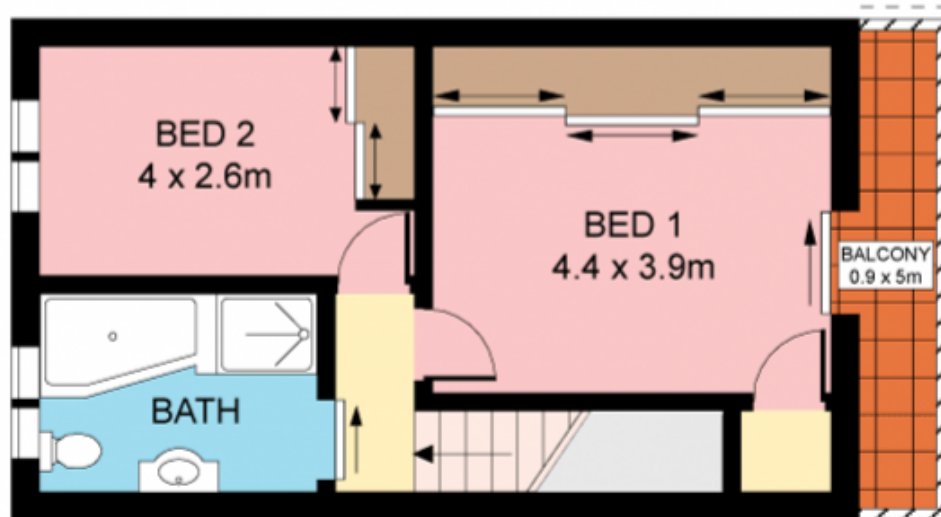
Type : Townhouse
Land Size : 107 sqm
View : <https://www.jreproperty.com.au/sale/nsw/sutherlandland/gymea/residential/townhouse/7488380>



BASEMENT



GROUND FLOOR



FIRST FLOOR



Plans shown are for presentation purposes only and are not part of any legal document or title. They are subject to errors, omissions, inaccuracies and should not be used as a sole and accurate reference. Interested parties should make their own inquiries using independent sources.