



**31/1-9 Warburton Street GYMEA NSW**

2 1 1

Designed to impress, this recently renovated apartment displays good taste and style, filled with natural light and capturing the cooling breezes from its elevated ground floor position. Offering the best in lifestyle attributes, its exceptionally placed an easy level stroll to Gymea villages boutique shops and diverse eateries, rail, bus and local schools.

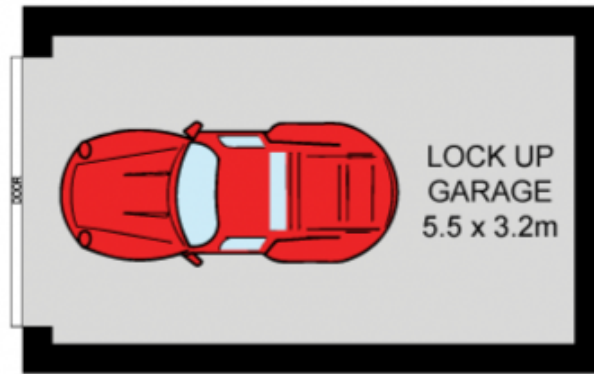
- Appealing floating timber floors, fresh neutral tones
- Spacious separate living and dining, wide alfresco deck
- Modern kitchen, new designer bathroom, large laundry
- Light filled over sized bedrooms both with built in robes
- Excellent storage, secure lock up garage, intercom entry
- Solid building, a very stylish entry into a popular enclave

**Type** : Unit  
**Building Size** : 82 sqm  
**View** : <https://www.jreproperty.com.au/sale/nsw/sutherland/gymea/residential/unit/7488385>

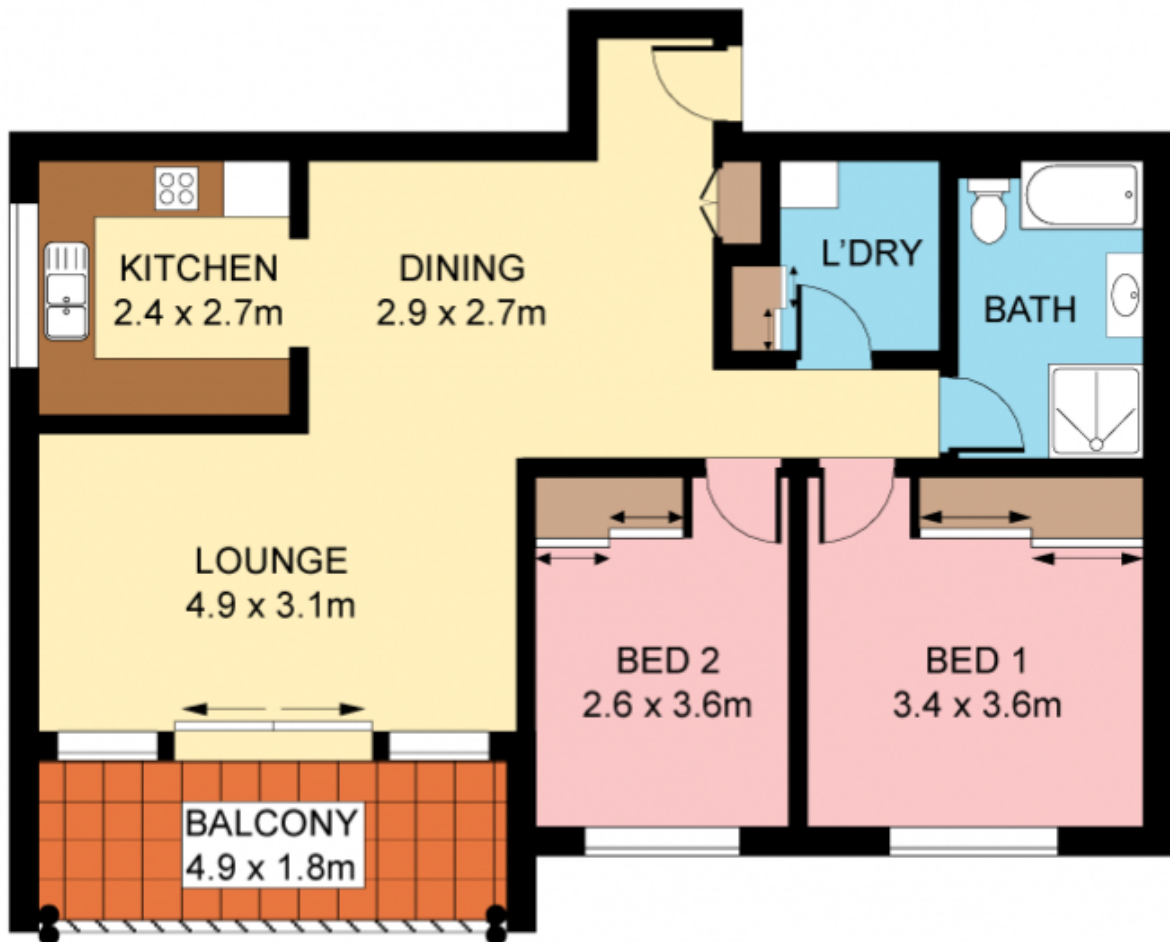


**Luke Jeffree**  
02 9540 2222

[For full version visit the website](https://www.jreproperty.com.au)



**GROUND FLOOR**



**RAISED GROUND FLOOR**



Plans shown are for presentation purposes only and are not part of any legal document or title. They are subject to errors, omissions, inaccuracies and should not be used as a sole and accurate reference. Interested parties should make their own inquiries using independent sources.

31/1 WARBURTON STREET

GYMEA