



**33/19-21 Central Road MIRANDA NSW**

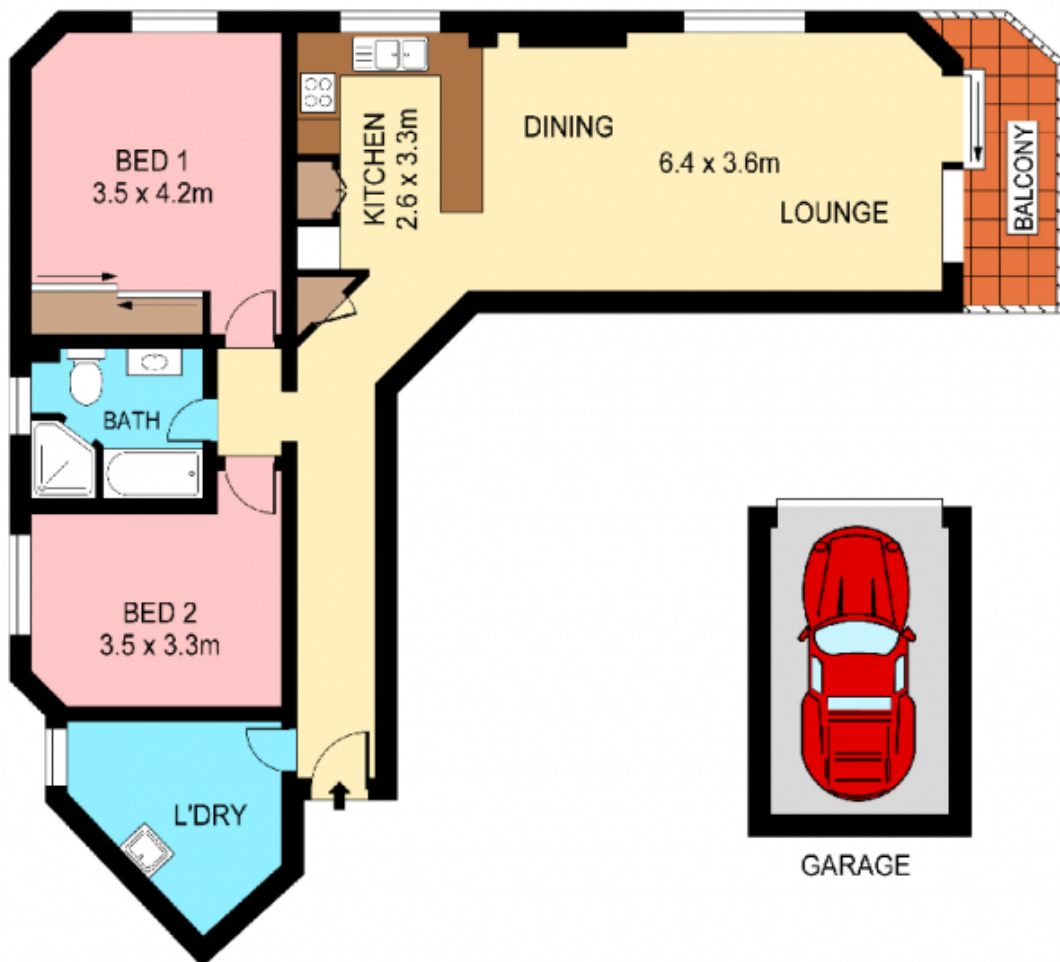
2 1 1

Enjoying 4th floor elevation and a prime north west facing corner position, this light filled original apartment offers an easy care lifestyle of outstanding convenience. Benefiting from far reaching district panoramas, its tidy interiors present potential to further capitalise offering an exceptional opportunity for the 1st home buyers or investors.

- Spacious open plan lounge & dining, reverse air-con.
- Enjoy the striking views from the generous balcony
- Original kitchen with dishwasher, ample storage
- Two spacious bedrooms, main with robes, intercom
- Large laundry with storage, lock up garage, lift access
- Just steps to Westfield Miranda, rail and local shops

**Type** : Unit  
**Building Size** : 86 sqm  
**Land Size** : 101 sqm  
**View** : <https://www.jreproperty.com.au/sale/nsw/sutherland/miranda/residential/unit/7488388>

[For full version visit the website](https://www.jreproperty.com.au)



LEVEL 4

NOTE : SINGLE LOCK-UP GARAGE



Plans shown are for presentation purposes only and are not part of any legal document or title. They are subject to errors, omissions, inaccuracies and should not be used as a sole and accurate reference. Interested parties should make their own inquiries using independent sources.



33/19 CENTRAL ROAD

MIRANDA