



10 Cobargo Road GYMEA BAY NSW

3 1 1

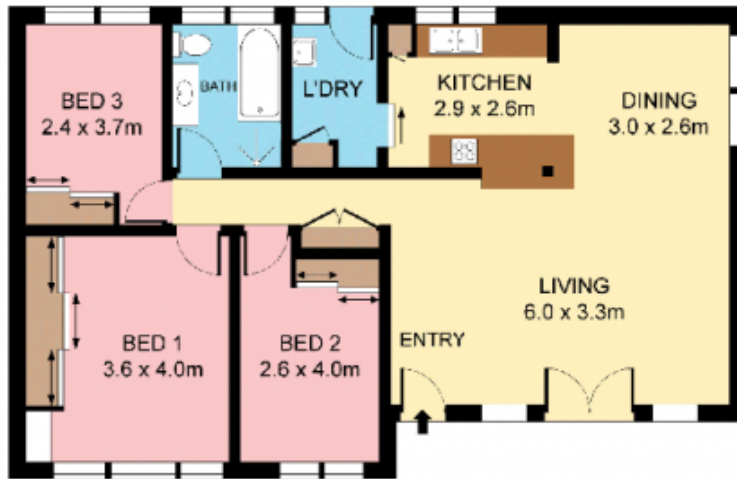
Fresh interiors, contemporary updates and sweeping leafy vistas over the Royal National Park make this single level residence an appealing choice for young executives, families and those looking for an easy care home in a prime enclave. Generous living spaces are complimented by the striking pool, wide deck, paved terrace and astro turf level lawn.

- Timber floors, skylights, light filled throughout
- Spacious living, separate dining, alfresco deck
- Modern kitchen, quality appliances, reverse air-con.
- Three spacious beds, BIRs, excellent storage
- Brand new bathroom, attic with retractable ladder
- Kids cubby, cul-de-sac, Kirrawee High catchment

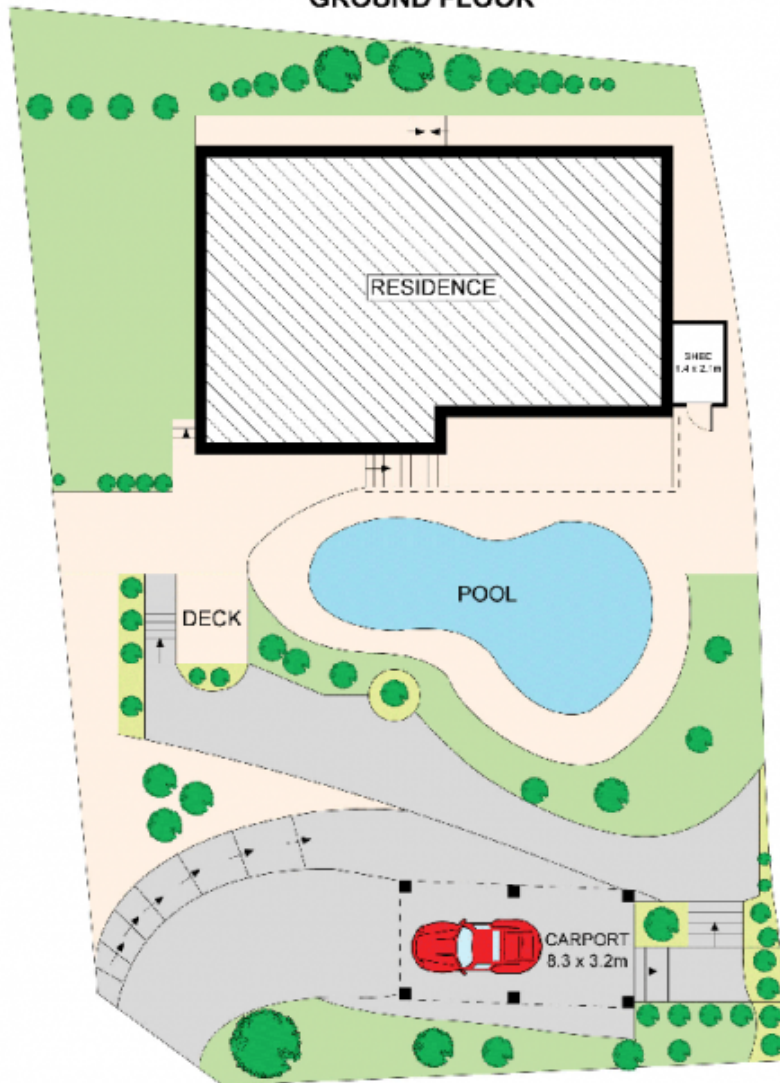
Type : House
Land Size : 569 sqm
View : <https://www.jreproperty.com.au/sale/nsw/sutherlandland/gymea-bay/residential/house/7488394>



Luke Jeffree
02 9540 2222



GROUND FLOOR



SITE PLAN (NOT TO SCALE)



Plans shown are for general information only and do not constitute any legal document or title. They are not to be used, amended, reproduced or otherwise used without the written consent of the author. If you are interested in the plans, please contact the author for more information.

