



**108 Manchester Road GYMEA NSW**

3 1 1

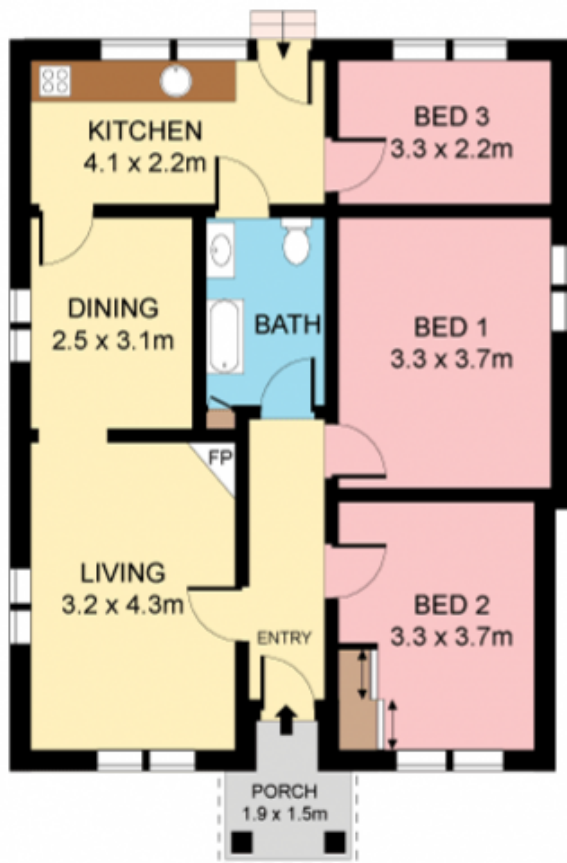
A diamond in the rough, this original cottage rests on an impressive 632sqm site of exceptionally usable level land and presents a wealth of opportunity and potential. Quiet and tranquil, set amongst quality homes and boasting a perfect N/E to rear aspect, its well placed a stroll to all of Gyneas fantastic amenities including shops, schools, rail and bus.

- Timber floors, high ceilings, original fireplace
- Separate lounge and dining, updated kitchen
- Two large bedrooms with BIRs plus 3rd bed
- Very deep fenced rear yard, large workshop
- Single lock up garage with extra storage area
- Peaceful, leafy street, explore the possibilities

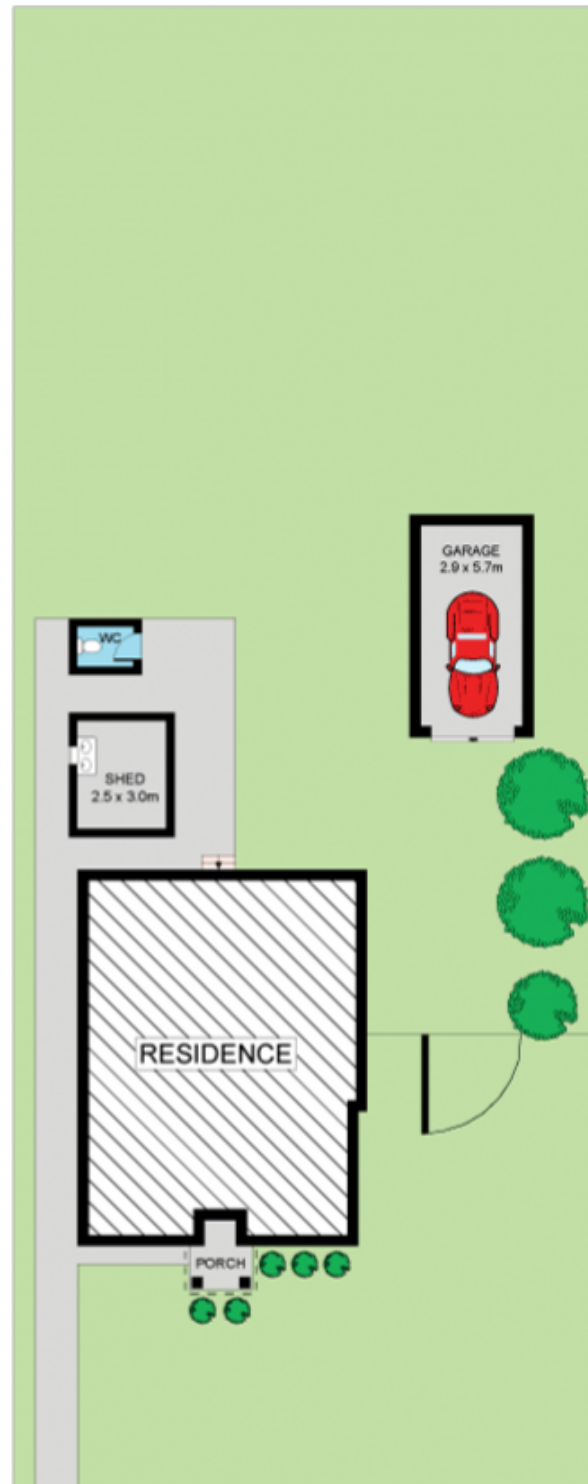
**Type** : House  
**Price** : \$ 793,000  
**Land Size** : 632 sqm  
**View** : <https://www.jreproperty.com.au/sale/nsw/sutherlandland/gymea/residential/house/7488395>



**Luke Jeffree**  
02 9540 2222



**GROUND FLOOR**



**SITE PLAN (NOT TO SCALE)**



Plans shown are for presentation purposes only and are not part of any legal document or title. They are subject to errors, omissions, inaccuracies and should not be used as a sole and accurate reference. Interested parties should make their own inquiries using independent sources.

108 MANCHESTER ROAD

GYMEA

