

8/52-56 Manchester Road GYMEA NSW

3 1 1

Architecturally designed to take full advantage of its north to rear aspect this very stylish townhouse offers the finest in easy care living. A flexible and spacious floor plan spreads across two levels and is enhanced by quality finishes and a sunny alfresco courtyard. Located for premium convenience, walk to the village, rail, bus and school.

- 1st time offered since new, timber floors, high ceilings
- Open plan living, bi-folds to private and spacious court
- Designer stone kitchen, quality stainless appliances
- Conservatory style roof over lounge, powder room, air-con.
- Three beds, two with BIRs, SLUG, intercom, security
- Electric blind over deck, prefect 1st home / downsizer

[For full version visit the website](https://www.jreproperty.com.au)

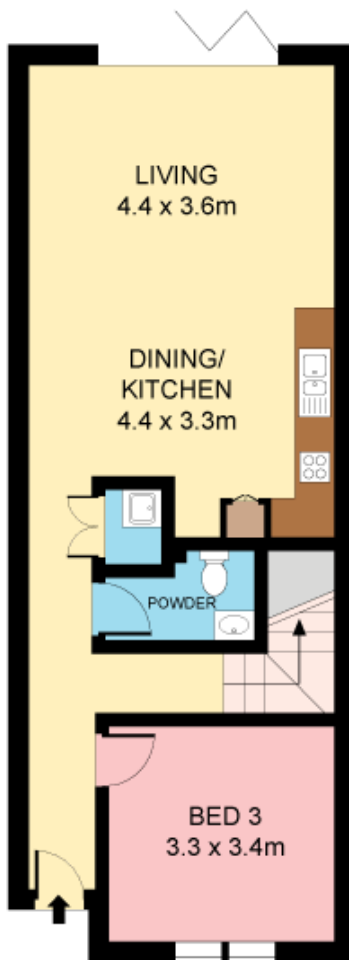
Type : Townhouse
Land Size : 156 sqm
View : <https://www.jreproperty.com.au/sale/nsw/sutherland/gymea/residential/townhouse/7488401>



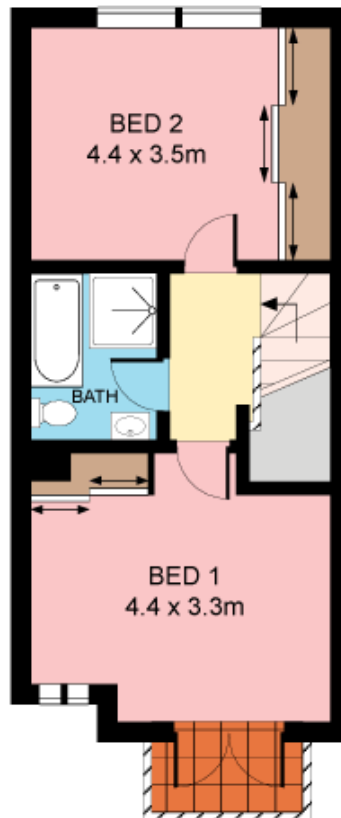
Dion Moon
02 9540 2222



GROUND FLOOR



GROUND FLOOR



FIRST FLOOR



**SITE PLAN
(NOT TO SCALE)**



Plans shown are for presentation purposes only and are not part of any legal document or title. They are subject to errors, omissions, inaccuracies and should not be used as a sole and accurate reference. Interested parties should make their own inquiries using independent sources.

