



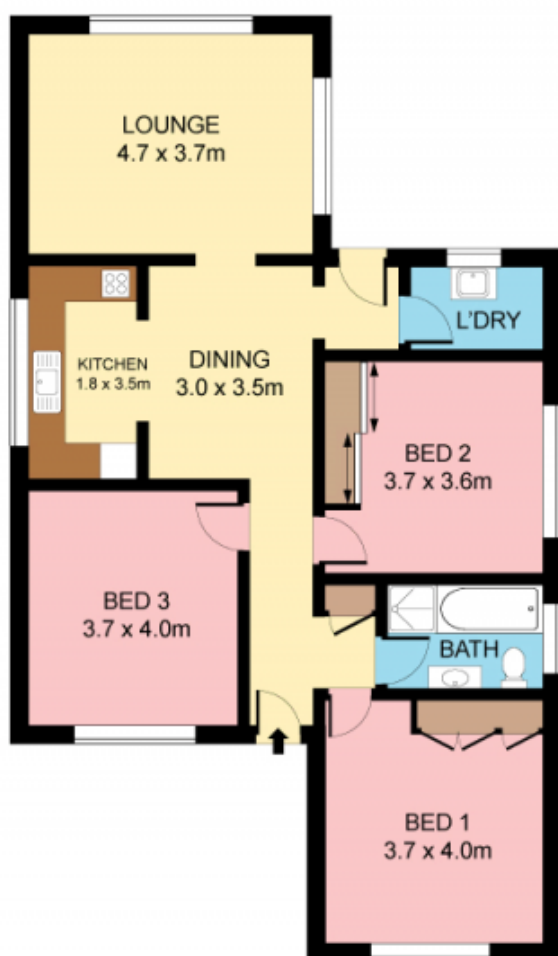
23 Pines Parade GYMEA NSW

3 1 1

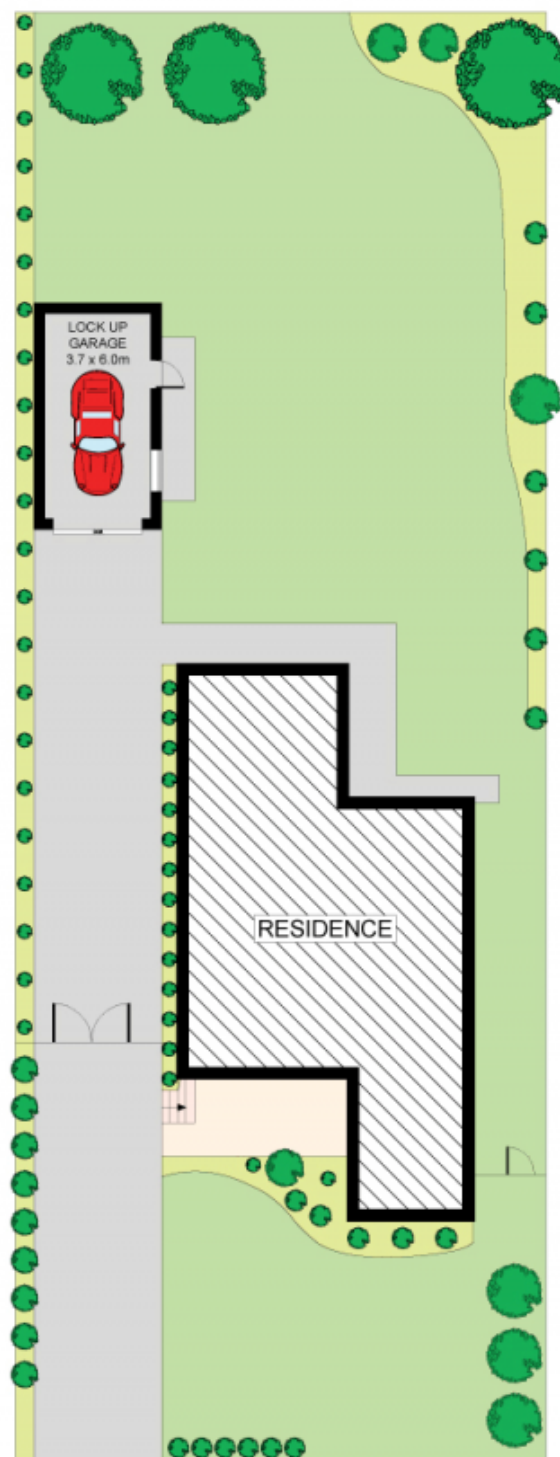
Occupying a premium 638sqm, sunny block in a quality street, this original brick bungalow offers exceptional buying into a sought after locale. Immaculately maintained throughout, it displays a versatile single level floor plan surrounded by generous flat lawns perfect for the children. Boasting outstanding potential its well placed close to shops, schools and rail.

- Front verandah, family living, dining
- Spacious & well maintained kitchen
- Good sized beds, one bed with robes
- Flexible lounge/3rd bedroom with air-con
- Over-sized lock up garage, laundry
- Ample off street parking, fenced yard

Type : House
Land Size : 638 sqm
View : <https://www.jreproperty.com.au/sale/nsw/sutherland/gyMEA/residential/house/7488402>



GROUND FLOOR



SITE PLAN (NOT TO SCALE)



Plans shown are for presentation purposes only and are not part of any legal document or title. They are subject to errors, omissions, inaccuracies and should not be used as a sole and accurate reference. Interested parties should make their own inquiries using independent sources.

