



19 Kingfisher Crescent GRAYS POINT NSW

4 2 2

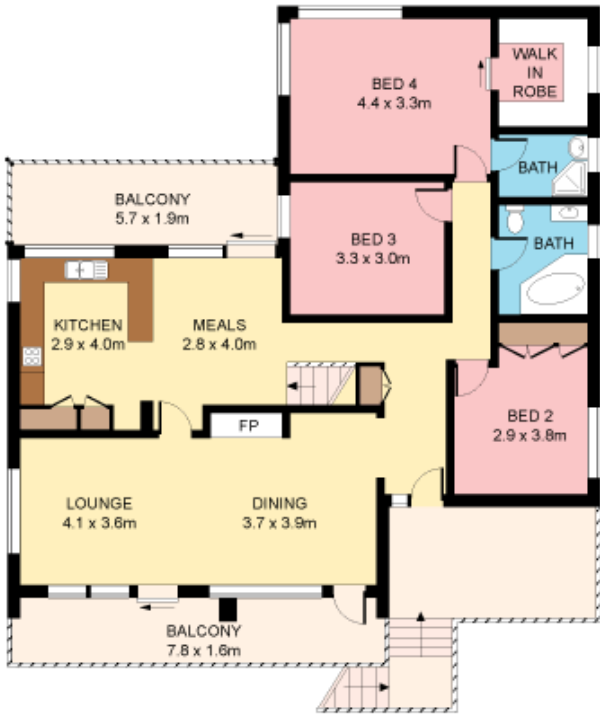
Idyllically placed with striking N/E facing vistas across North West Arm and Gymea Bay this quintessential family home offers all the requirements for superb family living. Set across two levels with multiple living areas, adaptable floor plan and pool, it enjoys a premium location within the Kirrawee High catchment, a stroll to parks, bus and bay.

Type : House
Land Size : 556 sqm
View : <https://www.jreproperty.com.au/sale/nsw/sutherland/grays-point/residential/house/7488404>

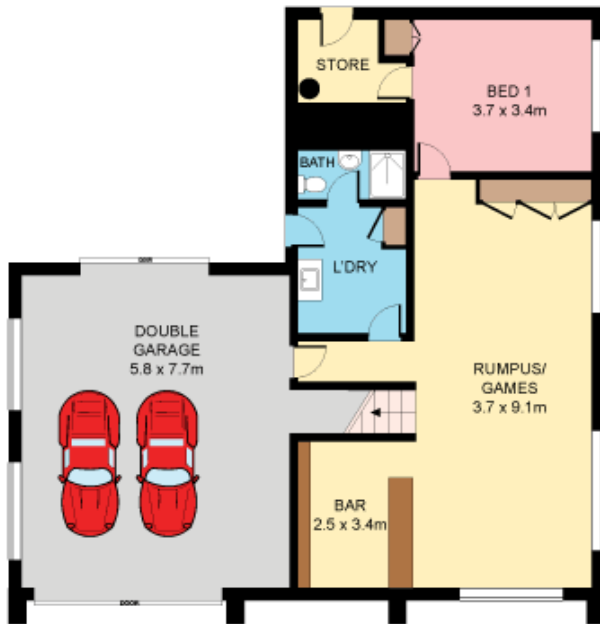
- Family living and dining adjoins the front verandah
- Modern kitchen overlooks the pool and nearby park
- Casual dining, rear deck, study nook, reverse air-con
- Rumpus with bar, bed & bath, ideal for in-laws/guest
- Master with ensuite shower, main bathroom with spa
- Poolside terrace, easy care, heated pool with spa



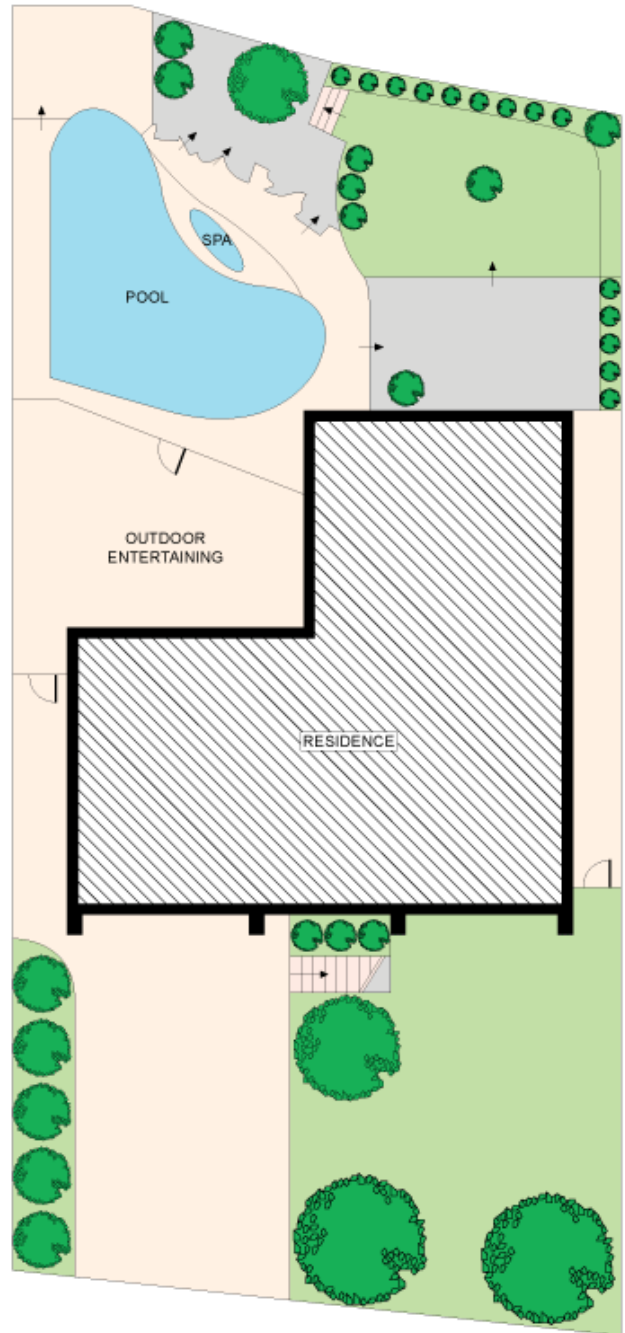
Luke Jeffree
02 9540 2222



FIRST FLOOR



GROUND FLOOR



Plans shown are for presentation purposes only and are not part of any legal document or title. They are subject to errors, omissions, inaccuracies and should not be used as a sole and accurate reference. Interested parties should make their own inquiries using independent sources.

