



**34 Vernon Avenue GYMEA BAY NSW**

3 2 2

Once a traditional bayside cottage, this bright and appealing family home has been transformed carefully incorporating its original charms yet offering all the requirements for fine family living. Contemporary appointments, sprawling living spaces and pool ensure a perfect lifestyle, quietly placed in a premium street a stroll to Gymea baths, bus and shops.

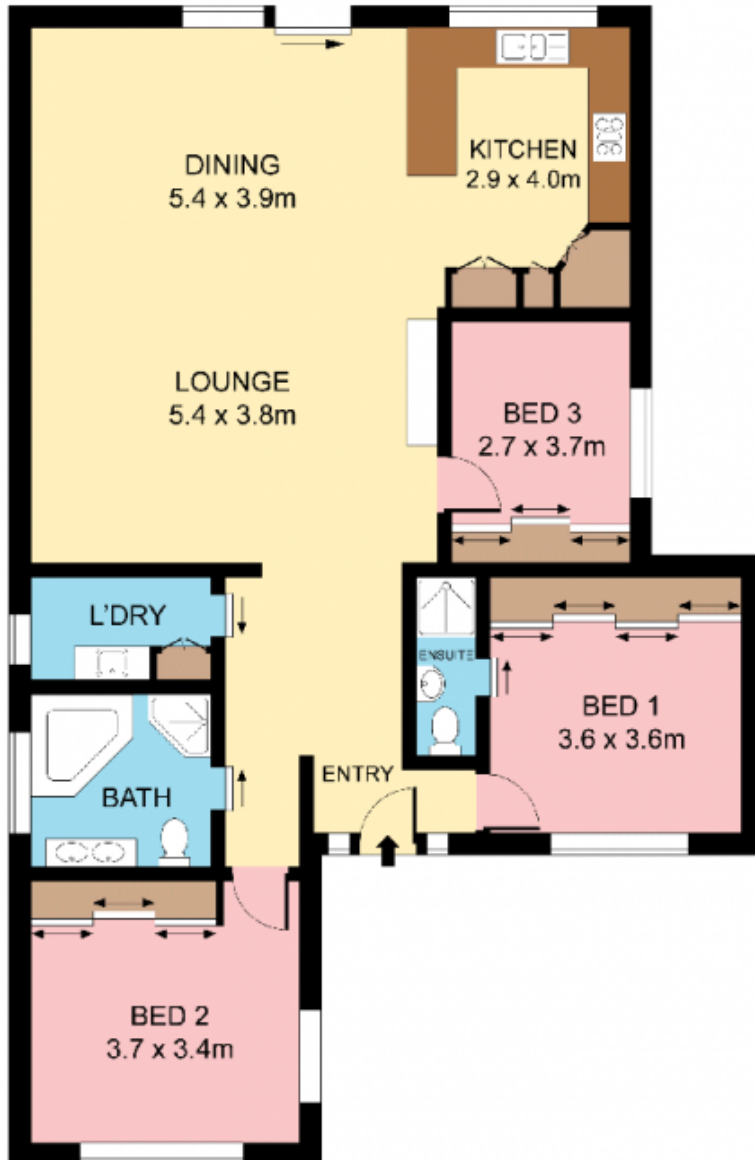
- Wide front verandah with all weather blinds
- Open plan living & dining, beamed ceilings
- Stylish kitchen with gas cook top, custom study nook
- Rear terrace with shade cover, poolside terrace
- 3 double beds, walls of robes, reverse air-con
- Oversized carport and garage, workshop
- Kirrawee High catchment, ready to enjoy

[For full version visit the website](https://www.jreproperty.com.au)

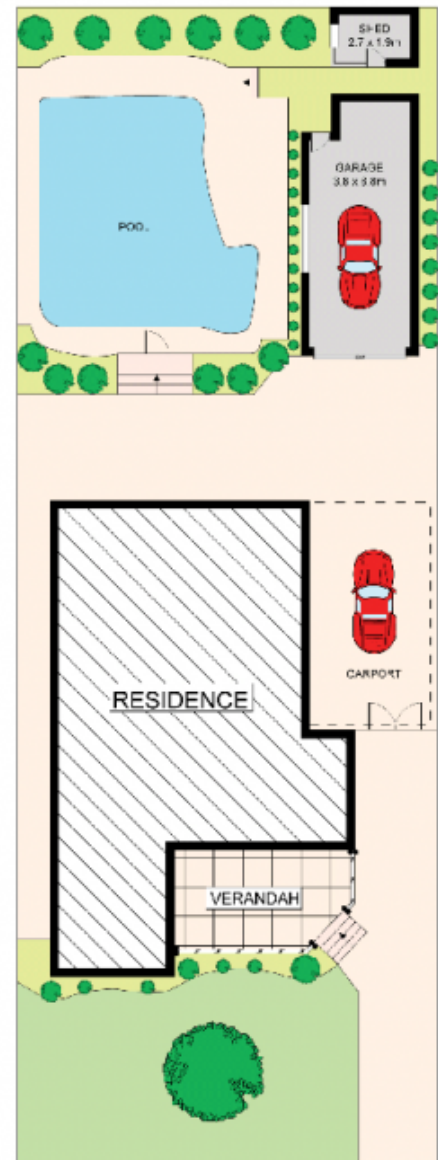
**Type** : House  
**Land Size** : 537 sqm  
**View** : <https://www.jreproperty.com.au/sale/nsw/sutherland/gyMEA-bay/residential/house/7488407>



**Luke Jeffree**  
**02 9540 2222**



**GROUND FLOOR**



**SITE PLAN (NOT TO SCALE)**



Plans shown are for presentation purposes only and are not part of any legal document or title. They are subject to errors, omissions, misstatements and should not be used as a sole and secure reference. Interested parties should make their own inquiries using independent resources.

**34 VERNON AVENUE**

**GYMEA BAY**

