



**11/2-6 Koorabel Avenue GYMEA NSW**

2 1 1

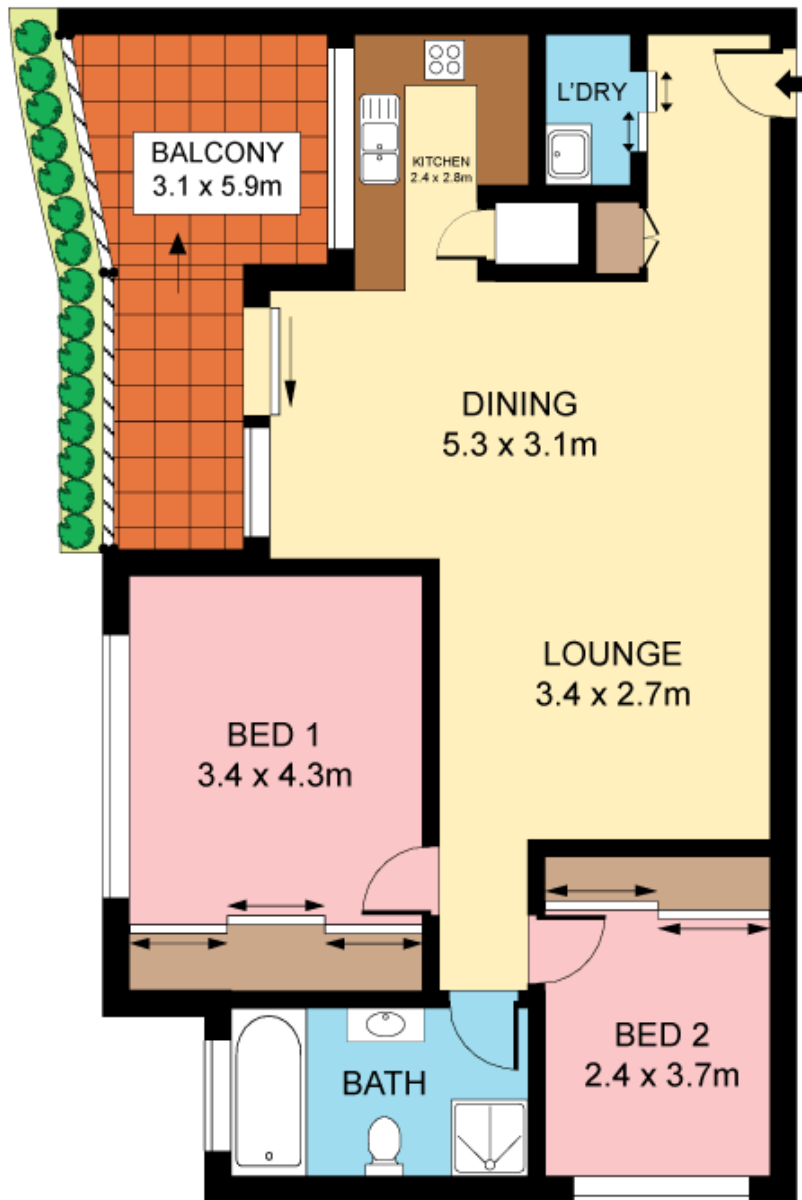
Relax and entertain in this spacious ground floor apartment, immaculately maintained and ready to enjoy. Benefiting from a perfect north aspect its spacious living areas are complimented by its very private and leafy alfresco courtyard and a sought after location in a peaceful pocket an easy stroll to Gymea villages boutique shops, eateries, bus and rail.

**Type** : Unit

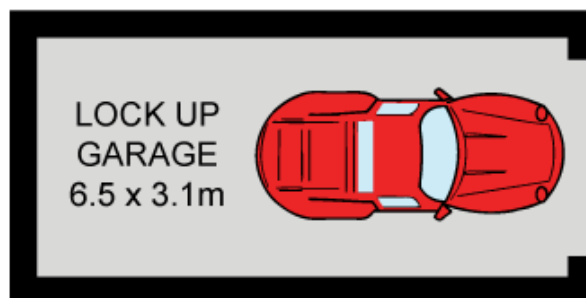
**View** : <https://www.jreproperty.com.au/sale/nsw/sutherland/gymea/residential/unit/7488410>

- Easy level access, quality security building
- Substantial living & dining, modern kitchen
- Very private paved alfresco court & garden
- Two good sized bedrooms both with BIRs
- Immaculate bathroom, excellent storage
- Reverse cycle air in living, over-sized LUG
- Exceptional starter/investor in prime locale

[For full version visit the website](#)



### RAISED GROUND FLOOR



Plans shown are for presentation purposes only and are not part of any legal document or title. They are subject to errors, omissions, inaccuracies and should not be used as a sole and accurate reference. Interested parties should make their own inquiries using independent sources.

