



289 Gymea Bay Road GYMEA BAY NSW

4 🏠 3 🚿 1 🚗

Resounding space both indoors and out, stylish contemporary updates and an elevated, peaceful setting in picturesque Gymea Bay define this outstanding family home. Resting on a generous 733sqm approx site with terraced level lawns and easy care gardens it effortlessly caters for all family requirements and boasts quick access to every amenity.

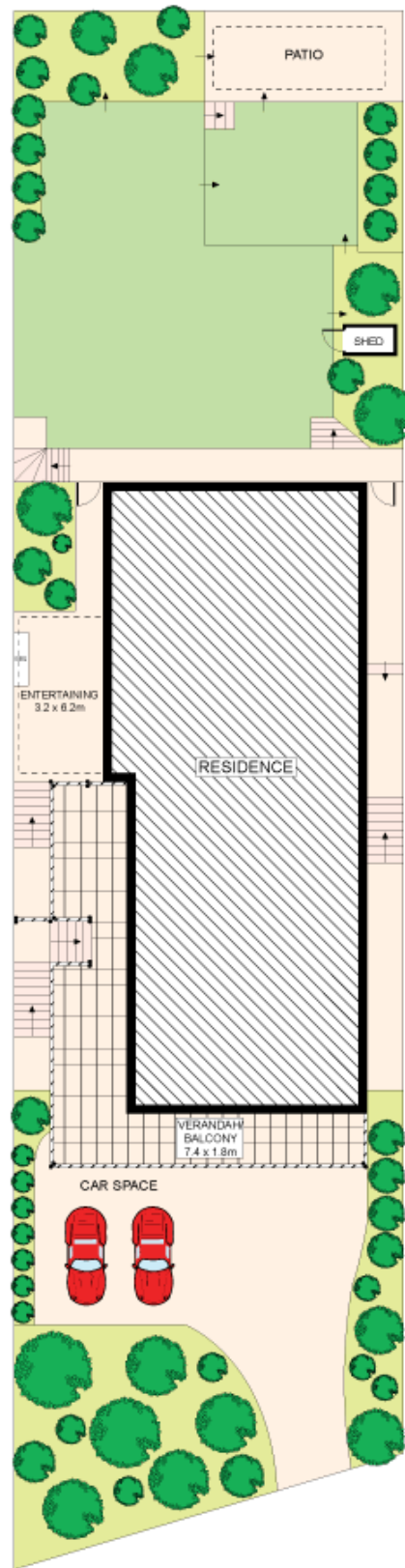
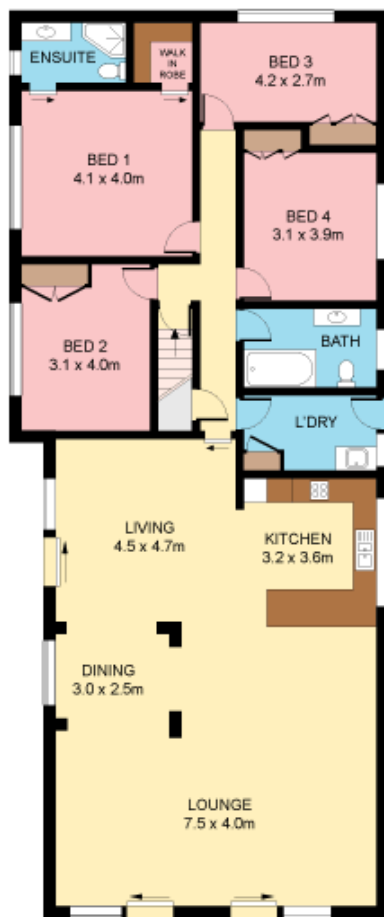
Type : House
Land Size : 733 sqm
View : <https://www.jreproperty.com.au/sale/nsw/sutherlandland/gymea-bay/residential/house/7488411>

- Bamboo flooring, fresh interiors, north aspect
- Exceptionally spacious lounge, living and dining
- Near new Caesarstone kitchen, induction cooktop
- 2 near new bathrooms with quality finishes
- Wide decks, alfresco terrace, large bedrooms, ensuite
- Versatile rumpus with bath & wet bar, study nook
- SLUG, storage, shed, Kirrawee High catchment

[For full version visit the website](#)



Dion Moon
02 9540 2222



Plans shown are for presentation purposes only and are not part of any legal document or title. They are subject to errors, omissions, inaccuracies and should not be used as a sole and accurate reference. Interested parties should make their own inquiries using independent sources.

