



10 Coonong Road GYMEA BAY NSW

3 1 2

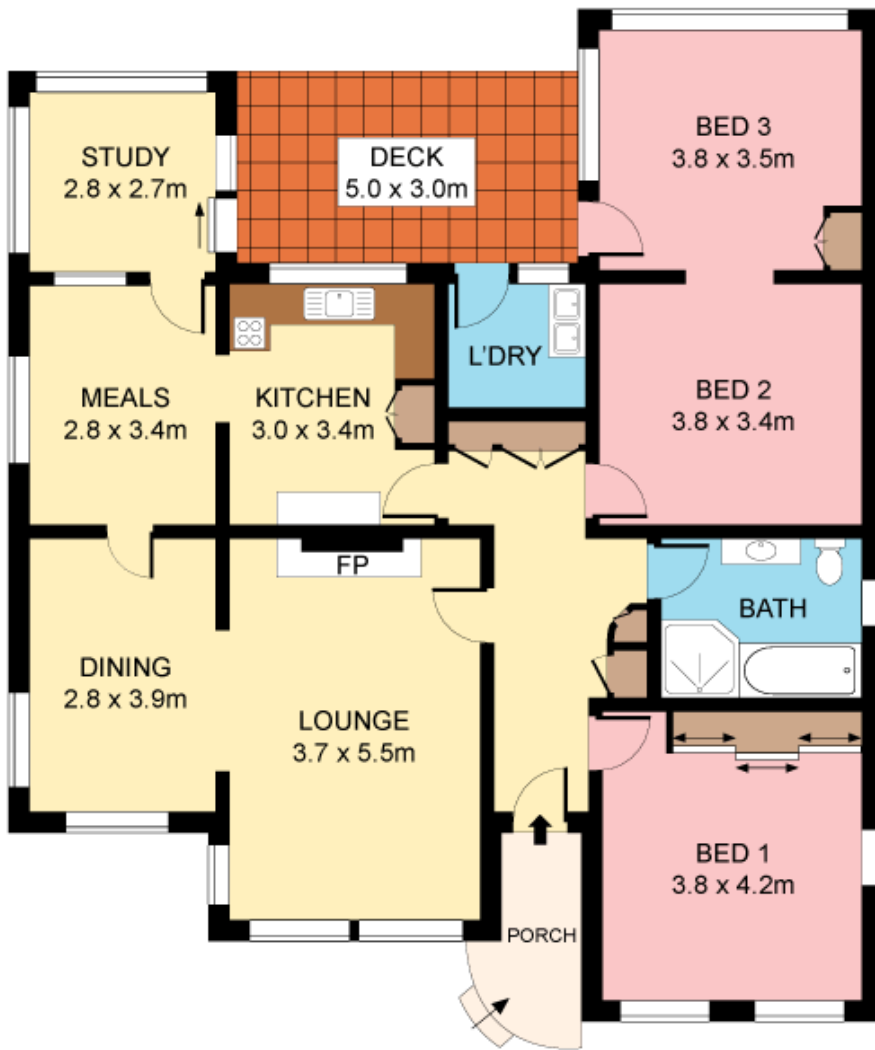
Built by the current owners and held since 1950, this original rare cast concrete home offers outstanding potential in a sought after location. Resting on a superb 916sqm with 16.1m frontage, it offers a wealth of choice; renovate and extend, remove and replace with a contemporary masterpiece or explore its development potential (STCA).

- Whisper quiet street, walk to rail, shops & school
- Flexible floor plan, lounge with fireplace, dining
- Casual dining, sunroom/study, sunny rear deck
- Original tidy kitchen and bath, large beds, BIR
- Deep rear yard, SLUG plus carport, outside toilet
- Suit entry level buyers, investors or developers

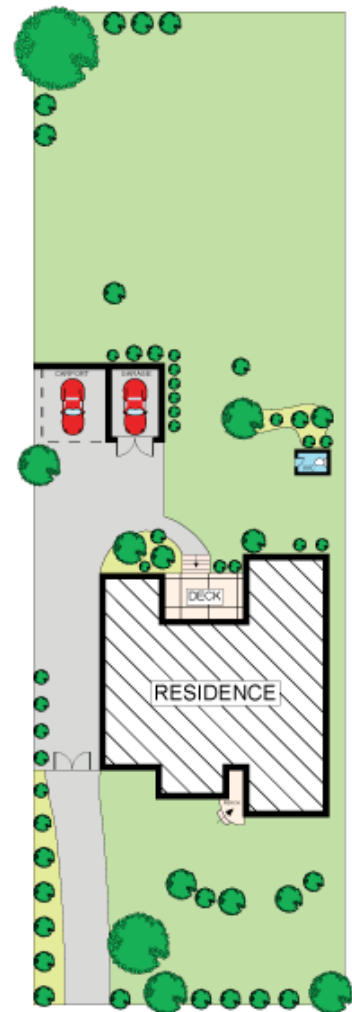
Type : House
Land Size : 916 sqm
View : <https://www.jreproperty.com.au/sale/nsw/sutherland/gymea-bay/residential/house/7488413>



Dion Moon
02 9540 2222



GROUND FLOOR



**SITE PLAN
(NOT TO SCALE)**



Plans shown are for presentation purposes only and are not part of any legal document or title. They are subject to errors, omissions, inaccuracies and should not be used as a sole and accurate reference. Interested parties should make their own inquiries using independent sources.

10 COONONG ROAD

GYMEA BAY