



**12 Molong Road GYMEA BAY NSW**

4 3 3

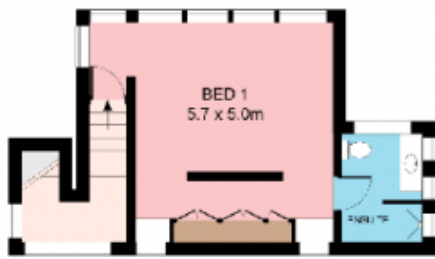
Architecturally unique, this striking residence pays homage to its privileged surrounds, enjoying magnificent bay panoramas from all levels down North West Arm. Striking lines, sweeping spaces and a practical floor plan with excellent separation ensures the finest in modern family living, further enhanced by its plethora of top of the line finishes.

- Timber floors, expanses of seamless glass
- Sprawling living, dining, sitting, huge deck
- Granite kitchen, Miele appliances, study
- Whole floor master with designer ensuite
- Media/living, 2 street entrance, cul-de-sac
- Superb gardens, level lawn, large terrace

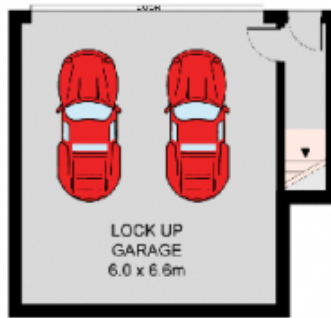
**Type** : House  
**Land Size** : 654 sqm  
**View** : <https://www.jreproperty.com.au/sale/nsw/sutherland/gymea-bay/residential/house/7488421>



**Luke Jeffree**  
02 9540 2222



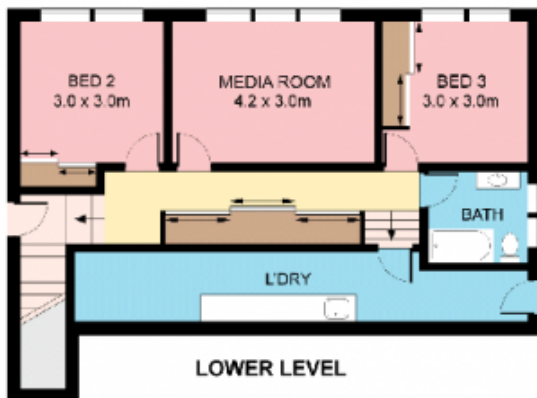
TOP LEVEL



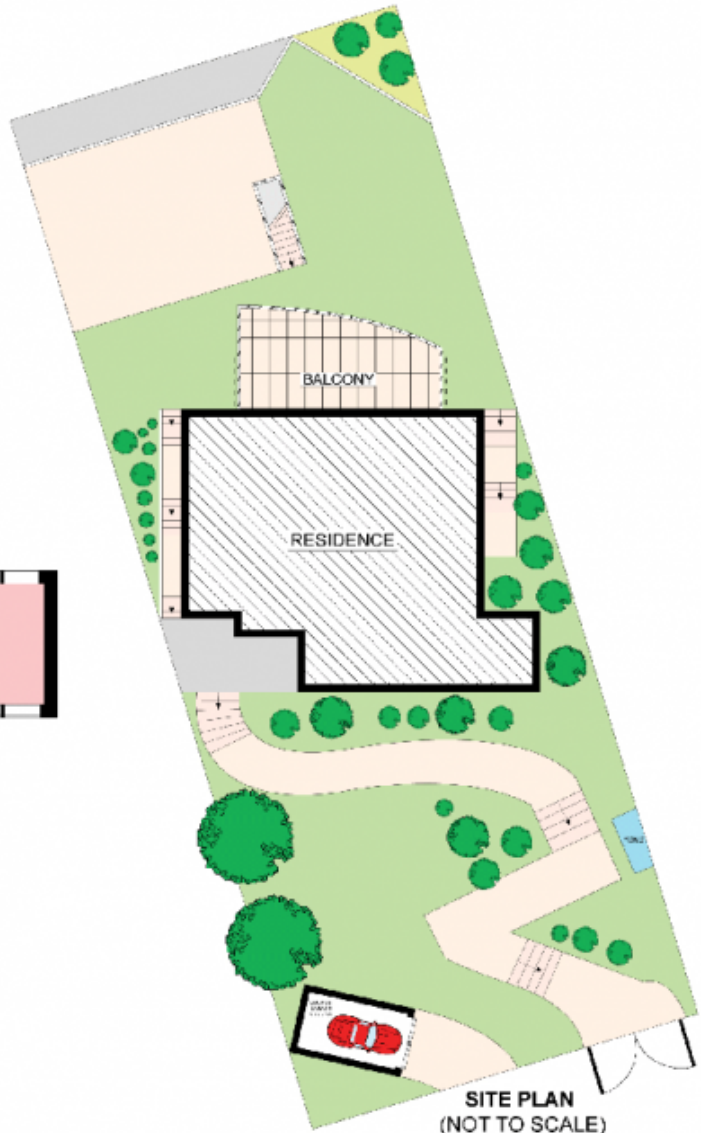
LOCK UP GARAGE  
6.0 x 6.6m



ENTRY LEVEL



LOWER LEVEL



SITE PLAN  
(NOT TO SCALE)



Plans shown are for informational purposes only and are not to be relied upon for any legal document. They are subject to errors, omissions, inaccuracies, and should not be used as a sole and exclusive reference. Interested parties should advise their own inquiries using independent surveys.



12 MOLONG ROAD

GYMEA BAY