



262 Gymea Bay Road GYMEA BAY NSW

3 1 2

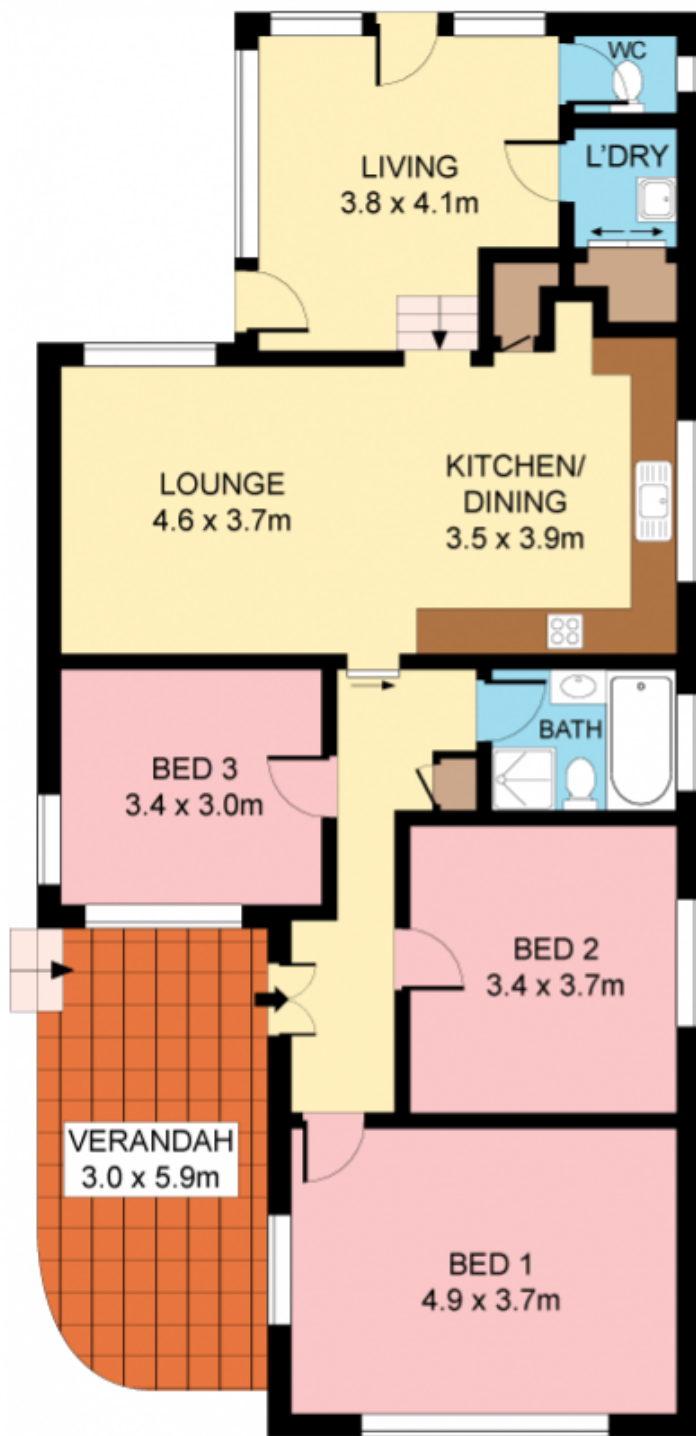
Perfectly positioned for the ultimate in family convenience, this single level beach bungalow presents a superb buying opportunity in a sought after locale. Presented in a well maintained near original condition and benefiting from an ideal N/E to rear aspect, it provides a perfect blank canvas comfortable to enjoy as is, renovate or replace.

- Fresh and bright throughout, timber floors
- Open plan lounge with large kitchen/dining
- Family living, powder room, updated bathroom
- Double beds, air-con, designer lighting, SLUG
- Alfresco terrace, private and secure grounds
- Carport, shed, fenced, walk to school, bus

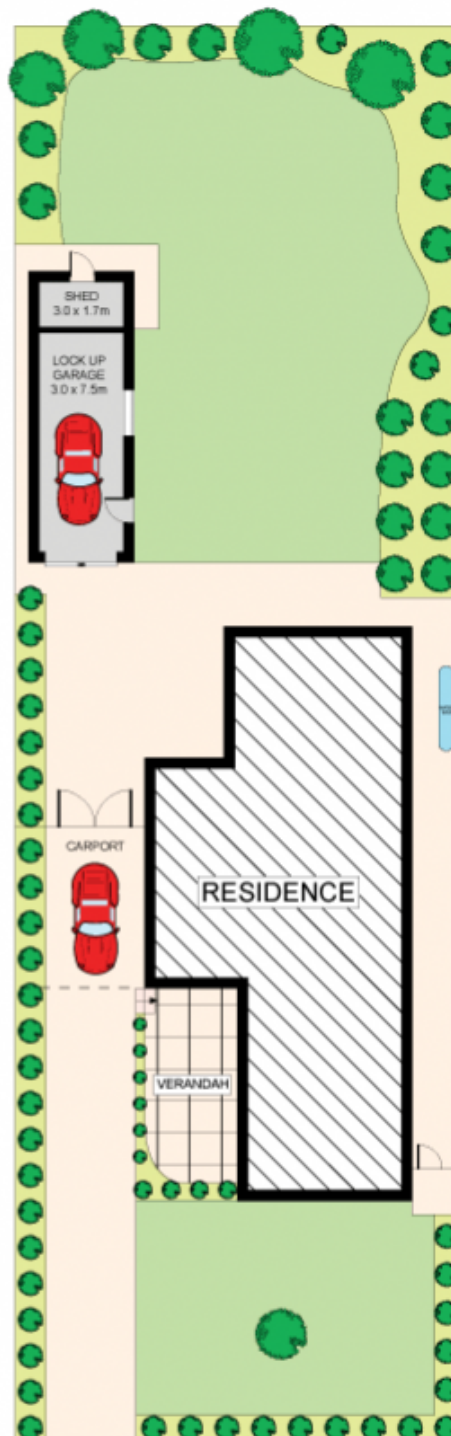
Type : House
Land Size : 607 sqm
View : <https://www.jreproperty.com.au/sale/nsw/sutherlandland/gymea-bay/residential/house/7488428>



Luke Jeffree
02 9540 2222



GROUND FLOOR



**SITE PLAN
(NOT TO SCALE)**



Plans shown are for presentation purposes only and are not part of any legal document or title. They are subject to errors, omissions, inaccuracies and should not be used as a sole and accurate reference. Interested parties should make their own inquiries using independent sources.

262 GYMEA BAY ROAD

GYMEA BAY

