



6/15 Hotham Road GYMEA NSW

3 2 2

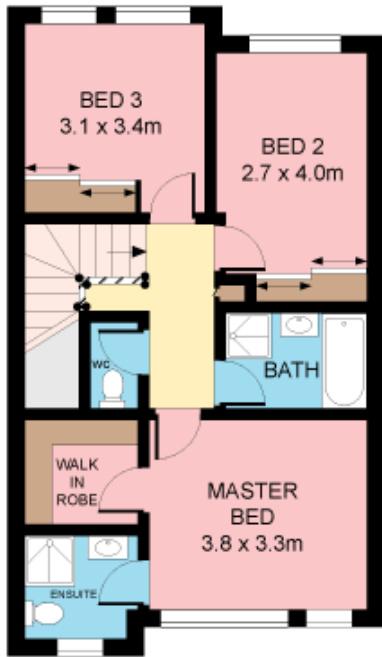
This fresh & contemporary residence provides a spectacular easy care environment with wide appeal for executives, downsizers & families. Just 5 years old & substantially proportioned it features multiple in/outdoor living areas, a private custom built Jacuzzi & sauna & quality finishes throughout.

- North facing and filled with natural light
- Spacious lounge adjoins the front courtyard
- Open plan eat-in kitchen and family living
- Rear alfresco terrace, powder, ducted air-con
- Three generous bedrooms, master with ensuite
- Internal DLUG, walk to rail, bus, schools

Type : Townhouse
Price : \$ 675,000
Land Size : 216 sqm
View : <https://www.jreproperty.com.au/sale/nsw/sutherland/gymea/residential/townhouse/7488431>



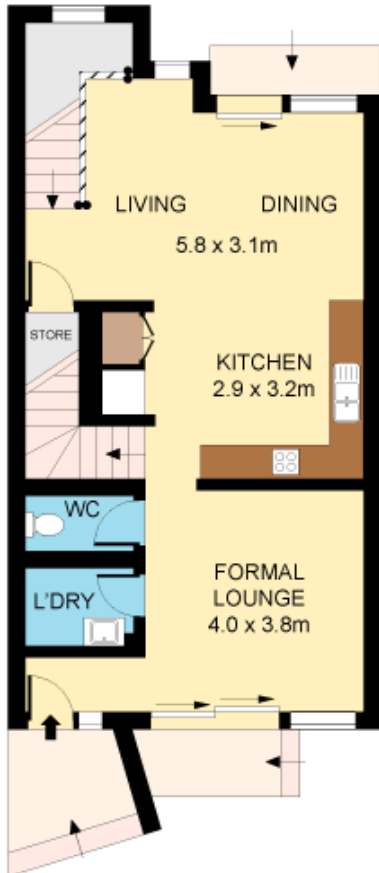
Luke Jeffree
02 9540 2222



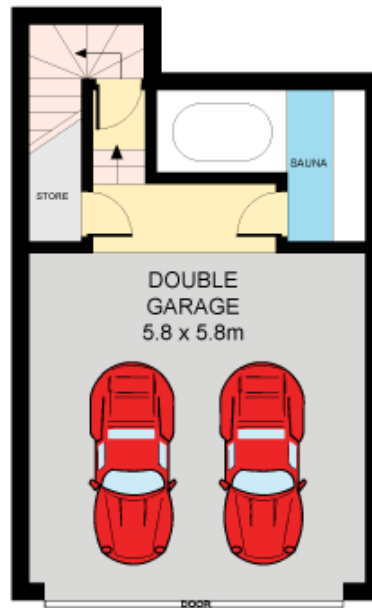
FIRST FLOOR



**SITE PLAN
(NOT TO SCALE)**



GROUND FLOOR



LOWER GROUND FLOOR



Plans shown are for presentation purposes only and are not part of any legal document or title. They are subject to errors, omissions, inaccuracies and should not be used as a sole and accurate reference. Interested parties should make their own inquiries using independent sources.

