



### 17 North West Arm Road GYMEA NSW

4 1 2

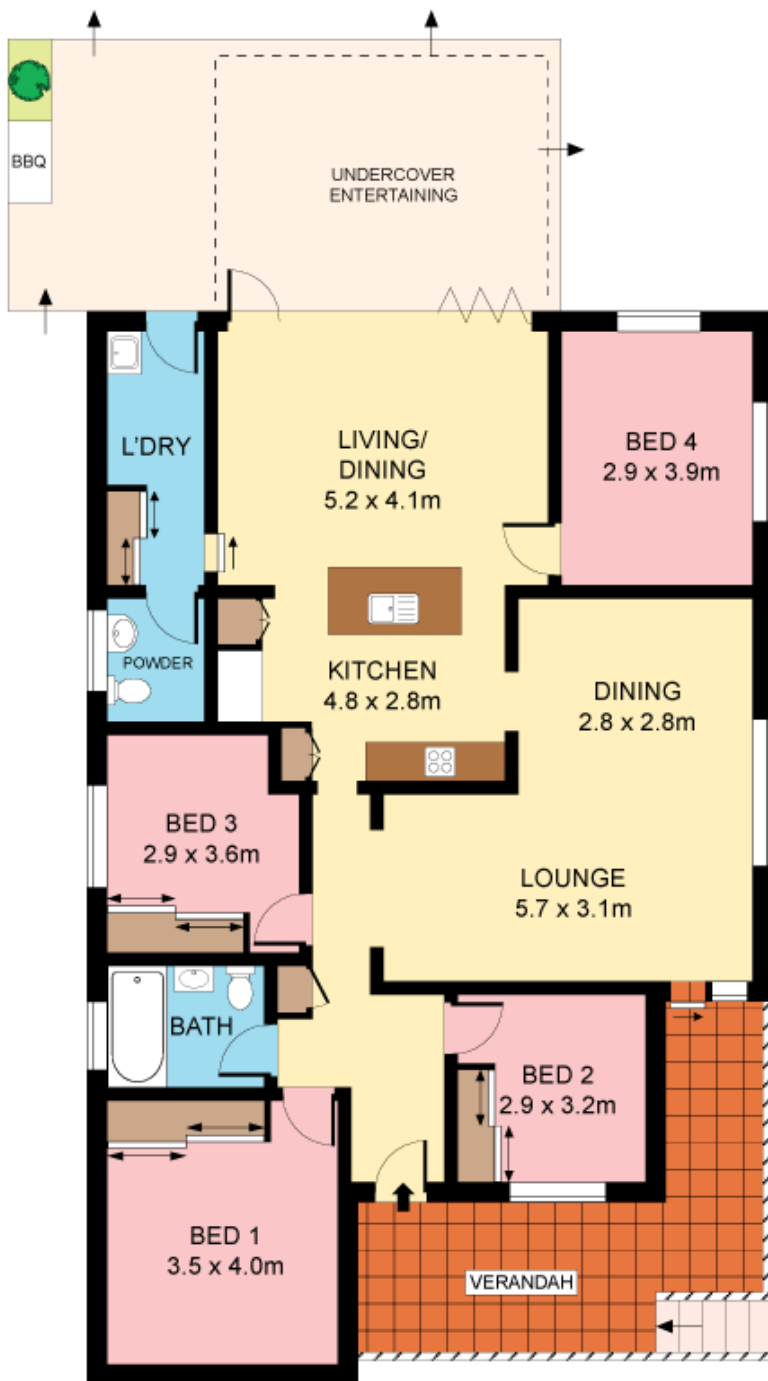
A contemporary renovation has rejuvenated this solidly built home, resulting in an inviting haven that is perfect for a young and growing family. Stretching across a single level and spilling out to superb alfresco spaces, a generous rear yard and pool, it offers outstanding easy care living and convenience walking distance to village shops, rail, bus and schools.

- Light filled open plan living, alfresco terrace
- Built in barbeque, quality stone kitchen
- Central breakfast bench, timber floors
- Generous formal living & separate dining
- Good-sized beds, garage with work area
- Powder/2nd toilet, carport, Kirrawee High catchment

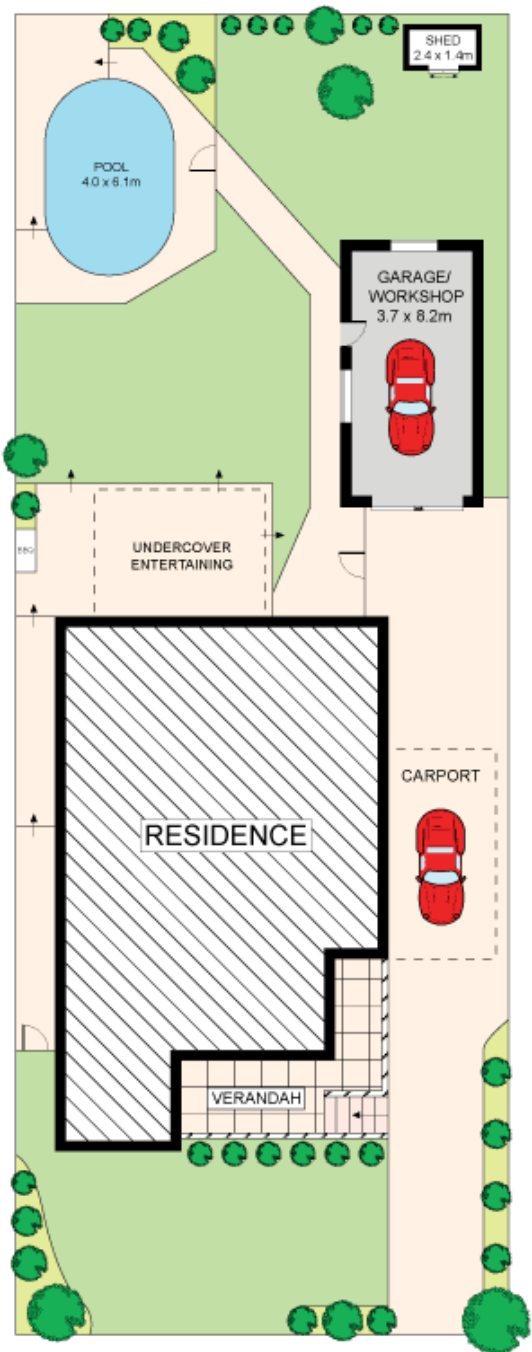
**Type** : House  
**Land Size** : 670 sqm  
**View** : <https://www.jreproperty.com.au/sale/nsw/sutherland/gymea/residential/house/7488432>



**Luke Jeffree**  
02 9540 2222



**GROUND FLOOR**



**SITE PLAN (NOT TO SCALE)**



Plans shown are for presentation purposes only and are not part of any legal document or title. They are subject to errors, omissions, inaccuracies and should not be used as a sole and accurate reference. Interested parties should make their own inquiries using independent sources.

17 NORTH WEST ARM ROAD

GYMEA