



**43/1-9 Warburton Street GYMEA NSW**

3 2 2

Bright, inviting and graced with a perfect due north aspect, enjoy an easy care lifestyle of ultimate convenience just footsteps to GyMEA village, rail and schools. Its family sized interiors are enhanced by the exceptional exteriors, featuring a rear alfresco terrace, level lawn on title and exclusive access to the adjoining fully fenced lawn and gardens.

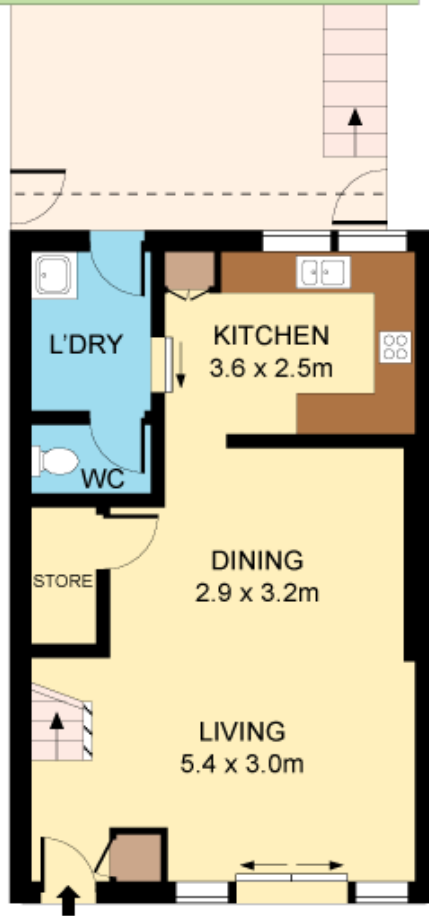
- Well presented, spacious living & dining
- Front fenced courtyard, reverse cycle air-con
- Large modern kitchen, paved rear terrace
- Powder room, easy rear access to DLUG
- Master with BIRs and renovated ensuite
- Outstanding family sized starter or investor

**Type** : Townhouse  
**Land Size** : 232 sqm  
**View** : <https://www.jreproperty.com.au/sale/nsw/sutherland/gyMEA/residential/townhouse/7488435>

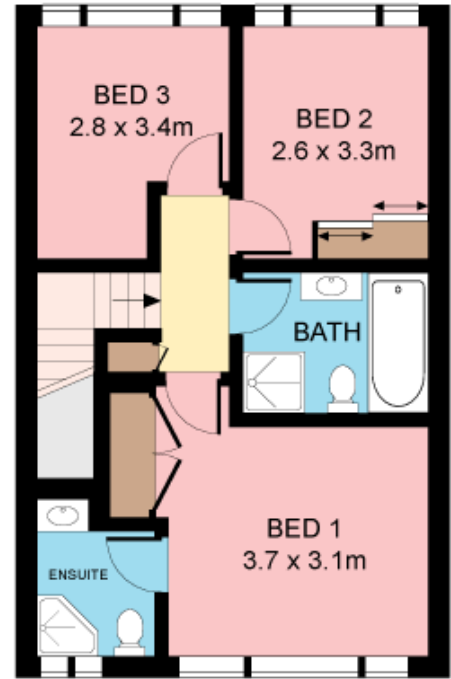


**Luke Jeffree**  
02 9540 2222

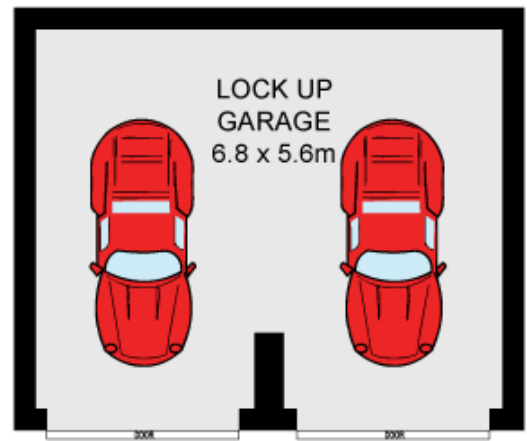
[For full version visit the website](https://www.jreproperty.com.au)



**ENTRY LEVEL**



**UPPER LEVEL**



Plans shown are for presentation purposes only and are not part of any legal document or title. They are subject to errors, omissions, inaccuracies and should not be used as a sole and accurate reference. Interested parties should make their own inquiries using independent sources.

43/1-9 Warburton Street

GYMEA

