



4/4 Manchester Road GYMEA NSW

3 2 2

Focused on a family friendly, easy care lifestyle, this impressive freestanding townhouse offers more than most. Peacefully placed in a stylish boutique complex, its generosity of space is mirrored outdoors with an expansive alfresco terrace and private lawn area. Pet friendly, its position is unparalleled an easy stroll to the village, rail and school.

Type : Townhouse
Land Size : 189 sqm
View : <https://www.jreproperty.com.au/sale/nsw/sutherland/gyMEA/residential/townhouse/7488437>

- Bright open plan living, dining & kitchen
- Quality stone tops & steel appliances
- Large covered terrace, powder room
- Study nook, under stair storage area
- Master with ensuite, internal laundry, air-con
- DLUG with internal access, 1 of just 14

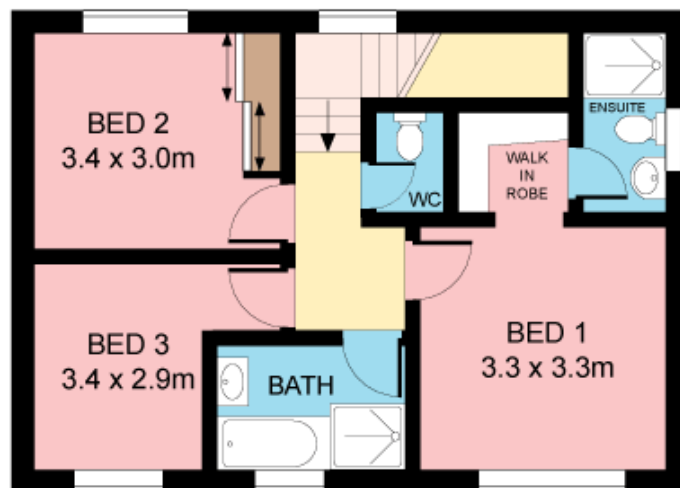


Luke Jeffree
02 9540 2222

[For full version visit the website](https://www.jreproperty.com.au)



GROUND FLOOR



FIRST FLOOR



Plans shown are for presentation purposes only and are not part of any legal document or title. They are subject to errors, omissions, inaccuracies and should not be used as a sole and accurate reference. Interested parties should make their own inquiries using independent sources.