



**1/81 Ellesmere Road GYMEA BAY NSW**

4 2 2

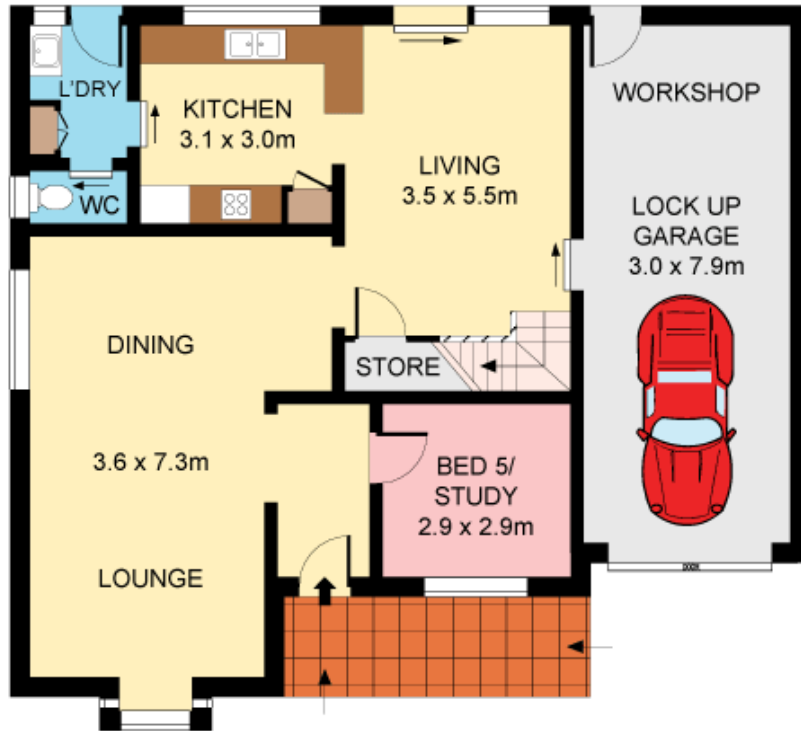
Perfectly balancing abundant space with an easy care nature, this sophisticated duplex meets all the demands of a modern family. Stretching across two spacious levels and wrapped in terraces and low maintenance private gardens it offers the perfect haven from a busy lifestyle, north facing to rear and located in a highly sought after area within Gymea Bay.

- Generous family living, spacious dining, study
- Near new stunning stone kitchen, parquet floors
- Casual living/dining, wide alfresco terrace, powder room
- 4 large bedrooms, main with ensuite & WIR
- Back to base alarm, ducted air-con, 1? car LUG
- Superbly presented, Kirrawee High catchment

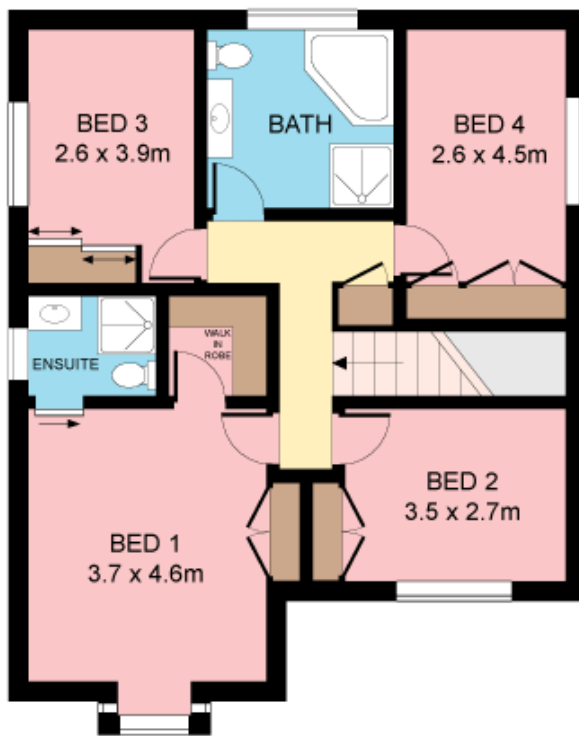
**Type** : Semi Detached  
**Land Size** : 314 sqm  
**View** : <https://www.jreproperty.com.au/sale/nsw/sutherlandland/gymea-bay/residential/semi-detached/7488439>



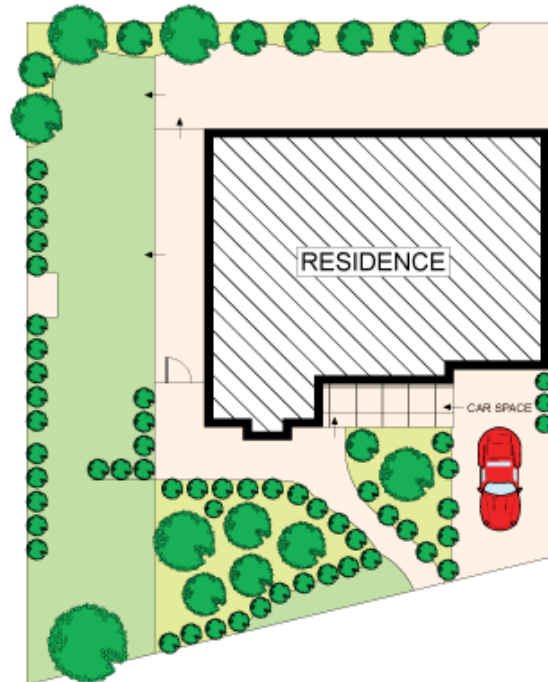
**Luke Jeffree**  
02 9540 2222



**GROUND FLOOR**



**FIRST FLOOR**



**SITE PLAN  
(NOT TO SCALE)**



Plans shown are for presentation purposes only and are not part of any legal document or title. They are subject to errors, omissions, inaccuracies and should not be used as a sole and accurate reference. Interested parties should make their own inquiries using independent sources.