

2/15-17 Koorabel Avenue GYMEA NSW

3 **2** **2**

Expansively sized and stylishly appointed this ground floor garden apartment boasts family sized dimensions with a seamless alfresco flow. Sweeping living areas spill out to the leafy garden spaces providing a tranquil environment year round. Placed to the rear of the attractive security building, its supremely located just metres to the village, school and rail.

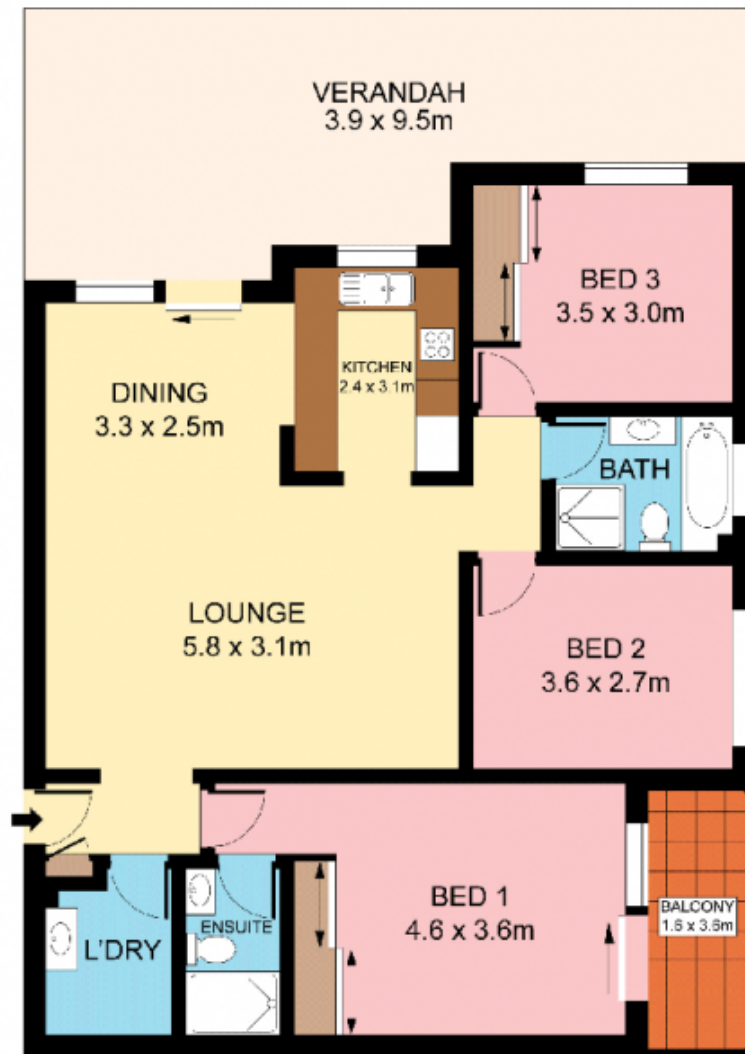
- Expansive open plan living & dining
- Large alfresco terrace, retractable blind
- Modern gas kitchen, study nook, air-con.
- Private master with ensuite & balcony
- Generous bedrooms, two with robes
- Secure DLUG, fine easy care living

Type : Unit
Land Size : 161 sqm
View : <https://www.jreproperty.com.au/sale/nsw/sutherlandland/gymea/residential/unit/7488454>

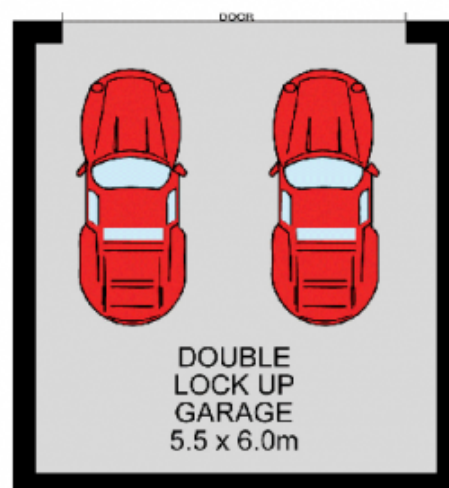


Luke Jeffree
02 9540 2222

[For full version visit the website](https://www.jreproperty.com.au)



GROUND FLOOR



Plans shown are for presentation purposes only and are not for or any legal document, or use. They are subject to errors, omissions, inaccuracies and should not be used as a sole and accurate reference. Interested parties should make their own inquiries using independent sources.

2/15-17 Koorabel Avenue

GYMEA