



5/46-48 Talara Road GYMEA NSW

2 1 1

Enjoying a leafy and peaceful setting on the ground floor of a quality modern building, this fresh and inviting apartment displays impressive proportions, more in keeping with a freestanding home. Enjoying spaces to entertain both inside and out, its exceptionally well located just an easy stroll to the village, rail, bus and school.

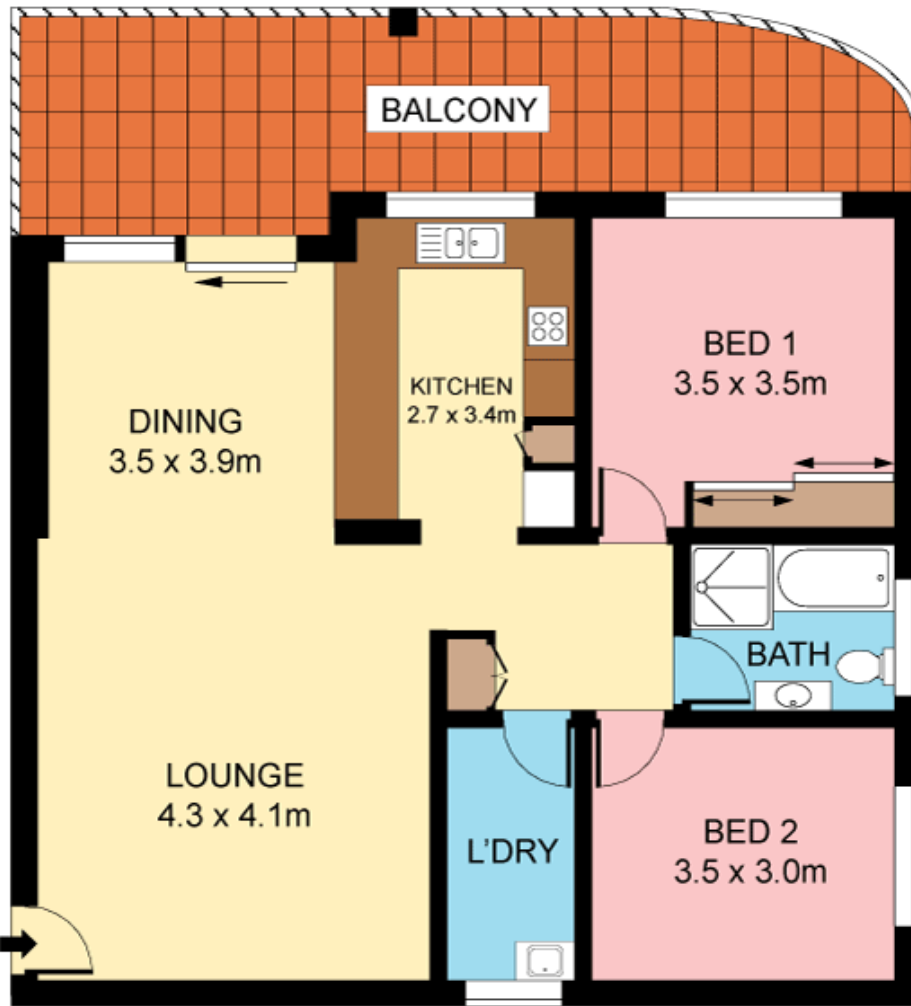
- Sweeping open plan living & dining rooms-
- Alfresco terrace set in garden surrounds
- Substantial kitchen with long breakfast bar
- 2 well proportioned beds, main with robes
- Large internal laundry, plantation shutters
- LUG, intercom entry, ideal 1st home/investor

Strata levies: \$620 per quarter
[For full version visit the website](#)

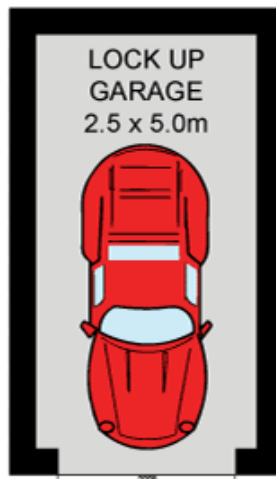
Type : Unit
Land Size : 113 sqm
View : <https://www.jreproperty.com.au/sale/nsw/sutherlandland/gymea/residential/unit/7488455>



Dion Moon
02 9540 2222



GROUND FLOOR



Plans shown are for presentation purposes only and are not part of any legal document or title. They are subject to errors, omissions, inaccuracies and should not be used as a sole and accurate reference. Interested parties should make their own inquiries using independent sources.