

2/1-3 Hunter Street KIRRAWEE NSW

3 2 2

One of just seven beautifully appointed townhouses, this stylish residence affords premium comfort with its light flooded interiors, substantial floor plan and preferred due north aspect. Located in a mostly owner occupied complex its sits within the Kirrawee High catchment just a stroll to the school and close to all amenities.

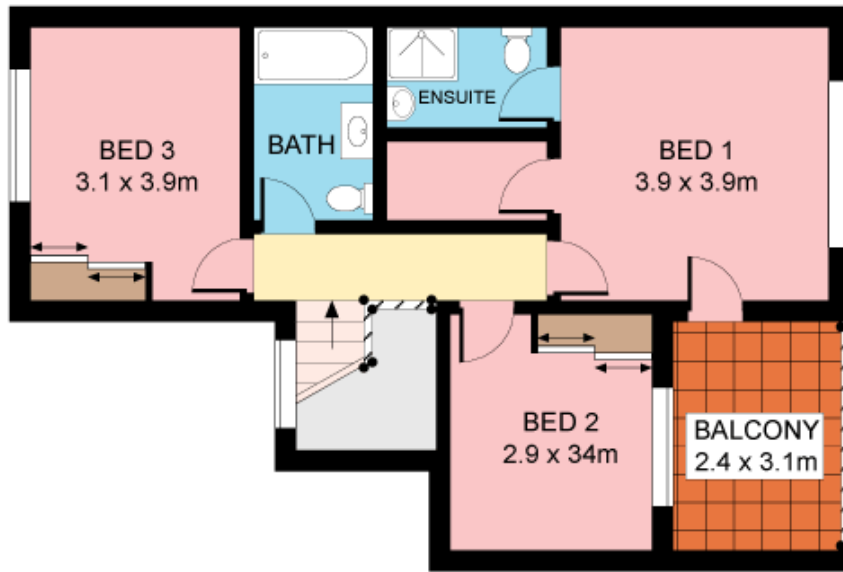
- 10ft high ceilings provide ultimate space
- Expansive open plan living and dining
- Private courtyard with covered alfresco terrace
- Stone gourmet kitchen, powder room
- Master with ensuite and deck, DLUG
- Walk to village eateries, close to rail

Type : Townhouse
Land Size : 196.2 sqm
View : <https://www.jreproperty.com.au/sale/nsw/sutherlandland/kirrawee/residential/townhouse/7488466>

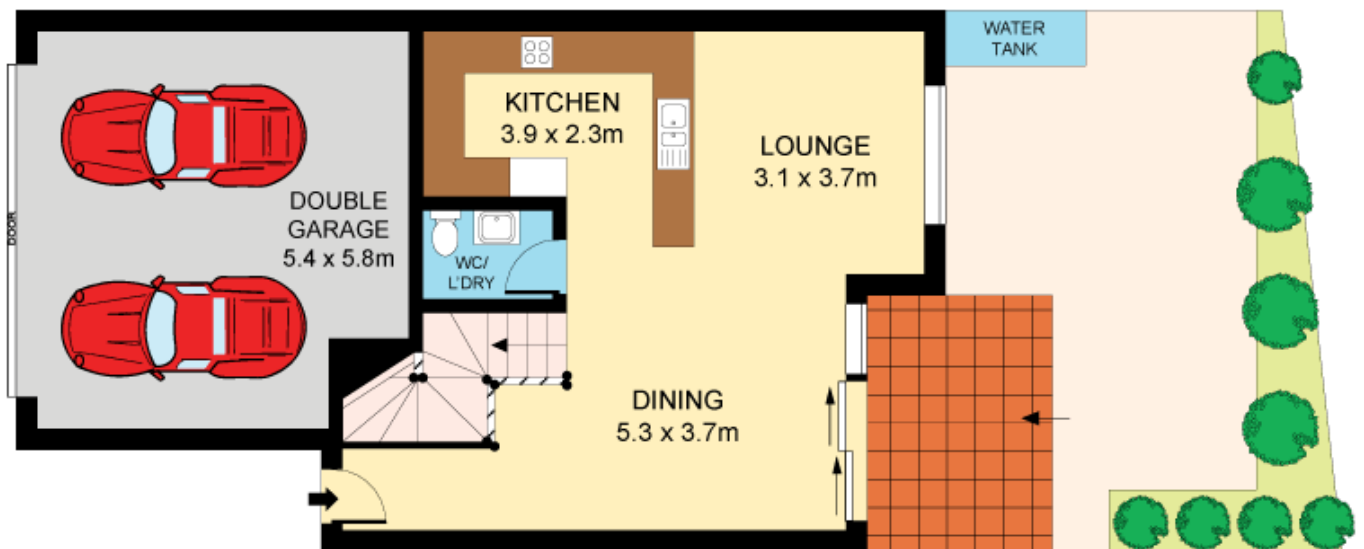


Luke Jeffree
02 9540 2222

[For full version visit the website](https://www.jreproperty.com.au)



FIRST FLOOR



GROUND FLOOR



Plans shown are for presentation purposes only and are not part of any legal document or title. They are subject to errors, omissions, inaccuracies and should not be used as a sole and accurate reference. Interested parties should make their own inquiries using independent sources.

2/1-3 HUNTER STREET

KIRRAWEE