



1/1-3 Second Avenue GYMEA BAY NSW

3 2 2

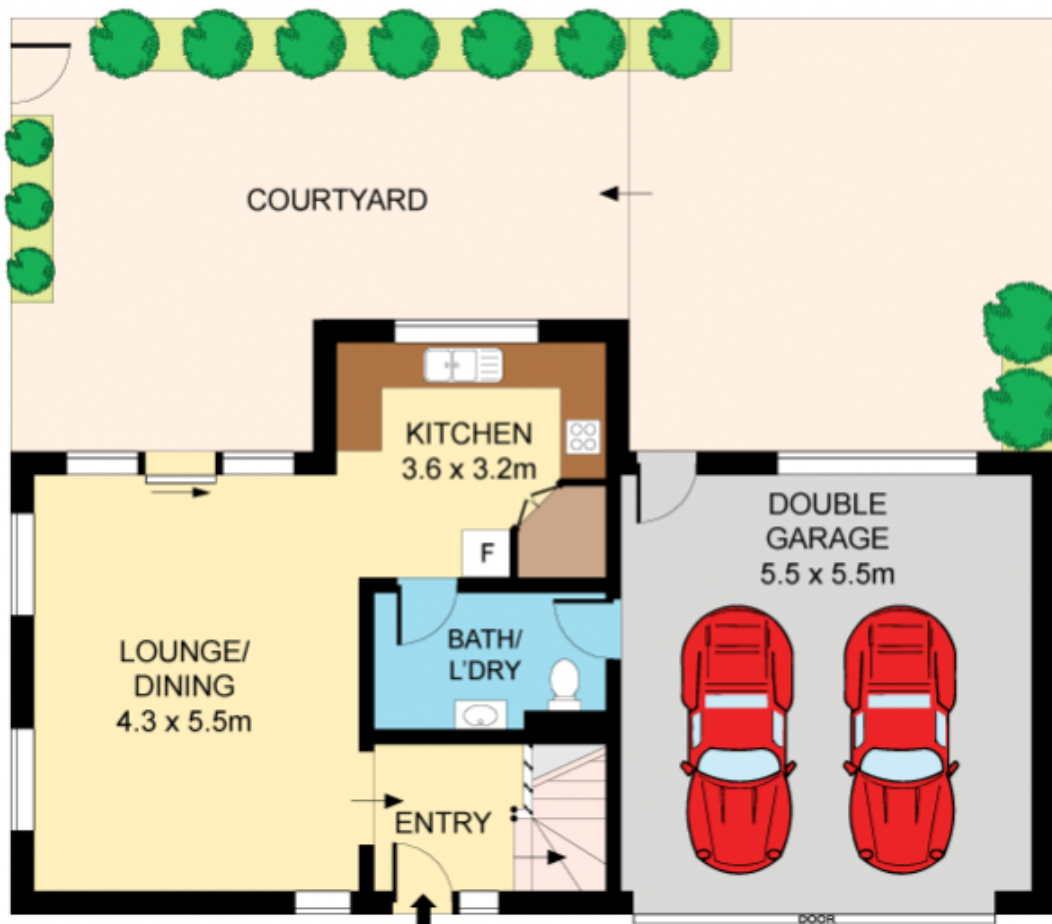
Perfectly appointed for contemporary indoor/outdoor living and entertaining, this elegant and immaculate townhouse provides an easy care lifestyle of comfort and convenience. Graced with light filled interiors and a spectacular courtyard, it sits within boutique Marrakai in a peaceful street setting within the sought after Kirrawee High catchment.

- Spacious open plan living and dining
- Exceptional & private alfresco courtyard
- Quality granite kitchen, ducted air-con
- Large beds, palatal main with ensuite
- Powder room, DLUG with internal entry
- Ample storage, striking garden setting

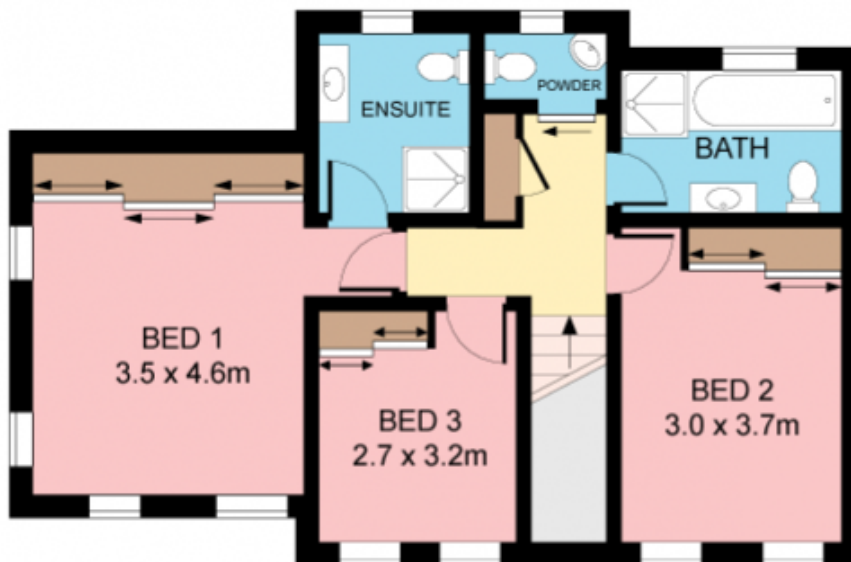
Type : Townhouse
Land Size : 208 sqm
View : <https://www.jreproperty.com.au/sale/nsw/sutherland/gymea-bay/residential/townhouse/7488468>



Luke Jeffree
02 9540 2222



GROUND FLOOR



FIRST FLOOR



Plans shown are for presentation purposes only and are not part of any legal document or title. They are subject to errors, omissions, inaccuracies and should not be used as a sole and accurate reference. Interested parties should make their own inquiries using independent sources.

1/1-3 SECOND AVENUE

GYMEA BAY