



**11 Milner Avenue KIRRAWEE NSW**

3 1 3

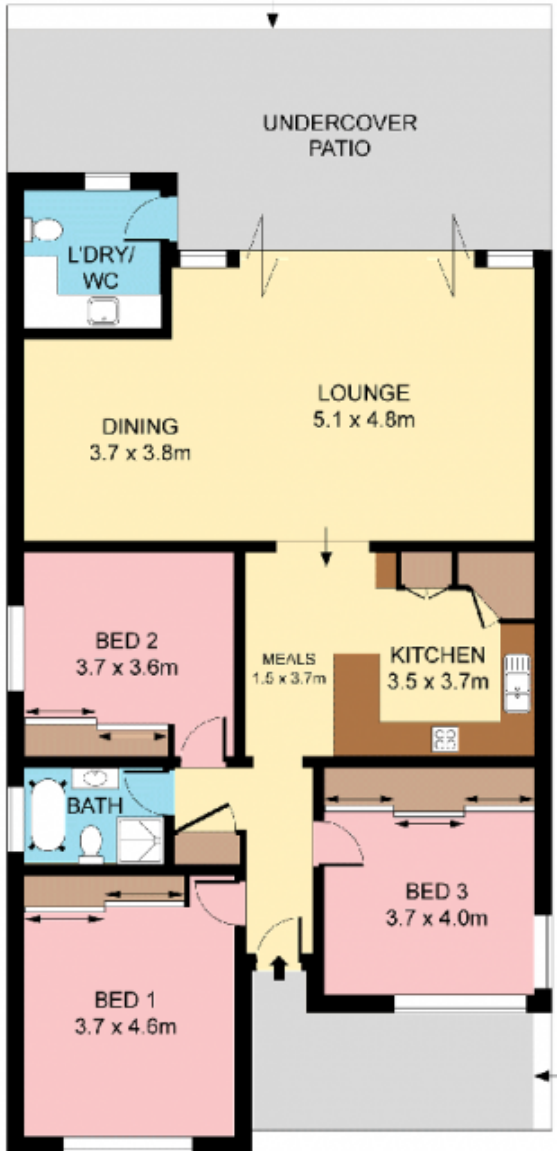
Beautifully renovated throughout featuring a level of inclusion rarely found, this transformed bungalow provides the ultimate in comfort. From its C-bus automation to its superb outdoor spaces with pool, its ready to move in and enjoy with absolutely nothing further to do. Resting within the Kirrawee High catchment, this unique home will impress.

- Shadowline ceilings, timber floors, air-con
- Open plan living, dining and kitchen
- Vast alfresco terrace, heated decked pool
- Bose sound system, 3 generous bedrooms
- Versatile garage/workshop, powder room
- Carport, additional parking, level yard

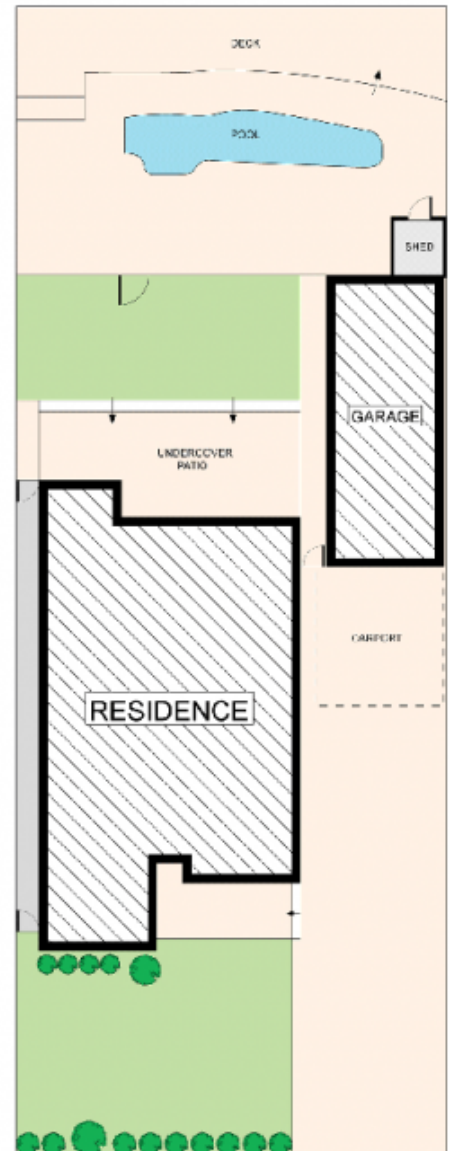
**Type** : House  
**Land Size** : 645 sqm  
**View** : <https://www.jreproperty.com.au/sale/nsw/sutherlandland/kirrawee/residential/house/7488471>



**Luke Jeffree**  
02 9540 2222



**GROUND FLOOR**



**SITE PLAN  
(NOT TO SCALE)**



Plans shown are for presentational purposes only and are not part of any legal document or title. They are subject to errors, omissions, inaccuracies and should not be used as a sole and accurate reference. Interested parties should make their own inquiries using independent sources.

