



33 Avenel Road GYMEA BAY NSW

3 2 2

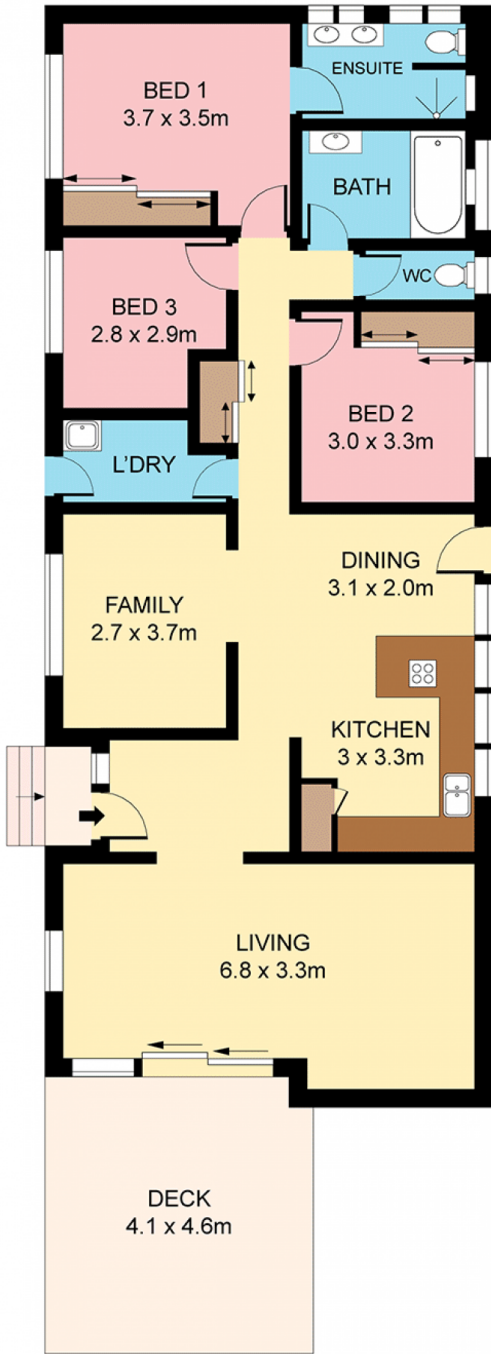
Customised for ease of every day family living, this stylishly renovated home showcases a clever single level floor plan with easy care attributes at its core and versatile spaces to accommodate a choice of needs. Enjoying an elevated setting with leafy district vistas, its central location is perfect to access fine schools, local shops and eateries, bus and rail.

- Large open plan living, casual dining
- Generous front deck, timber floors, air-con
- Modern kitchen with top end appliances
- Versatile TV room/4th bed, chic bathrooms
- Ensuite, alfresco terrace, carport, storeroom
- Additional carspace, Kirrawee High catchment

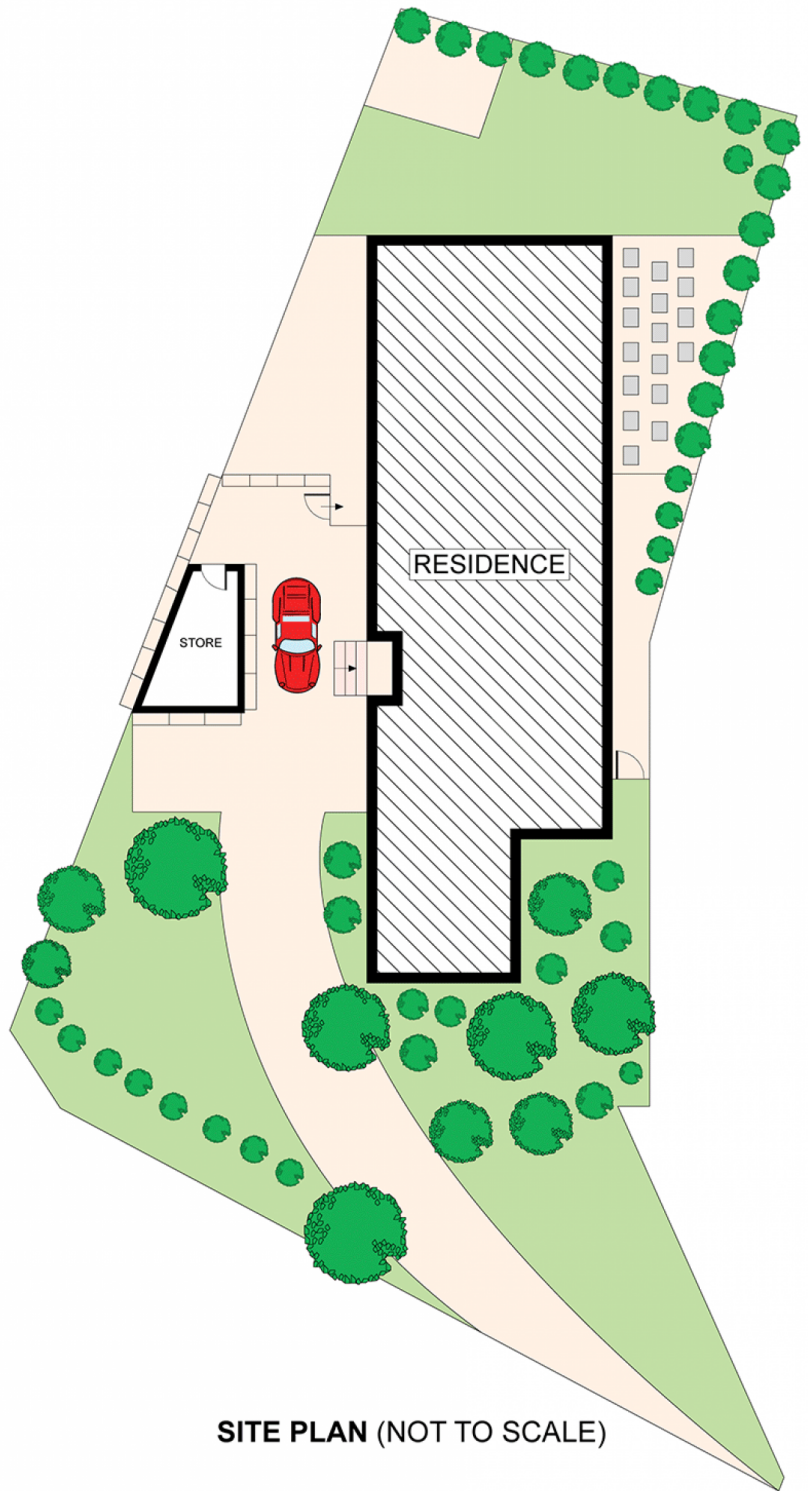
Land Size : 556 sqm
View : <https://www.jreproperty.com.au/sale/nsw/sutherland/gymea-bay/residential/house/7488473>



Luke Jeffree
02 9540 2222



GROUND FLOOR



SITE PLAN (NOT TO SCALE)



Plans shown are for presentation purposes only and are not part of any legal document or title. They are subject to errors, omissions, inaccuracies and should not be used as a sole and accurate reference. Interested parties should make their own inquiries using independent sources.