



12/39-45 Manchester Road GYMEA NSW

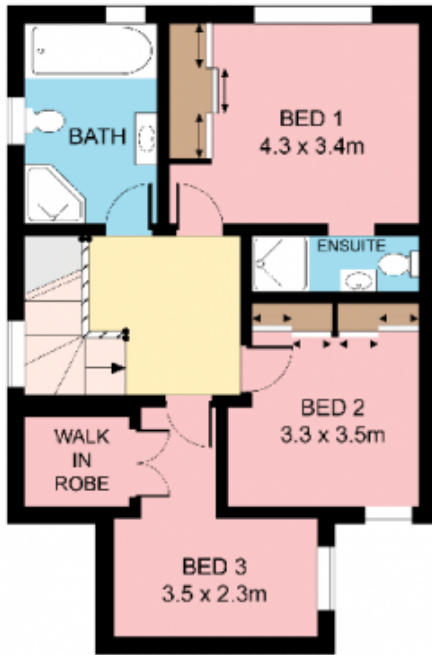
3 **2** **4**

Spacious light filled interiors, contemporary design and a first class location just steps to the rail and village combine to provide a relaxed living environment in this appealing boutique townhouse. One of just twelve in the attractive complex, it rests to the rear of the building enjoying a peaceful tranquillity and an abundance of space and storage.

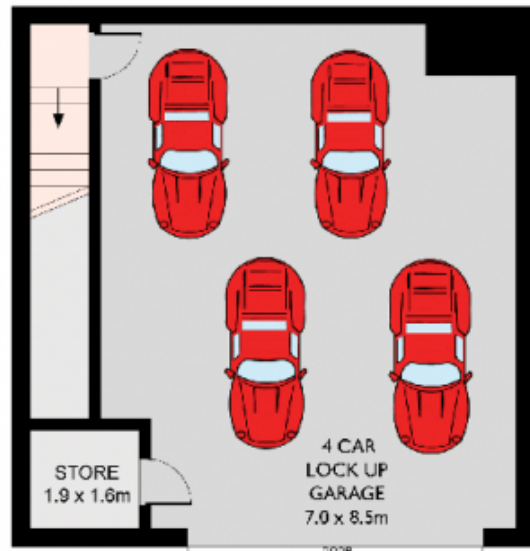
- Open plan living, dining and kitchen
- Caesarstone kitchen with gas cooktop, massive walk in pantry
- Wraparound courtyard terrace and gardens
- Plenty of storage, laundry with additional toilet
- Large bedrooms, BIRs, main with ensuite
- Vast 4 car garage with convenient internal entry

Type : Townhouse
Land Size : 288 sqm
View : <https://www.jreproperty.com.au/sale/nsw/sutherlandland/gymea/residential/townhouse/7488485>

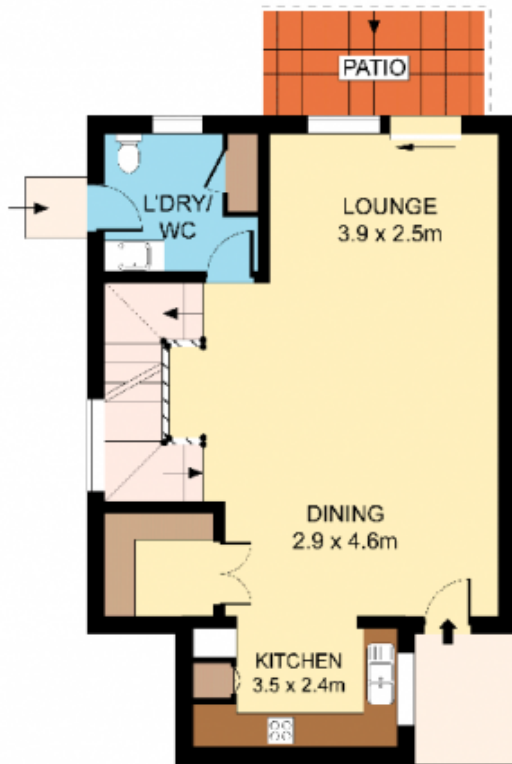
[For full version visit the website](https://www.jreproperty.com.au)



FIRST FLOOR



LOWER GROUND FLOOR



GROUND FLOOR



SITE PLAN
(NOT TO SCALE)



Plans shown are for present or proposed only and are not a part of any legal instrument or title. They are subject to errors, omissions, inaccuracies and should not be used as a sole and accurate reference. Interested parties should make their own enquiries using independent sources.

