



15 Greygum Place GYMEA BAY NSW

2 1 1

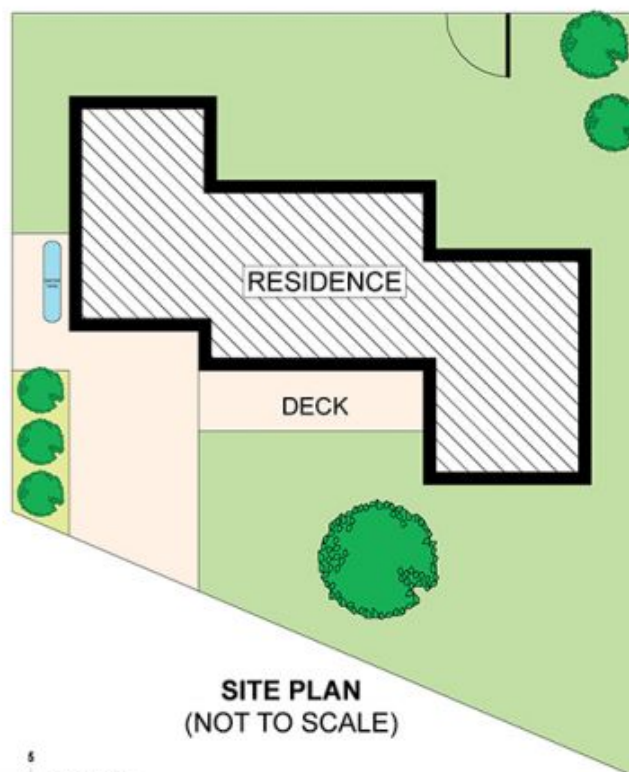
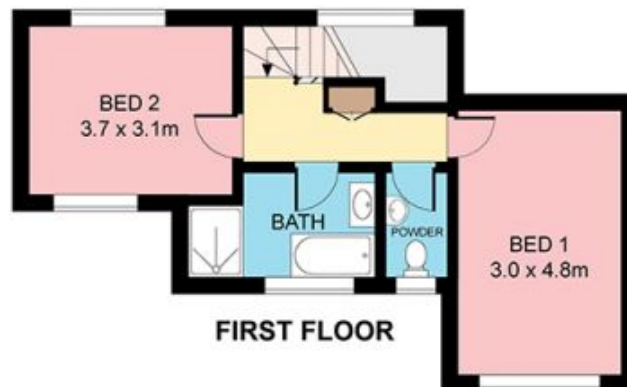
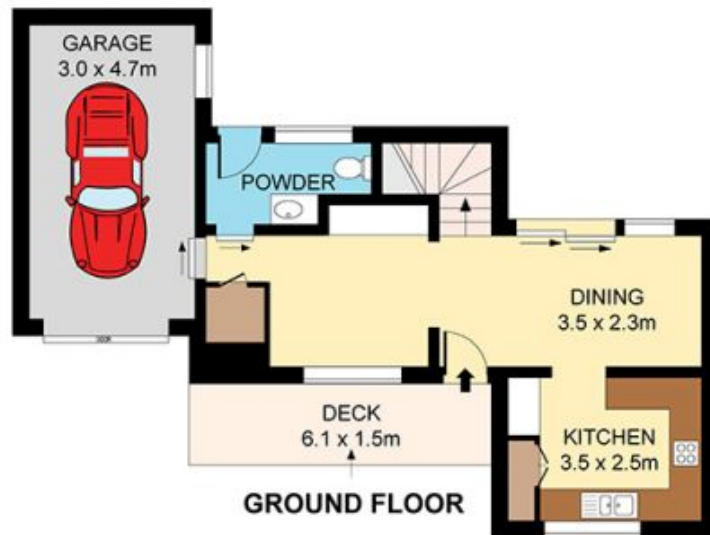
A contemporary offering, this stylish home will be very attractive to downsizers, executives looking to enjoy a prime location in a quiet cul-de-sac. Easy care and pristine throughout, its versatile design provides living options which cater to individual needs. Adding to its appeal, it sits within the Kirrawee High catchment.

- Striking tiled floors, shadowline ceilings
- Caesarstone kitchen with breakfast bar
- Family living and dining, N/E facing
- Powder room/laundry, private rear garden
- Two bedrooms on the upper level
- LUG, off street parking, storage

Type : Townhouse
Land Size : 197 sqm
View : <https://www.jreproperty.com.au/sale/nsw/sutherland/gymea-bay/residential/townhouse/7488492>



Luke Jeffree
02 9540 2222



Plans shown are for presentation purposes only and are not part of any legal document or title. They are subject to errors, omissions, inaccuracies and should not be used as a sole and accurate reference. Interested parties should make their own inquiries using independent sources.

15 GREYGUM PLACE

GYMEA BAY

