



10 Jean Avenue MIRANDA NSW

4 2 2

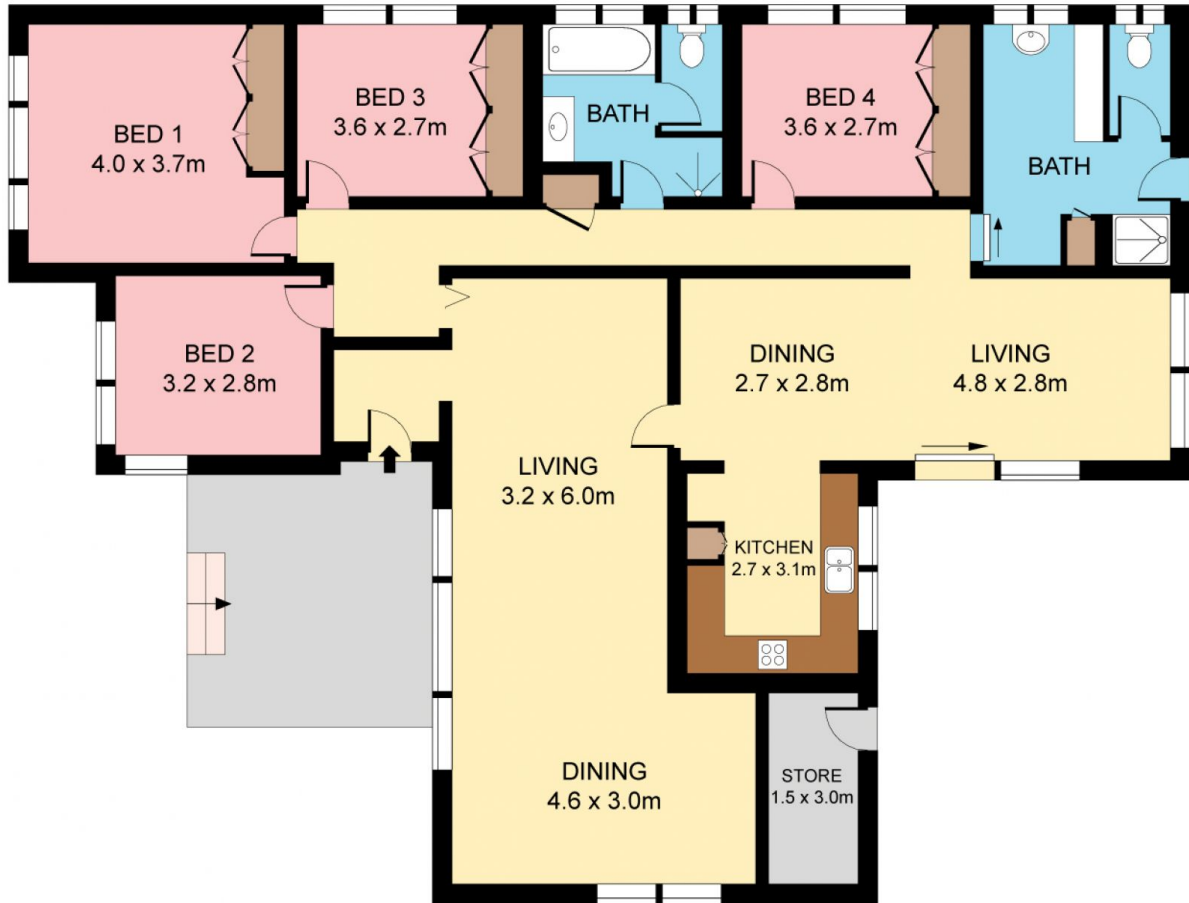
Enviably positioned in a quiet cul-de-sac within a heartbeat of Westfield Miranda and Gymea village, this welcoming family home offers easy care and single level living. Tightly held for 30 years, its beautifully maintained interiors feature a brand new kitchen, generous indoor and outdoor living spaces and the potential to add further value.

Type : House
Land Size : 556 sqm
View : <https://www.jreproperty.com.au/sale/nsw/sutherlandland/miranda/residential/house/7488498>

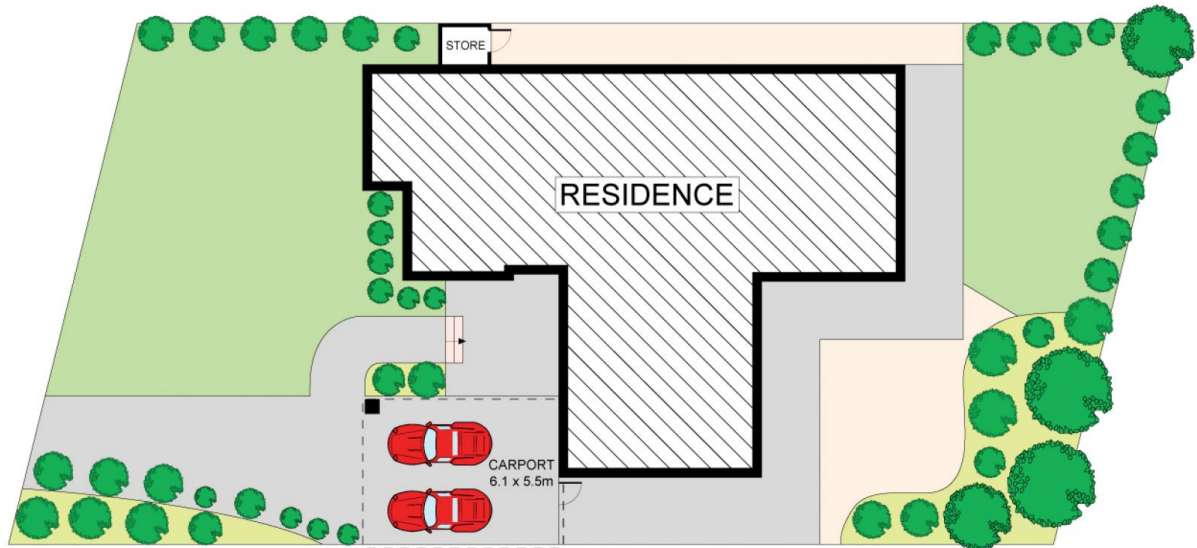
Solid brick construction, good natural light
 Versatile formal lounge and dining rooms
 Casual living & dining, large paved terrace
 Brand new kitchen with Bosch appliances
 Generous beds, storeroom, double carport
 Walk to schools, parks, shops, bus and rail



Dion Moon
02 9540 2222



GROUND FLOOR



SITE PLAN (NOT TO SCALE)



Plans shown are for presentation purposes only and are not part of any legal document or title. They are subject to errors, omissions, inaccuracies and should not be used as a sole and accurate reference. Interested parties should make their own inquiries using independent sources.