



37 Matong Place GYMEA BAY NSW

4 3 2

This sophisticated architecturally designed residence epitomises understated luxury and style, displaying an excellent floor plan and providing a wealth of living and entertaining options that easily caters to the needs of a growing family. Placed in one of GyMEA Bays best pockets, it sits within the Kirrawee high catchment a stroll to the baths, bay and parks.

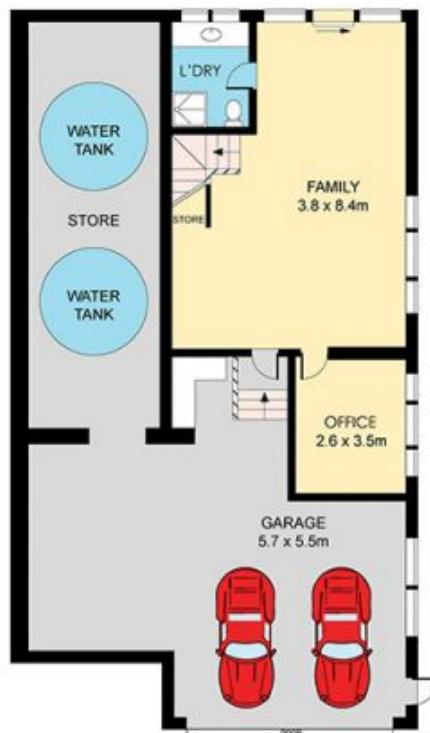
Type : House
Land Size : 689.2 sqm
View : <https://www.jreproperty.com.au/sale/nsw/sutherlandland/gymea-bay/residential/house/7488508>

Superbly stylish, timber floors, ducted air
Sweeping casual living & dining, large deck
High end stone kitchen, island dining bench
Separate lounge, over-sized beds, ensuite
Vast rumpus with study alcove and office
LUG, trailer/boat storage, child friendly yard
2 x 10,000 litre water tanks, service laundry, toilets

[For full version visit the website](https://www.jreproperty.com.au)



Luke Jeffree
02 9540 2222



SITE PLAN
(NOT TO SCALE)



Plans shown are for presentation purposes only and are not part of any legal document or title. They are subject to errors, omissions, inaccuracies and should not be used as a sole and accurate reference. Interested parties should make their own inquiries using independent sources.