



**5/351 President Avenue GYMEA NSW**

2 1 1

Focused on a spacious and ultra convenient lifestyle, this light filled and welcoming apartment enjoys a perfect setting at the back of the block with a sunny due north aspect. Neatly finished throughout and crafted for easy care living, its generous floor plan is impressive as is its quality boutique setting just an easy stroll to the village, rail and bus.

**Type** : Unit

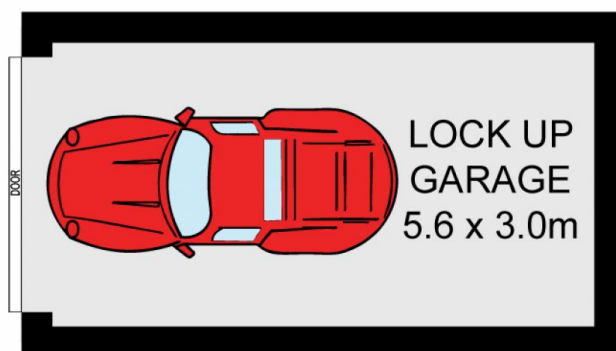
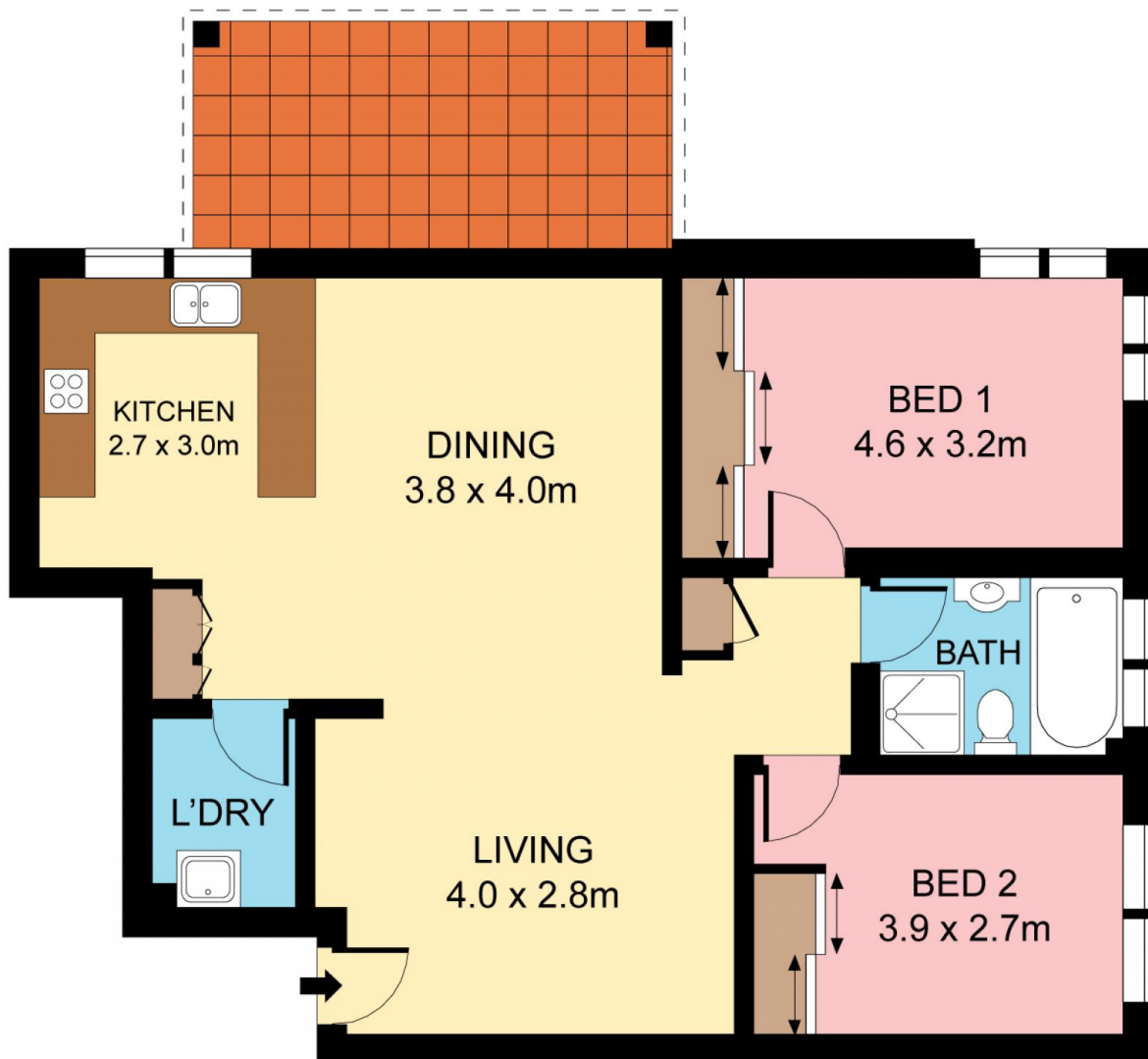
**View** : <https://www.jreproperty.com.au/sale/nsw/sutherland/gyMEA/residential/unit/7488511>



**Dion Moon**  
**02 9540 2222**

1st floor, tightly held modern security building  
Expansive open plan living and dining  
Large granite kitchen with breakfast bench  
Spacious and rear facing alfresco deck, a/c  
Generous beds, BIRS, refreshed bathroom  
Laundry, covered access to the secure car

[For full version visit the website](https://www.jreproperty.com.au)



Plans shown are for presentation purposes only and are not part of any legal document or title. They are subject to errors, omissions, inaccuracies and should not be used as a sole and accurate reference. Interested parties should make their own inquiries using independent sources.

5/351 PRESIDENT AVENUE

GYMEA