



**1/14-18 Koorabel Avenue GYMEA NSW**

3 1 2

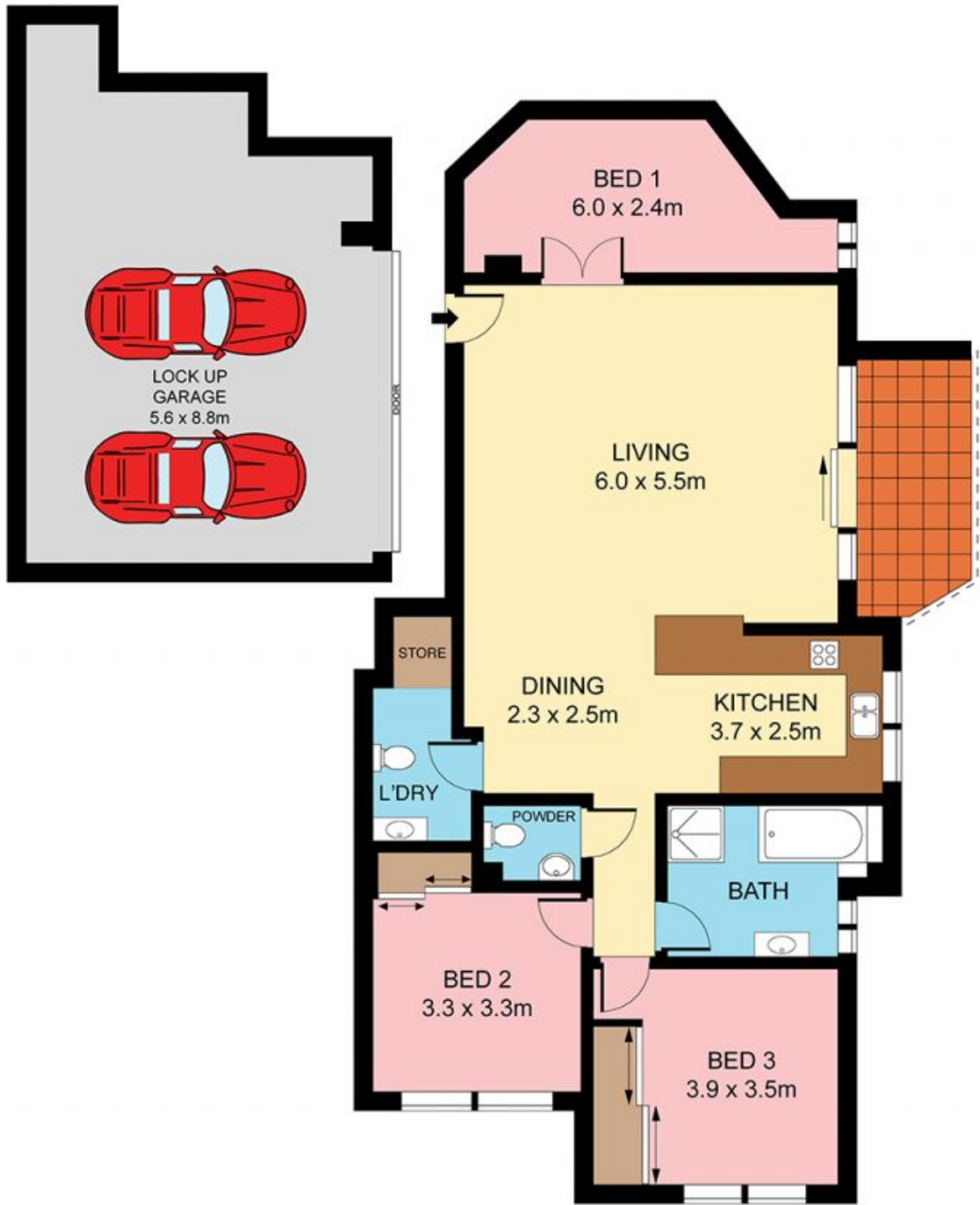
Remarkable in its proportions, this beautifully presented ground floor apartment provides villa like appeal ideal for those looking for an easy care lifestyle with an abundance of space. Resting in a modern security building, its lifestyle benefits are exceptional, offering peace and privacy just a quick stroll to the rail and Gymea village.

**Type** : Unit  
**Land Size** : 159 sqm  
**View** : <https://www.jreproperty.com.au/sale/nsw/sutherlandland/gymea/residential/unit/7488519>

Level entry, only one small common wall  
 Sweeping open plan living and dining areas  
 Large kitchen, quality European appliances  
 Alfresco terrace, flexible 3rd bed/living/study  
 Bright north facing beds with b/ins, two powder rooms  
 Laundry, DLUG with ample storage space



**Dion Moon**  
02 9540 2222



**GROUND FLOOR**



Plans shown are for presentation purposes only and are not part of any legal document or title. They are subject to errors, omissions, inaccuracies and should not be used as a sole and accurate reference. Interested parties should make their own inquiries using independent sources.

1/14-18 KOORABEL AVENUE

GYMEA