

293 Gymea Bay Road GYMEA BAY NSW

3 2 2

An enviable position and views across the leafy district surrounds brings a sense of escapism to this superb family home proudly resting on an exceptional north facing 834.7 sqm block. A labour of love over the years, it has been comprehensively extended adding spaces for the whole family to enjoy including the terraced landscaped grounds and pool. Close to Gymea Bay Baths and Reserve, also within meters to bus stop.

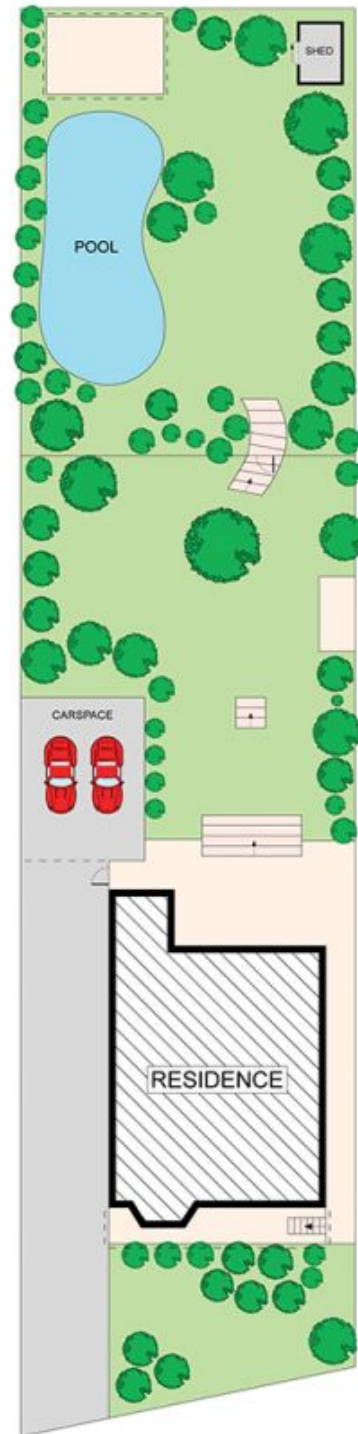
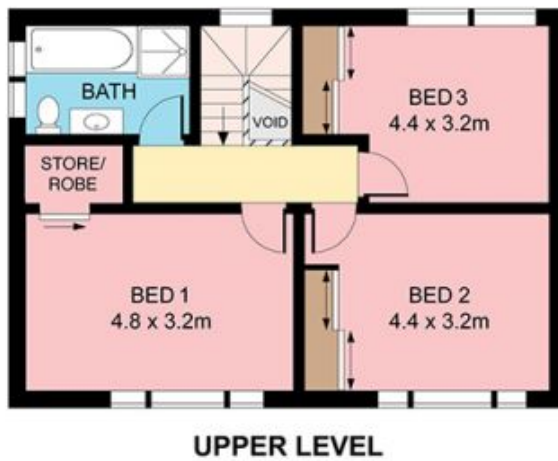
Type : House
Land Size : 834.7 sqm
View : <https://www.jreproperty.com.au/sale/nsw/sutherland/gymea-bay/residential/house/7488523>

Sunny formal lounge with adjoining wet bar
Formal dining, full length verandah, powder
Sweeping casual living and dining, fireplace
Large kitchen, air con, covered alfresco terrace
Poolside cabana, near new main bathroom
Double carport, Kirrawee High catchment



Luke Jeffree
02 9540 2222

[For full version visit the website](https://www.jreproperty.com.au)



Plans shown are for presentation purposes only and are not part of any legal document or title. They are subject to errors, omissions, inaccuracies and should not be used as a sole and accurate reference. Interested parties should make their own inquiries using independent sources.

293 GYMEA BAY ROAD

GYMEA BAY

