

**106 Auburn Street KIRRAWEE NSW**

6 2 1

Positioned in a superb no-through enclave bordering national park, this substantial home offers exceptional family flexibility and comfort with the potential for dual living and a resort-style feel with its wide alfresco deck and pool. Enjoying a leafy outlook and stylish updates its close to all amenities and within the Kirrawee High catchment.

**Land Size** : 648 sqm  
**View** : <https://www.jreproperty.com.au/sale/nsw/sutherlandland/kirrawee/residential/house/7488555>

Formal living areas, casual dining  
Alfresco deck, glass wrapped pool  
Stylish stone kitchen, five large beds  
New designer baths, large laundry  
Potential for upper and lower residence  
Lower level living, study, single garage

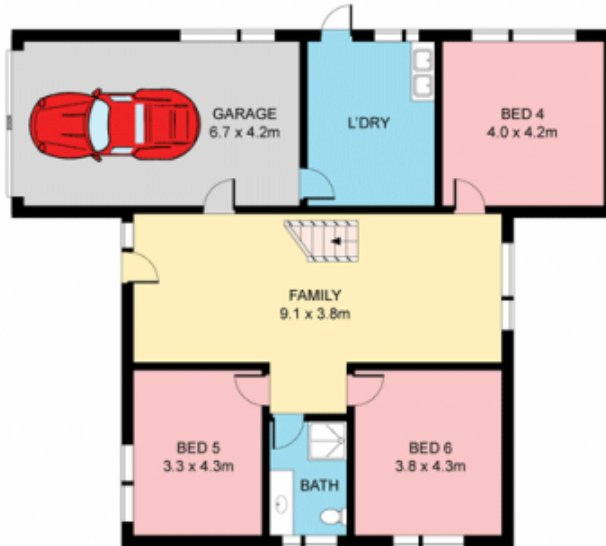
\* Council Rates - \$360.00 per quarter  
\* Water Rates - \$270.00 per quarter



**Dion Moon**  
**02 9540 2222**



GROUND FLOOR



LOWER GROUND FLOOR



SITE PLAN (NOT TO SCALE)



Plans shown are for presentation purposes only and are not part of any legal document or title. They are subject to errors, omissions, inaccuracies and should not be used as a sole and accurate reference. Interested parties should make their own inquiries using independent sources.

106 AUBURN STREET

KIRRAWEE

