



1/2A San Remo Avenue GYMEA NSW

3 1 1

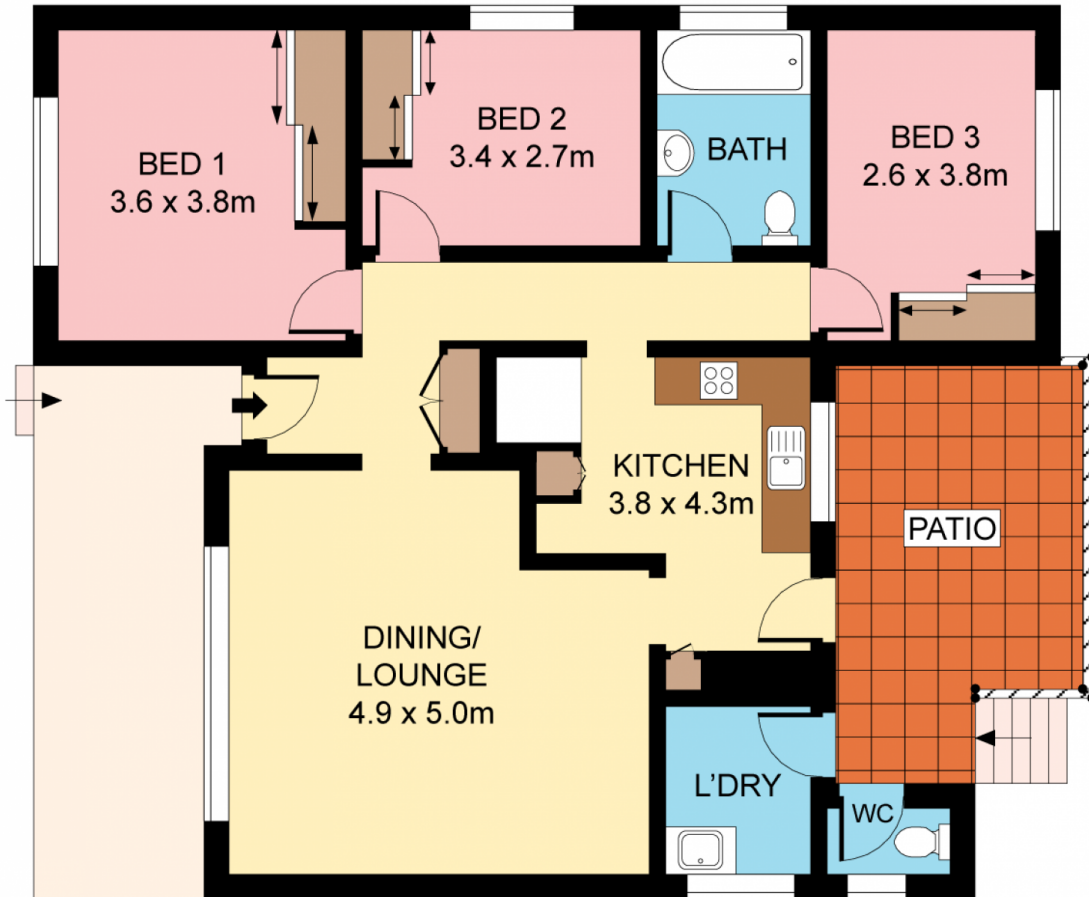
Resting at the end of a peaceful cul-de-sac and encircled by private gardens, this attractive family home is filled with warmth and charm presenting a ready-made lifestyle in the perfect setting. Offering easy care living at its best with a spacious single level design, it adjoins acres of sports fields and is an easy stroll to amenities.

Land Size : 419.8 sqm
View : <https://www.jreproperty.com.au/sale/nsw/sutherland/gyMEA/residential/house/7488559>

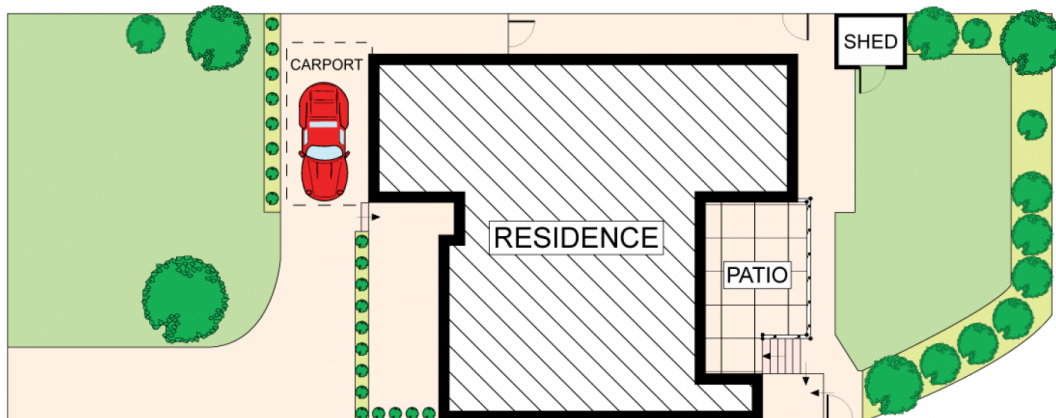
- Timber floors, bright uplifting interiors
- Generous combined living and dining
- Stylish open kitchen, breakfast nook
- Sunny alfresco deck, private lawn
- Built-in robes in all beds, powder room
- Carport, additional off street parking



Luke Jeffree
02 9540 2222



GROUND FLOOR



SITE PLAN (NOT TO SCALE)



Plans shown are for presentation purposes only and are not part of any legal document or title. They are subject to errors, omissions, inaccuracies and should not be used as a sole and accurate reference. Interested parties should make their own inquiries using independent sources.