



50 Rival Street KAREELA NSW

3 2 2

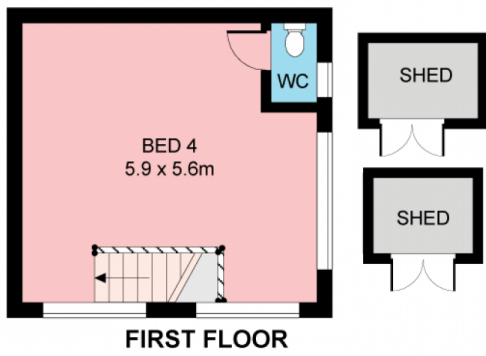
Presenting the complete family lifestyle package, this superbly renovated home delivers a spacious floor plan designed for luxury day to day living and entertaining. Providing a choice of living spaces and the option for a 4th bedroom, it sits in a peaceful pocket amongst designer gardens with a pool and poolside cabana.

Type : House
Land Size : 556 sqm
View : <https://www.jreproperty.com.au/sale/nsw/sutherland/kareela/residential/house/7488560>

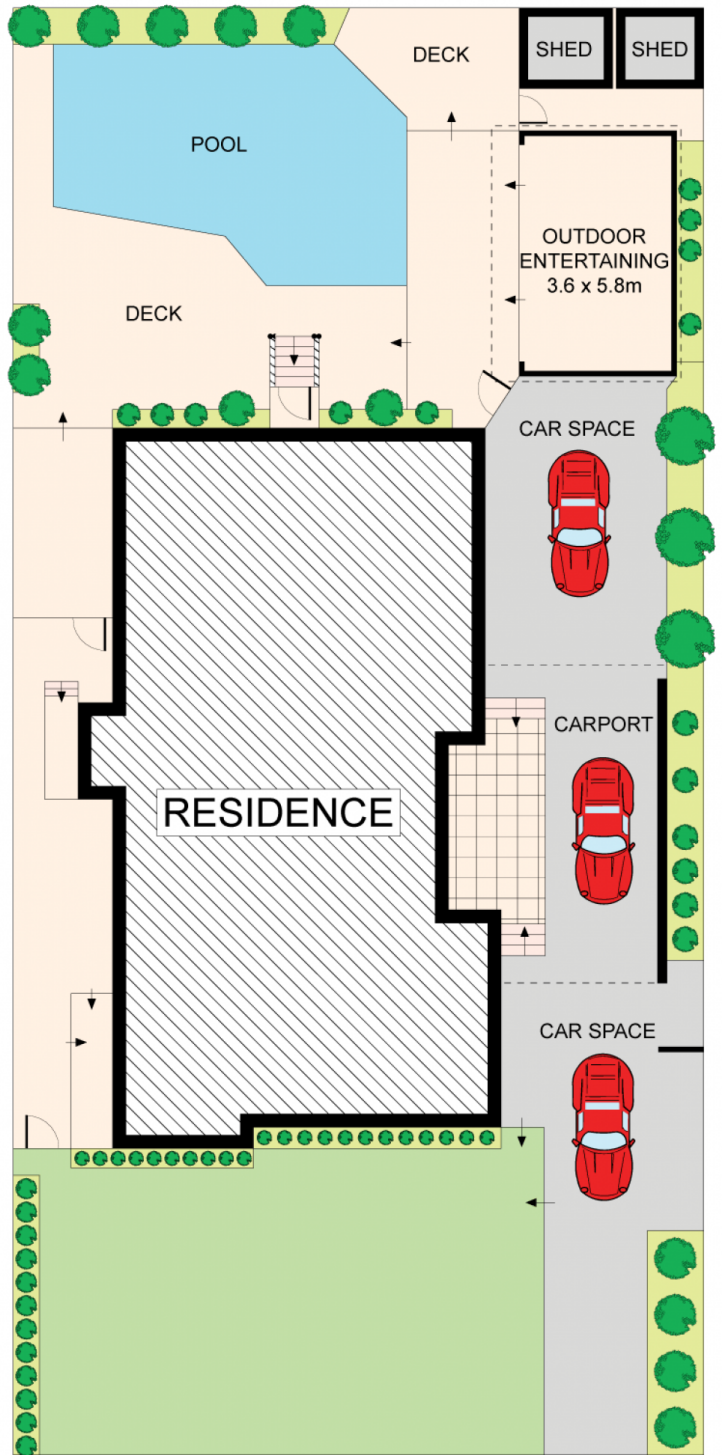
- Rendered exterior, contemporary appeal
- Spacious living & dining, reverse cycle air
- Stone wrapped designer kitchen, powder room
- Large family room/TV or fourth bedroom
- Poolside decks, large cabana with BBQ
- Ensuite, BIRs, walk to school and shops

*Council Rates - \$450.00 per quarter

[For full version visit the website](#)



GROUND FLOOR



SITE PLAN (NOT TO SCALE)



Plans shown are for presentation purposes only and are not part of any legal document or title. They are subject to errors, omissions, inaccuracies and should not be used as a sole and accurate reference. Interested parties should make their own inquiries using independent sources.

